

AV INDUSTRIES

manufacturers of architectural hardware

catalog 2026-27

avindustries.in



AV INDUSTRIES



**PRODUCT
CATALOGUE 2026-27**



AV INDUSTRIES

ABOUT AV INDUSTRIES

AV industries is a young, dynamic company offering architectural hardware solutions through a wide range of standard and customized products. Since the founding of the company in 2010 with five employees, we've grown into a team of 150 people under the visionary leadership of our Managing Director.

A solution-centric approach has enabled us to grow from scratch to become one of India's most famous architectural hardware solution providers. In addition, our focus on innovation & sourcing has helped us establish a state-of-the-art manufacturing facility that allows us to deliver at the client-specified time, quality, and pricing.



ABOUT MANAGEMENT

Late Sh. Ram Gera founded AV Industries in 2010 after a long career at many companies. His deep expertise in stainless steel trading and manufacturing helped pave the way to a good start for AV Industries



AV INDUSTRIES

**ABOUT
AV INDUSTRIES**

A DEDICATED SUPPLY CHAIN NETWORK BACKED BY ROBUST IT SYSTEMS ENABLES US TO SUPPLY PRODUCTS AND SERVICES ON TIME WITH PROPER AFTER-SALES SUPPORT. IN ADDITION, OUR MANUFACTURING FACILITIES OFFER MODERN CNC AND ROBOTIC MACHINES ALONG WITH AUTOMATIC FINISHING LINES ALLOWING US TO DELIVER HIGH QUALITY STAINLESS-STEEL PRODUCTS WITH AN EXCEPTIONAL FINISH.

We believe in "Make In India" to grow the team by raising the entire work ethic, empowering women, and providing the best facilities for employees. Our robust, cost-effective model puts us at the advantage of being a good employer for our people & and an ideal partner for our stakeholders.

OUR STRENGTH





AV INDUSTRIES

INFRASTRUCTURES



With our world-class manufacturing facilities in Delhi- NCR, we are able to produce quality architectural hardware products at the scale required by our clients. Our facilities come equipped with the latest machinery and automation imported from the leading vendors from all around the world. That, combined with a team of professionally trained engineers and technicians, helps us manufacture products that are outstanding in aesthetics and have a long life.



WE HAVE DESIGNED OUR MANUFACTURING FACILITIES WITH A FUTURE-LOOKING MINDSET AND HAVE INVESTED IN EQUIPMENT AND CAPABILITIES TO MEET GLOBAL STANDARDS AND DEMANDS





AV INDUSTRIES

**Quality
Assurance**



**OUR FOCUS ALWAYS
REMAINS ON**
DELIVERING VALUE BY DELIVERING
QUALITY. THE ADVANCED
**EQUIPMENT AND
TECHNICAL PROWESS
OF THE TEAM**
DRIVE OUR INNOVATION
AND HELP US
CONTINUE TO PROVIDE
PIONEER SOLUTIONS
TO OUR CLIENTS

Our facilities come equipped with the latest machinery and automation imported from the leading vendors from all around the world. That, combined with a team of professionally trained engineers and technicians, helps us manufacture products that are outstanding in aesthetics and have a long life.



AV INDUSTRIES

OUR RANGE OF PRODUCTS

FLOOR SPRING



SR-6001 B

SR-6001 G

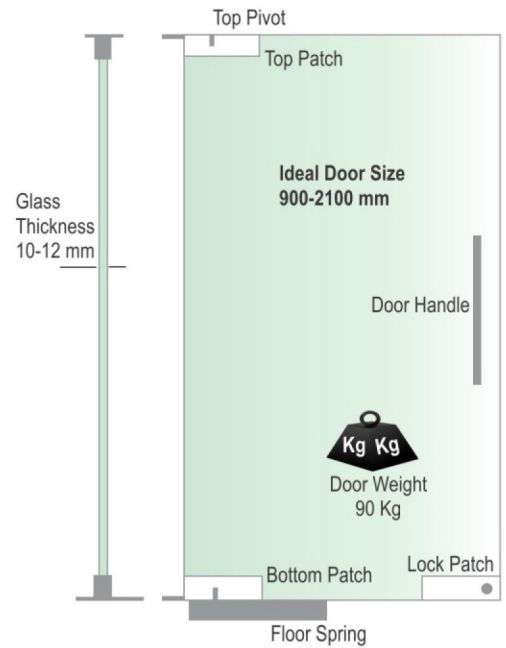
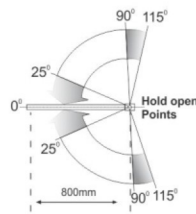
SR-6001 RG



SR-6001

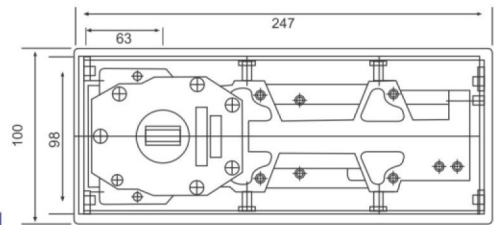
Single Spring Floor Hinge

General design, suitable for left or right hand to open the door in single and both sides.
 Used low temp. hydraulic oil for any climate operation and constant lubrication.
 Suitable for wooden, Aluminium and toughened glass doors.
 Suitable for door weight 90kgs.
 Closing force 25nm.
 Suitable for maximum wide door leaf (900x2100mm).
 Speed Covering Control- two Stage adjustable Speed.
 Opening angle 90° / 115°



PF-18

Top & Bottom Pivot
 Accessories for Wooden Door
**COMBO FULL SET ALSO
 AVAILABLE WITH TOP &
 BOTTOM PIVOT - GSR-6001**



SR-6000 B

SR-6000 G

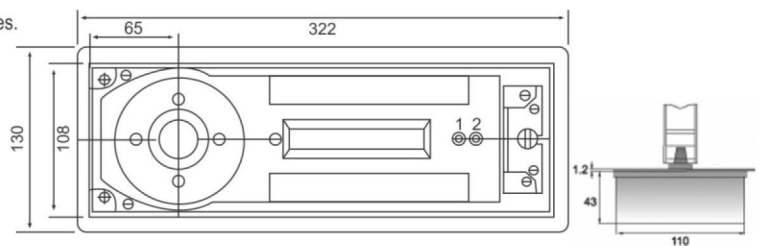
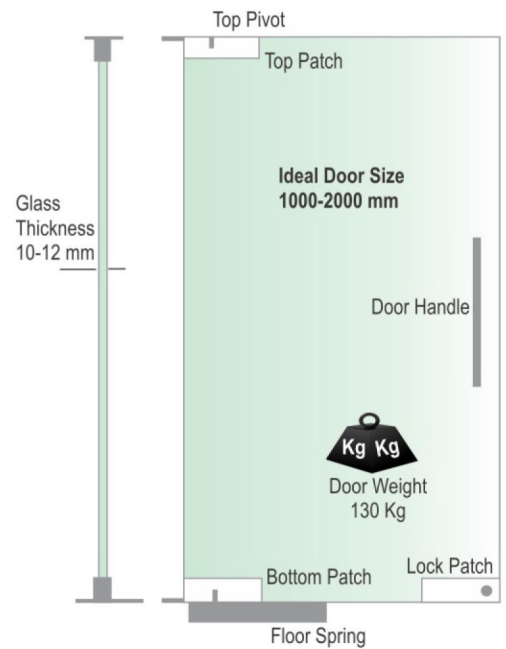
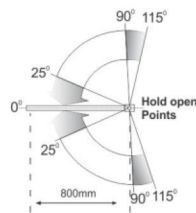
SR-6000 RG



SR-6000

Double Spring Floor Hinge

General design, suitable for left or right hand to open the door in single and both sides.
 Used low temp. hydraulic oil for any climate operation and constant lubrication.
 Suitable for wooden and toughened glass doors.
 Suitable for door weight 130kgs.
 Closing force 25nm.
 Suitable for maximum wide door leaf (1000x2000mm).
 Speed Covering Control- two Stage adjustable Speed.
 Opening angle 90° / 115°





FLOOR SPRING



SR-7500 B



SR-7500 G



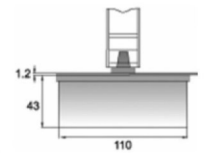
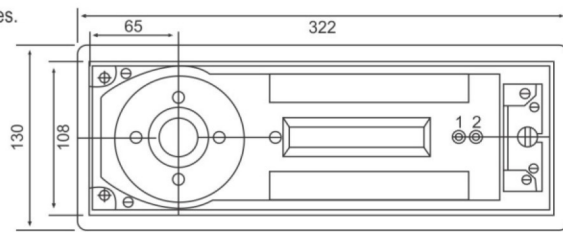
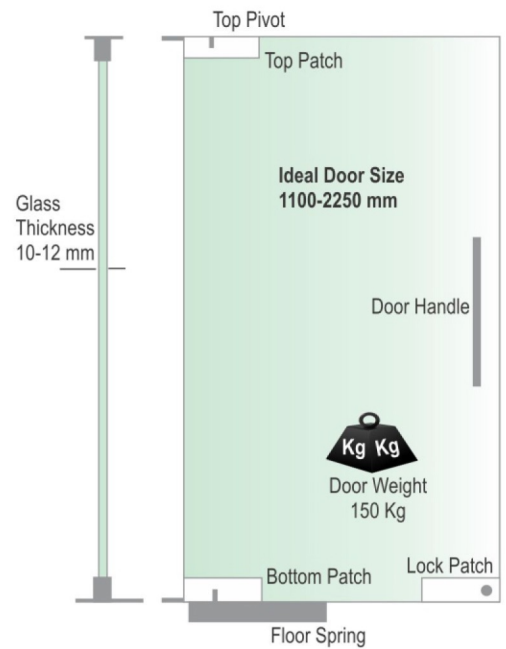
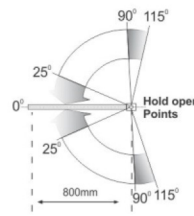
SR-7500 RG



SR-7500

Double Spring Floor Hinge

General design, suitable for left or right hand to open the door in single and both sides.
 Used low temp. hydraulic oil for any climate operation and constant lubrication.
 Suitable for wooden and toughened glass doors.
 Suitable for door weight 150kgs.
 Closing force 25nm.
 Suitable for maximum wide door leaf (1100x2250mm).
 Speed Covering Control- two Stage adjustable Speed.
 Opening angle 90° / 115°



SR-10500 B



SR-10500 G



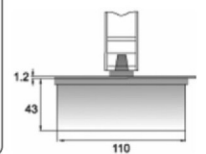
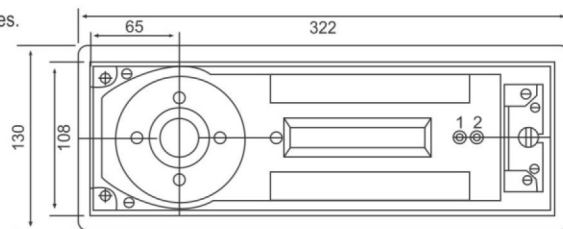
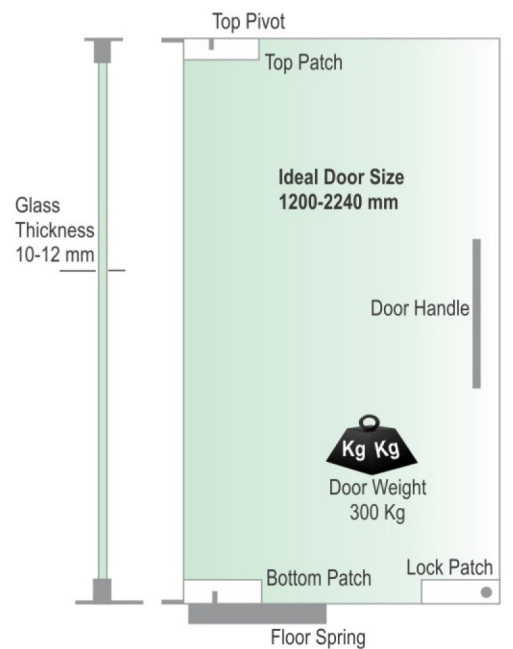
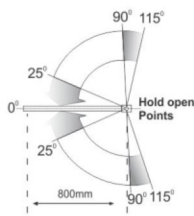
SR-10500 RG



SR-10500

Double Spring Floor Hinge

General design, suitable for left or right hand to open the door in single and both sides.
 Used low temp. hydraulic oil for any climate operation and constant lubrication.
 Suitable for wooden and toughened glass doors.
 Suitable for door weight 300kgs.
 Closing force 25nm.
 Suitable for maximum wide door leaf (1200x2400mm).
 Speed Covering Control- two Stage adjustable Speed.
 Opening angle 90° / 115°



COMBO PATCH SET



130Kg. FLOOR SPRING COMBO SET - SR-6000

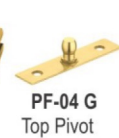
COMBO FULL SET - SR-6000



COMBO FULL SET WITH LOCK - SR-6000



COMBO FULL SET WITH LOCK & HANDLE - SR-6000





90 Kg. FLOOR SPRING COMBO SET - SR-6001

COMBO FULL SET - SR-6001



SR-6001
Single Spring Floor Hinge
Full Set



PF-01
Top Patch



PF-02
Bottom Patch



PF-04
Top Pivot



SR-6001 B
Single Spring Floor Hinge
Full Set



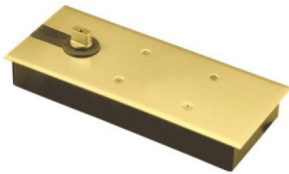
PF-01B
Top Patch



PF-02 B
Bottom Patch



PF-04 B
Top Pivot



SR-6001 G
Single Spring Floor Hinge
Full Set



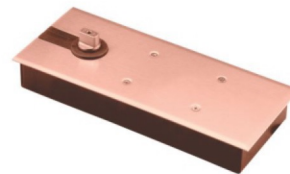
PF-01 G
Top Patch



PF-02 G
Bottom Patch



PF-04 G
Top Pivot



SR-6001 RG
Single Spring Floor Hinge
Full Set



PF-01 RG
Top Patch



PF-02 RG
Bottom Patch



PF-04 RG
Top Pivot

COMBO FULL SET WITH LOCK - SR-6001



SR-6001
Single Spring Floor Hinge
Full Set with Lock



PF-01
Top Patch



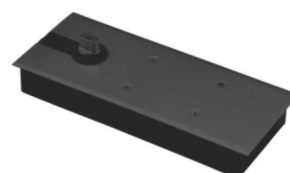
PF-02
Bottom Patch



PF-03
Lock Patch



PF-04
Top Pivot



SR-6001 B
Single Spring Floor Hinge
Full Set with Lock



PF-01 B
Top Patch



PF-02 B
Bottom Patch



PF-03 B
Lock Patch



PF-04 B
Top Pivot



SR-6001 G
Single Spring Floor Hinge
Full Set with Lock



PF-01G
Top Patch



PF-02 G
Bottom Patch



PF-03 G
Lock Patch



PF-04 G
Top Pivot



SR-6001 RG
Single Spring Floor Hinge
Full Set with Lock



PF-01 RG
Top Patch



PF-02 RG
Bottom Patch



PF-03 RG
Lock Patch



PF-04 RG
Top Pivot

COMBO FULL SET WITH LOCK & HANDLE - SR-6001



SR-6001
Single Spring Floor Hinge
Full Set with Lock & Handle



PF-01
Top Patch



PF-02
Bottom Patch



PF-03
Lock Patch



PF-04
Top Pivot



DH-01
Door Handle
25x300x400



SR-6001 B
Single Spring Floor Hinge
Full Set with Lock & Handle



PF-01 B
Top Patch



PF-02 B
Bottom Patch



PF-03 B
Lock Patch



PF-04 B
Top Pivot



DH-01 B
Door Handle
25x300x400



SR-6001 G
Single Spring Floor Hinge
Full Set with Lock & Handle



PF-01 G
Top Patch



PF-02 G
Bottom Patch



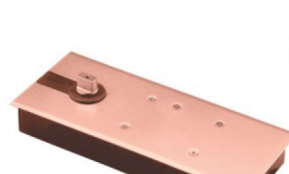
PF-03 G
Lock Patch



PF-04 G
Top Pivot



DH-01 G
Door Handle
25x300x400



SR-6001 RG
Single Spring Floor Hinge
Full Set with Lock & Handle



PF-01 RG
Top Patch



PF-02 RG
Bottom Patch



PF-03 RG
Lock Patch

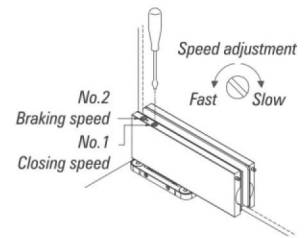
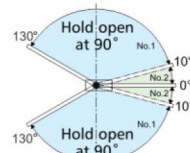


PF-04 RG
Top Pivot



DH-01 RG
Door Handle
25x300x400

HYDRAULIC PATCH FITTING



HSF-100 B



HSF-100 G



HSF-100 RG

Glass Thickness 8-12 mm

HFS-100 (German Quality)

Hydraulic Floor Spring

General design, suitable for left or right hand to open the door in single and both sides.

Suitable for toughened glass doors.

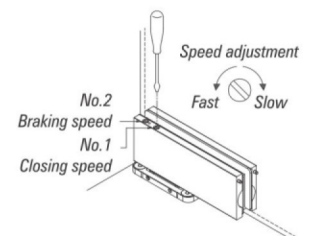
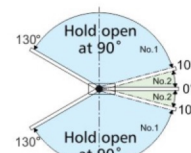
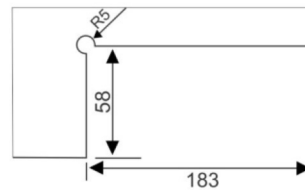
Suitable for door weight 80kgs.

Closing force 25nm.

Suitable for maximum wide door leaf (750x2100mm).

Speed Covering Control- two Stage adjustable Speed.

Opening angle 90° / 130°



HSF-101 B



HSF-101 G



HSF-101 RG

Glass Thickness 8-12 mm

HFS-101 (German Quality)

Hydraulic Floor Spring

General design, suitable for left or right hand to open the door in single and both sides.

Suitable for toughened glass doors.

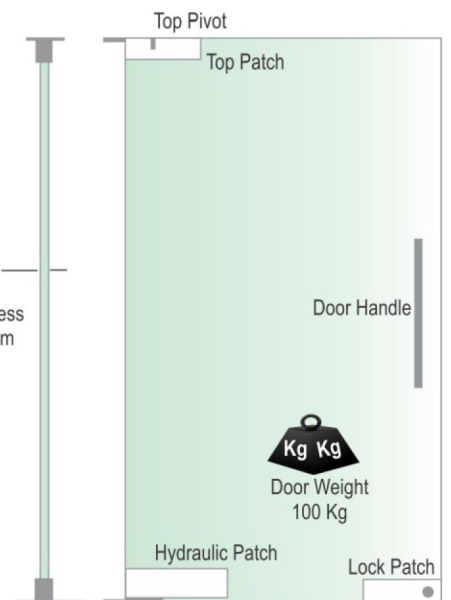
Suitable for door weight 100kgs.

Closing force 25nm.

Suitable for maximum wide door leaf (750x2100mm).

Speed Covering Control- two Stage adjustable Speed.

Opening angle 90° / 130°





HYDRAULIC PATCH FITTING SET

HYDRAULIC PATCH COMBO SET

COMBO FULL SET - HFS-100



HFS-100
Hydraulic Floor Spring
Full Set with Handle



PF-01
Top Patch



PF-04
Top Pivot



DH-01
Door Handle



HFS-100 B
Hydraulic Floor Spring
Full Set with Handle



PF-01 B
Top Patch



PF-04 B
Top Pivot



DH-01 B
Door Handle



HFS-100 G
Hydraulic Floor Spring
Full Set with Handle



PF-01 G
Top Patch



PF-04 G
Top Pivot



DH-01 G
Door Handle



HFS-100 RG
Hydraulic Floor Spring
Full Set with Handle



PF-01 RG
Top Patch



PF-04 RG
Top Pivot



DH-01 RG
Door Handle

COMBO FULL SET - HFS-101



HFS-101
Hydraulic Floor Spring
Full Set with Handle



PF-01
Top Patch



PF-04
Top Pivot



DH-01
Door Handle



HFS-101 B
Hydraulic Floor Spring
Full Set with Handle



PF-01 B
Top Patch



PF-04 B
Top Pivot



DH-01 B
Door Handle



HFS-101 G
Hydraulic Floor Spring
Full Set with Handle



PF-01 G
Top Patch



PF-04 G
Top Pivot



DH-01 G
Door Handle



HFS-101 RG
Hydraulic Floor Spring
Full Set with Handle



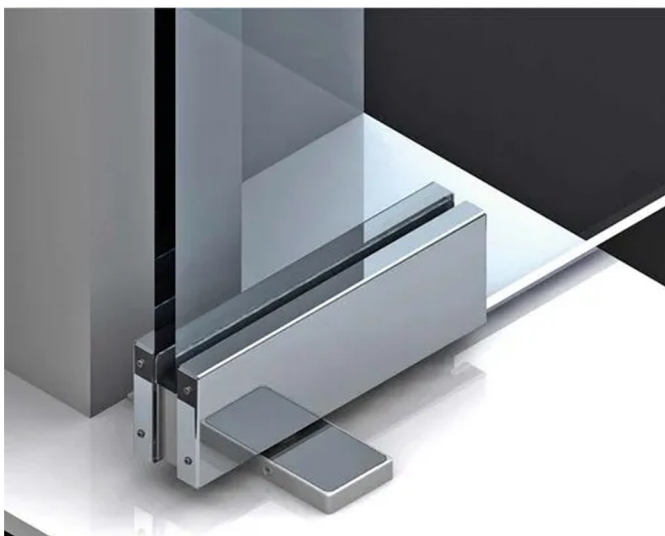
PF-01 RG
Top Patch



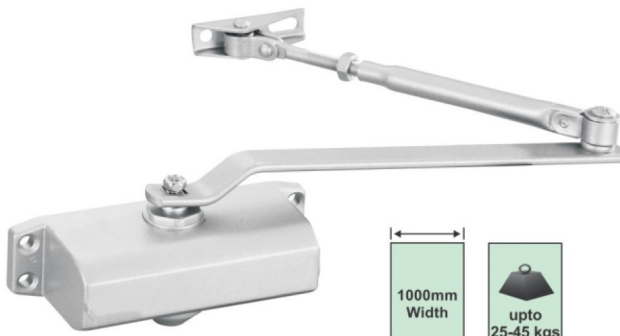
PF-04 RG
Top Pivot



DH-01 RG
Door Handle



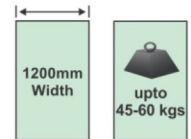
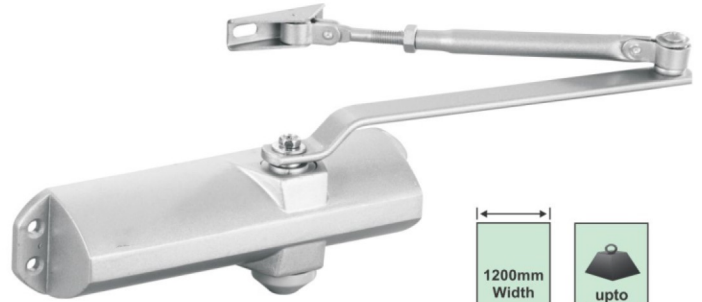
DOOR CLOSER



Door Size Door Weight

DC-100

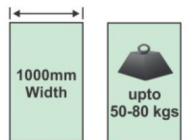
Adjustable Speed
Available in Silver, Golden & Brown Colours
Suitable for Either Metal Framed or Wooden Doors
Suitable for Doors Weighing upto 25-45 Kg.
or 1000mm in Width
Right Hand & Left Hand Opening Doors



Door Size Door Weight

DC-101

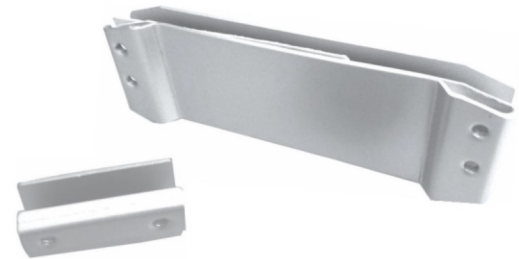
Adjustable Speed
Available in Silver, Golden & Brown Colours
Suitable for Either Metal Framed or Wooden Doors
Suitable for Doors Weighing upto 45-60 Kg.
or 1000mm in Width
Right Hand & Left Hand Opening Doors



Door Size Door Weight

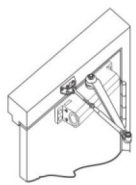
DC-102

Adjustable Speed
Available in Silver, Golden & Brown Colours
Suitable for Either Metal Framed or Wooden Doors
Suitable for Doors Weighing upto 50-80 Kg.
or 1000mm in Width
Right Hand & Left Hand Opening Doors



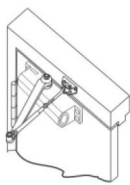
DC-103

Door Closer Holder for Glass Door



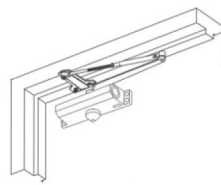
Regular Arm Installation

Left Hand Door - LH
Right Hand Reverse - RHR



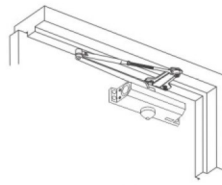
Regular Arm Installation

Right Hand Door - RH
Left Hand Reverse - LHR



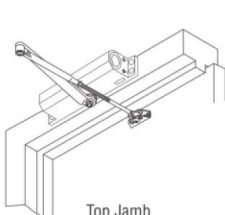
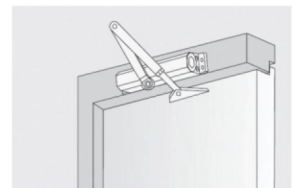
Parallel Arm Installation

Left Hand Door - LH
Right Hand Reverse - RHR



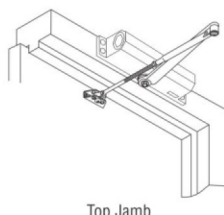
Parallel Arm Installation

Right Hand Door - RH
Left Hand Reverse - LHR



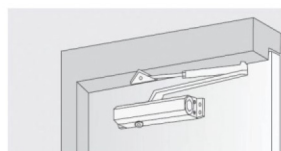
Top Jamb Installation

Left Hand Door - LH
Right Hand Reverse - RHR



Top Jamb Installation

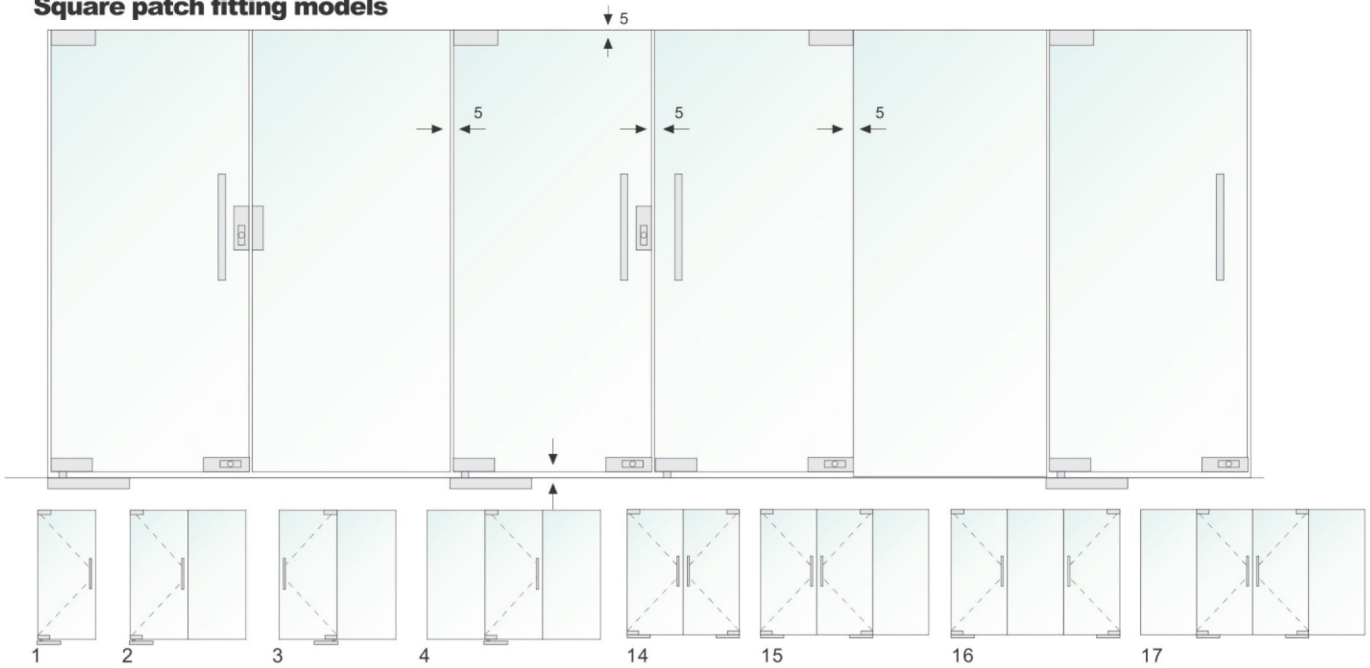
Right Hand Door - RH
Left Hand Reverse - LHR



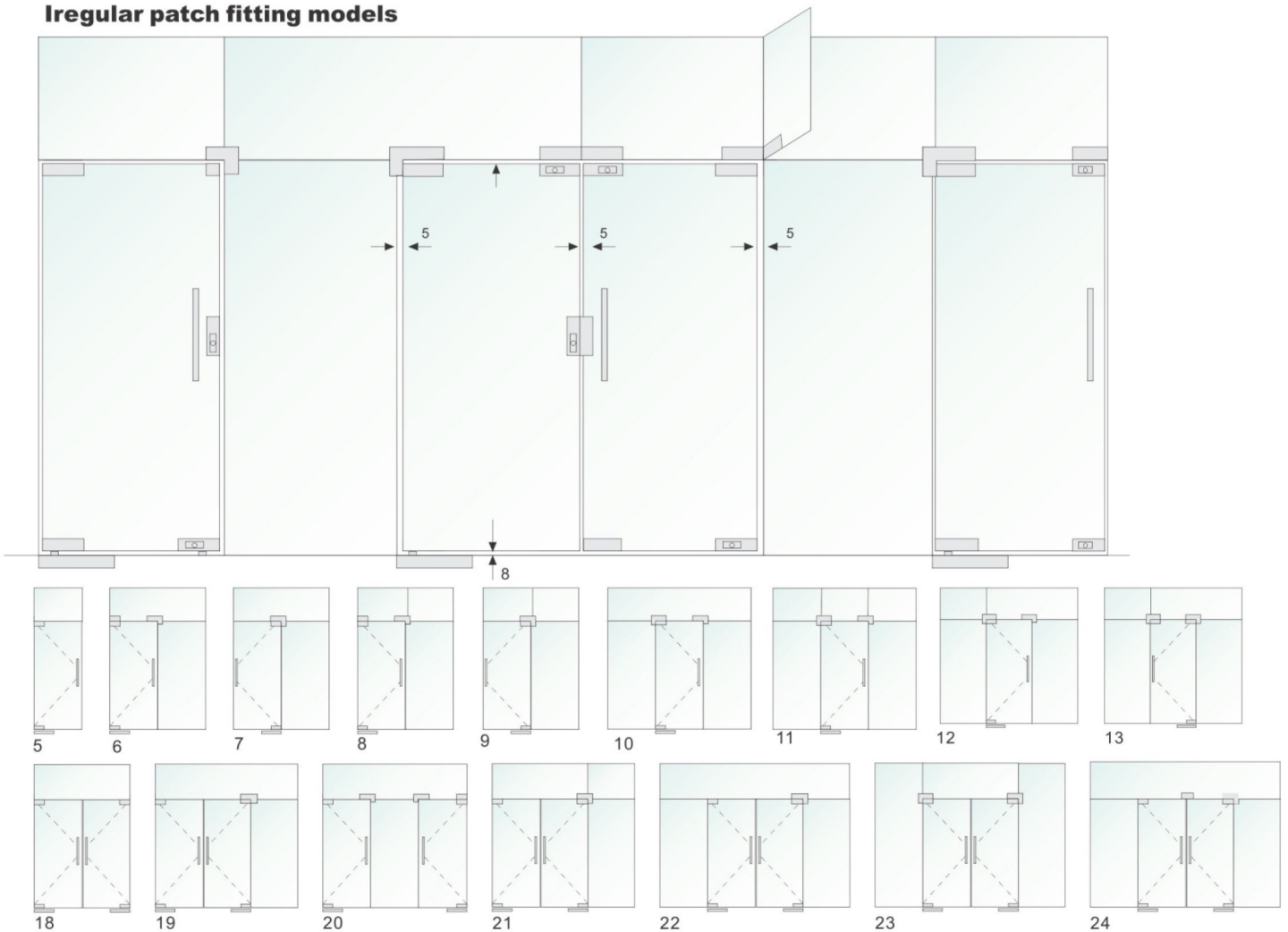
- > Select degree of opening from table and use template dimensions shown above, mark SIX (6) HOLES ON FRAME for closer and TOW (2) HOLES ON DOOR of arm shoe.
- > Drill pilot holes in door and frame for #14 all-purpose screws or drill and tap for 1/4-20 machine screws.
- > Install adjustable forearm/arm shoe assembly to door using screws provided.
- > Install main arm to top pinion shaft using screws provided.
- > Mount closer body on frame using screws provided.



Square patch fitting models



Irregular patch fitting models



Application

Standard models are adaptable to 12mm thickness glass, and also applicable to 8mm and 10mm glass.
 Door weight upto 80kg.
 Door width 1100mm.

Specification

Finish : Satin stainless steel.
 Suitable for connecting over panel & side panel.
 Pivot point of 55 / 65mm.
 With SS 304 cover of 1.2mm thickness.
 High quality tempered precision screws are used to ensure solid gripping.

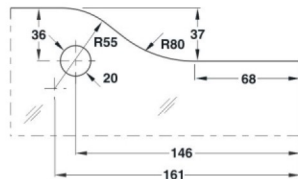
PATCH FITTING



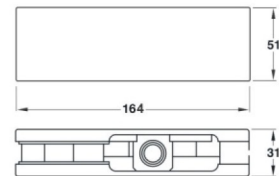
PF-01
Top Patch

Specification

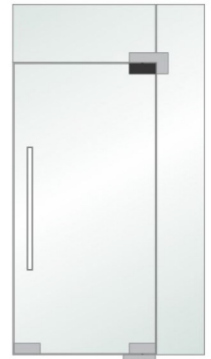
Finish : Satin stainless steel, Black Matt, Gold, Rose Gold
Pivot point of 55 / 65mm
With **SS 304** cover of 1 mm thickness
High quality tempered precision screws are used to ensure solid gripping



Cut Out Details



Side View



PF-01 B
Top Patch



PF-01 G
Top Patch



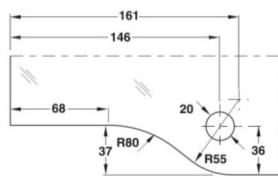
PF-01 RG
Top Patch



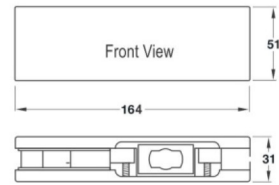
PF-02
Bottom Patch

Specification

Finish : Satin stainless steel, Black Matt, Gold, Rose Gold
With **SS 304** cover of 1 mm thickness
High quality tempered precision screws are used to ensure solid gripping



Cut Out Details



Side View



PF-02 B
Bottom Patch



PF-02 G
Bottom Patch



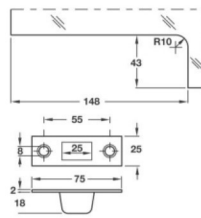
PF-02 RG
Bottom Patch



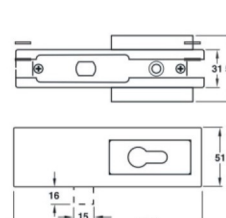
GPF-03
Lock Patch

Specification

Finish : Satin stainless steel Suitable to lock swing doors.
With a euro profile cylinder and strike plate
With 3 high Security computerized keys
Single Throw Rectangular Bolt with 15mm Projection
With **SS 304** cover of 1 mm thickness
High quality tempered precision screws are used to ensure solid gripping



Cut Out Details



Side View



PF-03 B
Lock Patch



PF-03 G
Lock Patch



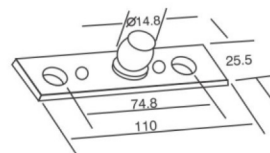
PF-03 RG
Lock Patch



PF-04
Top Pivot

Specification

Finish : Satin stainless steel
Wear Resistant Stainless Steel 304 Pivot Pin.
Top Pivot with 15mm dia pin.
Pivot held in Overhead Structure and used with Top Patch



PF-04 B
Top Pivot



PF-04 G
Top Pivot



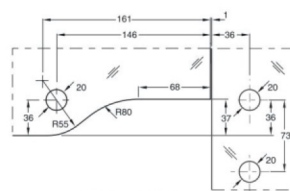
PF-04 RG
Top Pivot



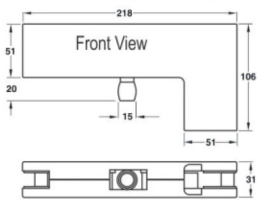
PF-05
Big L

Specification

Finish : Satin stainless steel
Suitable for connecting over panel & side panel
Pivot point of 55 / 65mm
With **SS 304** cover of 1 mm thickness
High quality tempered precision screws are used to ensure solid gripping



Cut Out Details



Side View



PF-05 B
Big L



PF-05 G
Big L



PF-05 RG
Big L



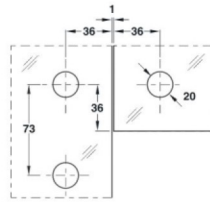
PATCH FITTING



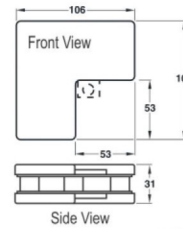
PF-06
Small L

Specification

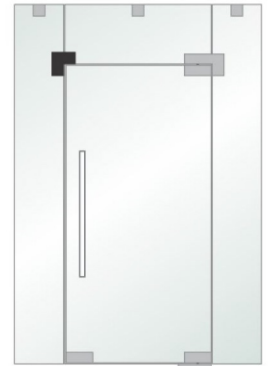
Finish : Satin stainless steel, Black Matt, Gold, Rose Gold
 Suitable for fixing over panel & side panel at the opening top corner of the door
 Corner small L Patch
 With **SS 304** cover of 1 mm thickness
 High quality tempered precision screws are used to ensure solid gripping



Cut Out Details



Side View



PF-06 B
Small L



PF-06 G
Small L



PF-06 RG
Small L

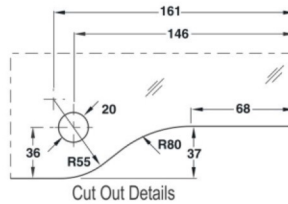


PF-07

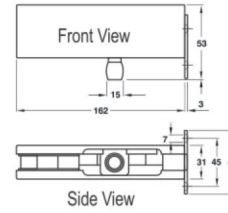
Over Panel Patch with Pivot

Specification

Finish : Satin stainless steel, Black Matt, Gold, Rose Gold
 Suitable to secure over panel with the wall by pivot pin of 15mm dia
 Pivot point of 55/65mm
 With **SS 304** cover of 1 mm thickness
 High quality tempered precision screws are used to ensure solid gripping



Cut Out Details



Side View



PF-07 B

Over Panel Patch with Pivot



PF-07 G

Over Panel Patch with Pivot



PF-07 RG

Over Panel Patch with Pivot

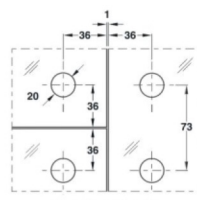


PF-08

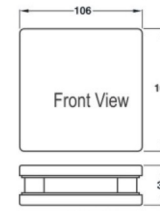
Square Patch

Specification

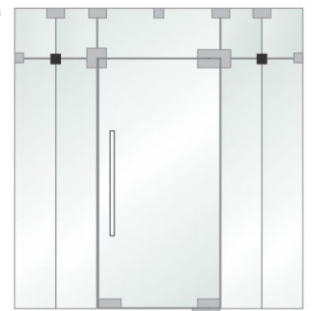
Finish : Satin stainless steel
 Suitable for fixing maximum four no's of fixed glass
 For fixing maximum up to four glasses
 With **SS 304** cover of 1 mm thickness
 High quality tempered precision screws are used to ensure solid gripping



Cut Out Details



Side View



PF-08 B
Lock Patch



PF-08 G
Lock Patch



PF-08 RG
Lock Patch

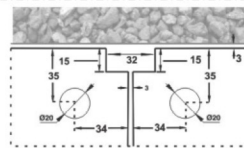


PF-09

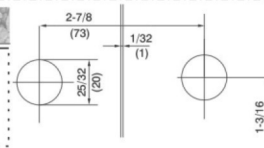
Connector for Double Glass

Specification

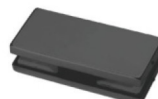
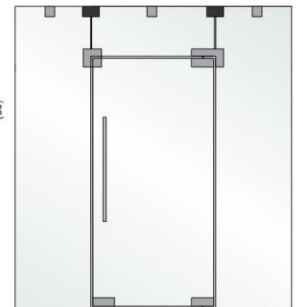
Finish : Satin stainless steel
 Suitable for fixing two glass together with ceiling, floor & wall
 With **SS 304** cover of 1 mm thickness
 High quality tempered precision screws are used to ensure solid gripping



Cut Out Details



Side View



PF-09 B

Connector for Double Glass



PF-09 G

Connector for Double Glass



PF-09 RG

Connector for Double Glass

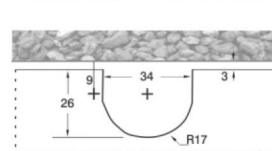


PF-10

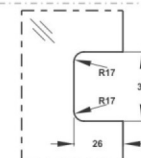
Square Connector

Specification

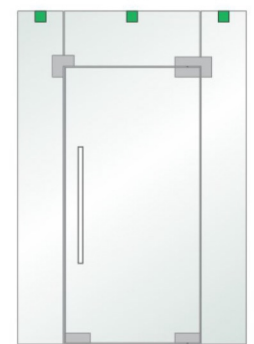
Finish : Satin stainless steel
 Suitable for fixing glass with ceiling & wall
 For fixing with fixed structure
 With **SS 304** cover of 1 mm thickness
 High quality tempered precision screws are used to ensure solid gripping



Cut Out Details



Side View



PF-10 B

Square Connector



PF-10 G

Square Connector



PF-10 RG

Square Connector

PATCH FITTING

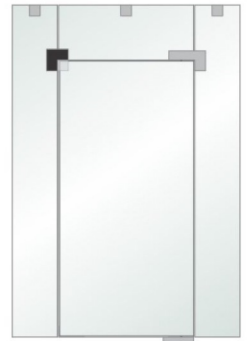
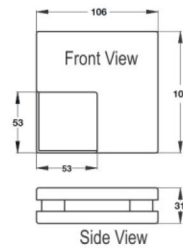
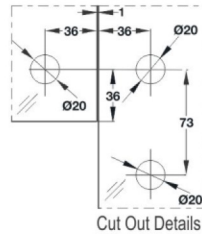


PF-11

Small L with Stopper

Specification

Finish : Satin stainless steel
 Suitable for fixing over panel & side panel at the opening top corner of the door
 also restricts one side opening of the door
 Square look from one side & L shape from another side
 With **SS 304** cover of 1 mm thickness
 Cover fixed with Allen screw to ensure that the cover remained secure in its place

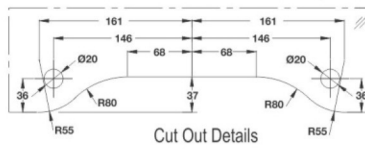
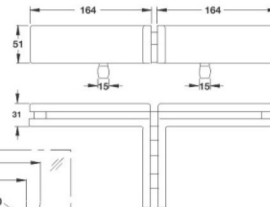
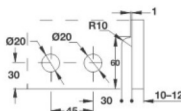


PF-12

Over Panel Patch with Fin

Specification

Finish : Satin stainless steel
 Suitable for back to back doors with pivot along with fin
 Over panel with pivot for back to back doors
 With **SS 304** cover of 1 mm thickness
 High quality tempered precision screws are used to ensure solid gripping

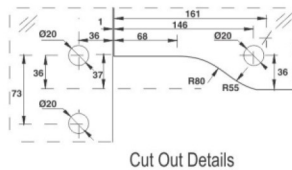
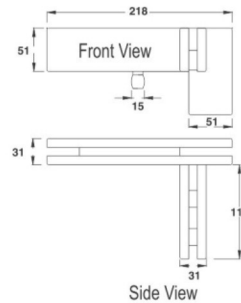
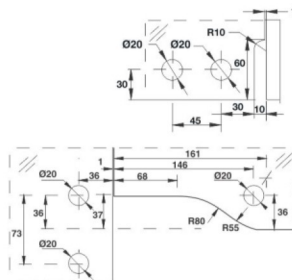


PF-13R

Big L with Fin

Specification

Finish : Satin stainless steel
 Suitable for fixing over panel & side panel along with fin
 Over panel side panel with fin inside
 With **SS 304** cover of 1 mm thickness
 High quality tempered precision screws are used to ensure solid gripping

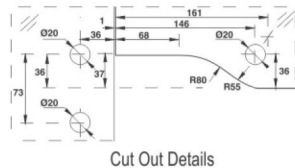
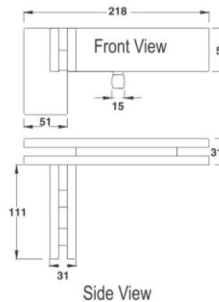
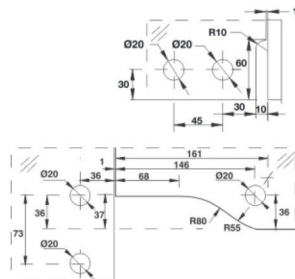


PF-14L

Big L with Fin

Specification

Finish : Satin stainless steel
 Suitable for fixing over panel & side panel along with fin
 Over panel side panel with fin inside
 With **SS 304** cover of 1 mm thickness
 High quality tempered precision screws are used to ensure solid gripping

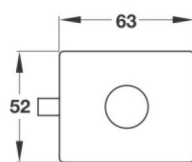
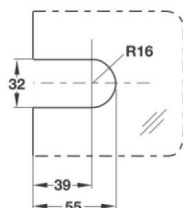


PF-15

Latch Lock

Specification

Finish : Satin stainless steel (SSS)
 Suitable to lock swing sliding & sliding doors.
 Can also be use to lock the door from center/top
 Thumb turn lock with single throw
 With **SS 304** cover of 1 mm thickness
 High quality tempered precision screws are used to ensure solid gripping

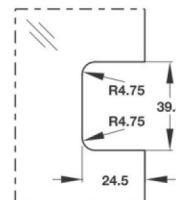


PF-20

Strike Box

Specification

Finish : Satin stainless steel
 Suitable for fixing glass with ceiling, floor & wall
 For fixing with fixed structure
 With **SS 304** cover of 1 mm thickness
 High quality tempered precision screws are used to ensure solid gripping





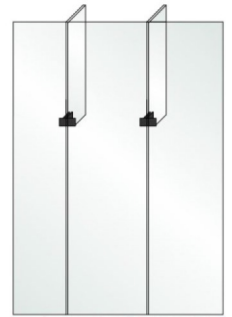
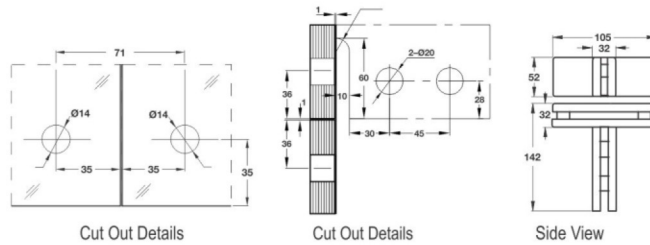
PATCH FITTING



PF-16
Connector with Fin

Specification

Finish : Satin stainless steel
 Suitable for fixing two fixed glasses in line with fin inside.
 For fixing two glasses in line with fin inside
 With **SS 304** cover of 1 mm thickness
 High quality tempered precision screws are used to ensure solid gripping



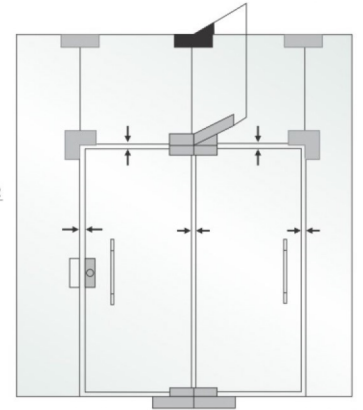
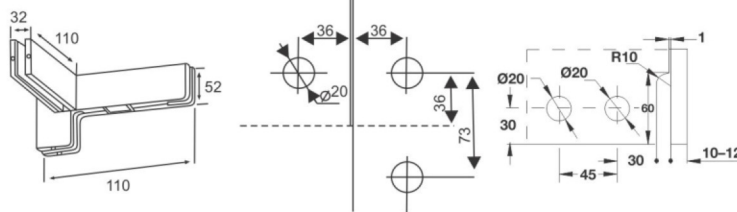
View from outside with Fin on the inside



PF-17
Small L with Fin (Left/Right)

Specification

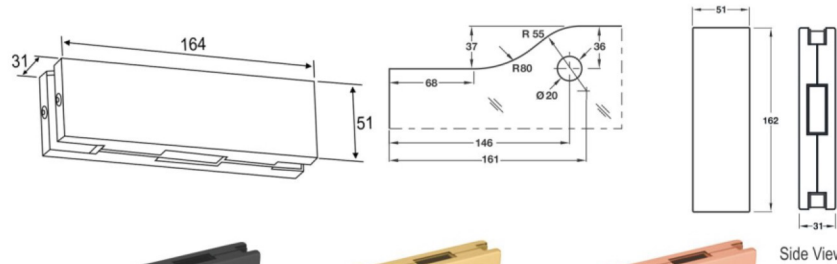
Finish : Satin stainless steel
 Suitable for fixing over panel & side along with fin to be used at the opening top corner of the door.
 L / R shape from outside with fin inside
 With **SS 304** cover of 1 mm thickness
 High quality tempered precision screws are used to ensure solid gripping



PF-19
Center Lock Strike Box

Specification

Finish : Satin stainless steel
 Suitable to Lock double doors.
 Strike box for **GPF-03**
 With **SS 304** cover of 1 mm thickness
 High quality tempered precision screws are used to ensure solid gripping



PF-19 B
Center Lock Strike Box



PF-19 G
Center Lock Strike Box



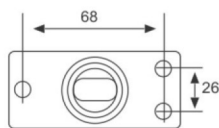
PF-19 RG
Center Lock Strike Box



PF-21
Mini Floor Hinge

Specification

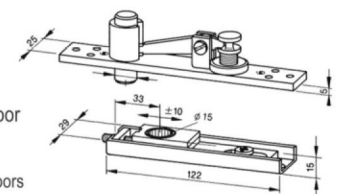
Finish : Satin stainless steel
 Load capacity 120kg
 Can be used for Small Doors with Bottom Patch



PF-18
Top & Bottom Pivot
Accessories for Wooden Door

Specification

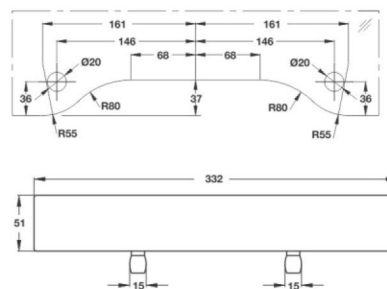
Finish : Satin stainless steel
 Suitable for wooden & aluminium doors
 Top pivot with 15 mm dia pin
 Wear resistant stainless steel 304 pivot pin



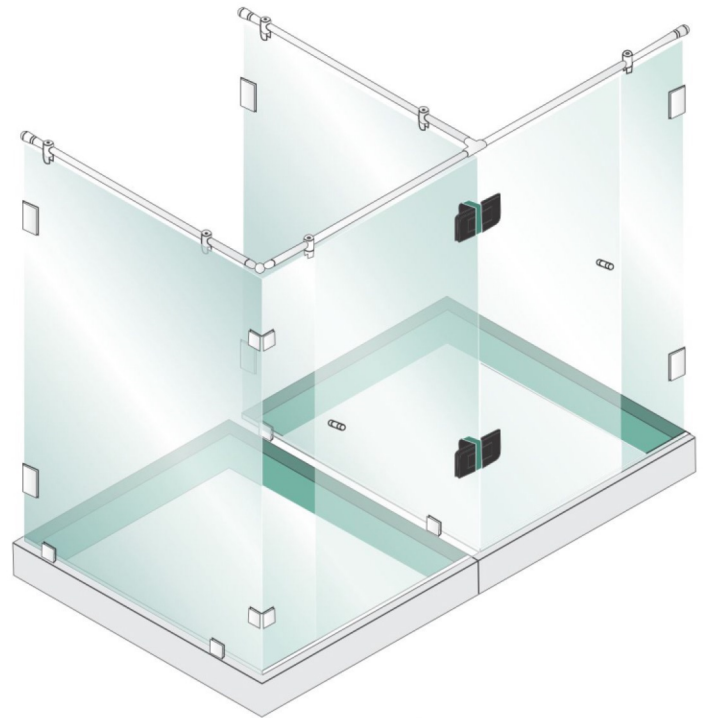
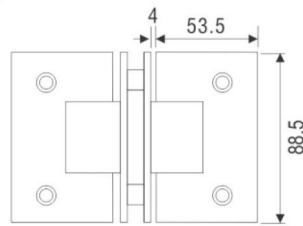
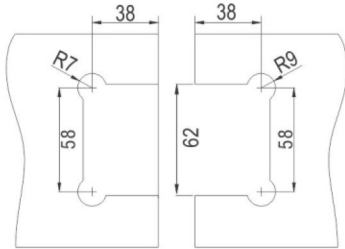
PF-22
Over Panel Side Panel
Patch Connector

Specification

Finish : Satin stainless steel
 Suitable for fixing over panel & side along with fin to be used at the opening top corner of the door.
 L shape from outside with fin inside
 With **SS 304** cover of 1 mm thickness
 High quality tempered precision screws are used to ensure solid gripping



SHOWER HINGES



SH-11AA (SS 304)

Double Glass Hinge Joint for 2 Fixed Glass
(T Connector)

Specification

Self closing function for both doors when stays at 30° approx.
Material : Solid Brass
Door Thickness : 8mm-12mm
Weight Capacity : 45kg
Finish : SatinNikle & Chrome Plated
With Gasket to Prevent Glass From Damage
Secure Holding with Glass



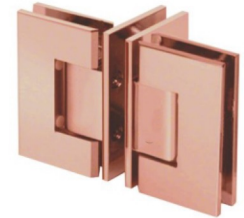
SH-11AA B (SS 304)

Double Glass Hinge Joint for 2 Fixed Glass
(T Connector)



SH-11AA G (SS 304)

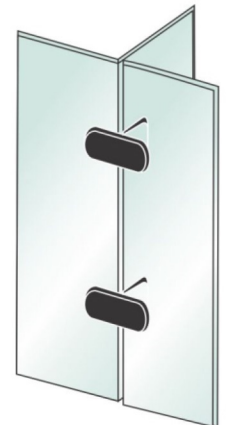
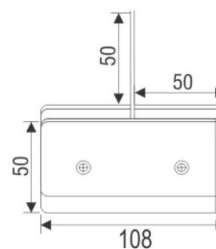
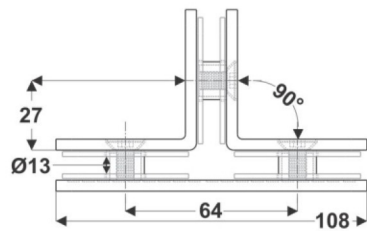
Double Glass Hinge Joint for 2 Fixed Glass
(T Connector)



SH-11AA RG (SS 304)

Double Glass Hinge Joint for 2 Fixed Glass
(T Connector)

GLASS CONNECTOR



GC-01 AA

Three Way Connector
(T Connector)

Specification

Material : Stainless steel 304 grade
Door Thickness : 8mm-12mm
Finish : Matt & Chrome Plated
With Gasket to Prevent Glass From Damage
Glass to Glass 90° three way connector
Suitable for holding 3 glasses together



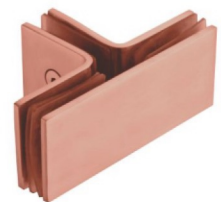
GC-01 AA B

Three Way Connector
(T Connector)



GC-01 AA G

Three Way Connector
(T Connector)



GC-01 AA RG

Three Way Connector
(T Connector)



SHOWER HINGES

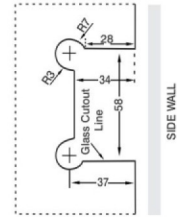
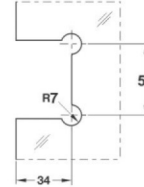
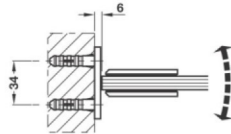
Thickness 4mm

- Material : **Stainless Steel 304 Grade** • Glass Thickness : 8mm-12mm • Weight Cap. : 45kg
- Finish : **Matt & Chrome Plated** • With Gasket to Prevent Glass From Damage • Secure Holding with Glass



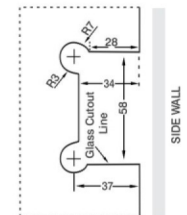
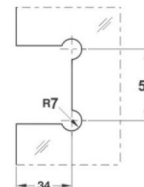
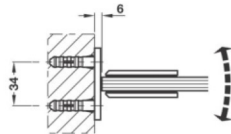
SH-1 H/P
Wall to Glass 90° Offset Hinge

Specification
Material : SS 304
Glass Thickness : 8mm-12mm
Weight Cap. : 45kg
Finish : Matt & Chrome Plated
With Gasket to Prevent Glass From Damage
Secure Holding with Glass



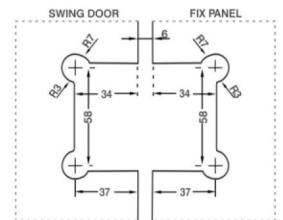
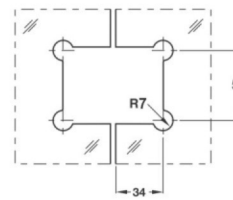
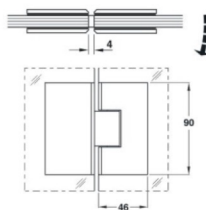
SH-1
Wall to Glass 90° Hinge

Specification
Material : SS 304
Glass Thickness : 8mm-12mm
Weight Cap. : 45kg
Finish : Matt & Chrome Plated
With Gasket to Prevent Glass From Damage
Secure Holding with Glass



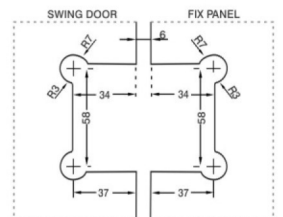
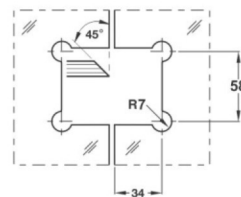
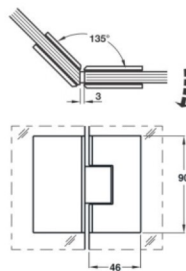
SH-2
Glass to Glass 180° Hinge

Specification
Material : SS 304
Glass Thickness : 8mm-12mm
Weight Cap. : 45kg
Finish : Matt & Chrome Plated
With Gasket to Prevent Glass From Damage
Secure Holding with Glass



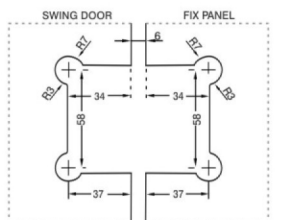
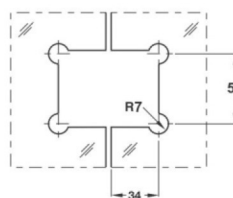
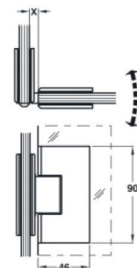
SH-3
Glass to Glass 135° Hinge

Specification
Material : SS 304
Glass Thickness : 8mm-12mm
Weight Cap. : 45kg
Finish : Matt & Chrome Plated
With Gasket to Prevent Glass From Damage
Secure Holding with Glass



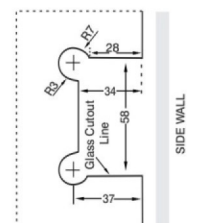
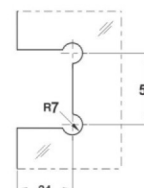
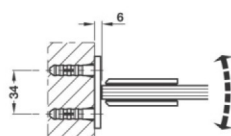
SH-4
Glass to Glass 90° Hinge

Specification
Material : SS 304
Glass Thickness : 8mm-12mm
Weight Cap. : 45kg
Finish : Matt & Chrome Plated
With Gasket to Prevent Glass From Damage
Secure Holding with Glass



SH-5
Wall to Glass 90° Fix Bracket

Specification
Material : SS 304
Glass Thickness : 8mm-12mm
Weight Cap. : 45kg
Finish : Matt & Chrome Plated
With Gasket to Prevent Glass From Damage
Secure Holding with Glass



SHOWER HINGES



• Material : **Stainless Steel 304 Grade** • Glass Thickness : 8mm-12mm
 • Weight Cap. : 45kg • Finish : Matt • With Gasket to Prevent Glass From Damage • Secure Holding with Glass



SH-11 H/P
Wall to Glass 90° Offset Hinge

Specification
 Material : **SS 304**
 Glass Thickness : 8mm-12mm
 Weight Cap. : 45kg
 Finish : Matt & Chrome Plated
 With Gasket to Prevent Glass From Damage
 Secure Holding with Glass



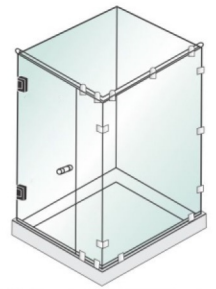
SH-11 H/P B
Wall to Glass 90° Offset Hinge



SH-11 H/P G
Wall to Glass 90° Offset Hinge



SH-11 H/P RG
Wall to Glass 90° Offset Hinge




SH-11
Wall to Glass 90° Hinge

Specification
 Material : **SS 304**
 Glass Thickness : 8mm-12mm
 Weight Cap. : 45kg
 Finish : Matt & Chrome Plated
 With Gasket to Prevent Glass From Damage
 Secure Holding with Glass



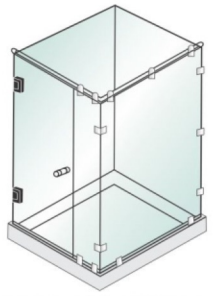
SH-11 B
Wall to Glass 90° Hinge



SH-11 G
Wall to Glass 90° Hinge



SH-11 RG
Wall to Glass 90° Hinge




SH-12
Glass to Glass 180° Hinge

Specification
 Material : **SS 304**
 Glass Thickness : 8mm-12mm
 Weight Cap. : 45kg
 Finish : Matt & Chrome Plated
 With Gasket to Prevent Glass From Damage
 Secure Holding with Glass



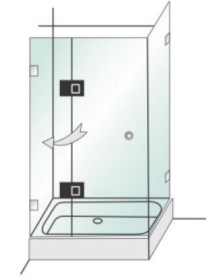
SH-12 B
Glass to Glass 180° Hinge



SH-12 G
Glass to Glass 180° Hinge



SH-12 RG
Glass to Glass 180° Hinge




SH-13
Glass to Glass 135° Hinge

Specification
 Material : **SS 304**
 Glass Thickness : 8mm-12mm
 Weight Cap. : 45kg
 Finish : Matt & Chrome Plated
 With Gasket to Prevent Glass From Damage
 Secure Holding with Glass



SH-13 B
Glass to Glass 135° Hinge



SH-13 G
Glass to Glass 135° Hinge



SH-13 RG
Glass to Glass 135° Hinge




SH-14
Glass to Glass 90° Hinge

Specification
 Material : **SS 304**
 Glass Thickness : 8mm-12mm
 Weight Cap. : 45kg
 Finish : Matt & Chrome Plated
 With Gasket to Prevent Glass From Damage
 Secure Holding with Glass



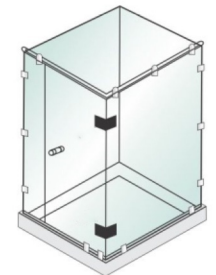
SH-14 B
Glass to Glass 90° Hinge



SH-14 G
Glass to Glass 90° Hinge



SH-14 RG
Glass to Glass 90° Hinge




SH-15
Wall to Glass 90° Fix Bracket

Specification
 Material : **SS 304**
 Glass Thickness : 8mm-12mm
 Weight Cap. : 45kg
 Finish : Matt & Chrome Plated
 With Gasket to Prevent Glass From Damage
 Secure Holding with Glass



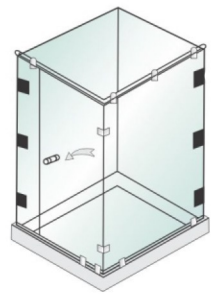
SH-15 B
Wall to Glass 90° Fix Bracket



SH-15 G
Wall to Glass 90° Fix Bracket



SH-15 RG
Wall to Glass 90° Fix Bracket





GLASS CONNECTORS

3 mm SSS 304

- Material : Stainless Steel • Glass Thickness : 8mm-12mm
- Finish : Satin Stainless Steel / CP • With Gasket to Prevent Glass From Damage • Secure Holding with Glass



GC-01A
U Connector (Single Hole)

Material : SS 304 -3mm
Door Thickness : 8mm-12mm
Finish : Matt & Chrome Plated



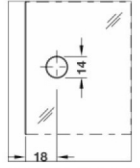
GC-01A B
U Connector (Single Hole)



GC-01A G
U Connector (Single Hole)



GC-01A RG
U Connector (Single Hole)



GC-01
U Connector

Material : SS 304 -3mm
Door Thickness : 8mm-12mm
Finish : Matt & Chrome Plated



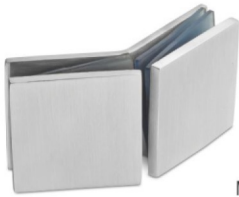
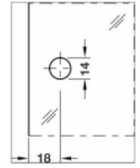
GC-01 B
U Connector



GC-01 G
U Connector



GC-01 RG
U Connector



GC-02
Glass to Glass 135°

Material : SS 304 -3mm
Door Thickness : 8mm-12mm
Finish : Matt & Chrome Plated



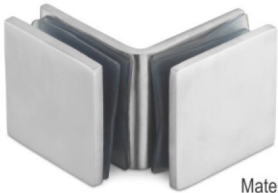
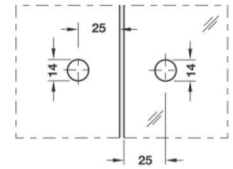
GC-02 B
Glass to Glass 135°



GC-02 G
Glass to Glass 135°



GC-02 RG
Glass to Glass 135°

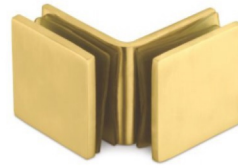


GC-03
Glass to Glass 90°

Material : SS 304 -3mm
Door Thickness : 8mm-12mm
Finish : Matt & Chrome Plated



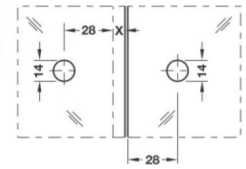
GC-03 B
Glass to Glass 90°



GC-03 G
Glass to Glass 90°



GC-03 RG
Glass to Glass 90°



GC-04
L Connector

Material : SS 304 -3mm
Door Thickness : 8mm-12mm
Finish : Matt & Chrome Plated



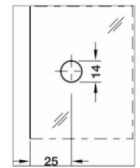
GC-04 B
L Connector



GC-04 G
L Connector



GC-04 RG
L Connector



GC-05
Glass to Glass 180°

Material : SS 304 -3mm
Door Thickness : 8mm-12mm
Finish : Matt & Chrome Plated



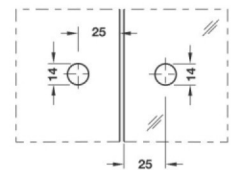
GC-05 B
Glass to Glass 180°



GC-05 G
Glass to Glass 180°



GC-05 RG
Glass to Glass 180°



GC-06
Wall to Glass 180°

Material : SS 304 -3mm
Door Thickness : 8mm-12mm
Finish : Matt & Chrome Plated



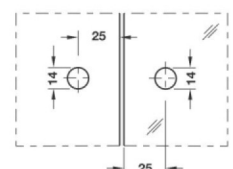
GC-06 B
Wall to Glass 180°



GC-06 G
Wall to Glass 180°



GC-06 RG
Wall to Glass 180°



GLASS CONNECTORS



4 mm Solid SS 304 (Casted)

• Material : Stainless Steel • Glass Thickness : 8mm-12mm
 • Finish : Satin Stainless Steel / CP • With Gasket to Prevent Glass From Damage • Secure Holding with Glass



GC-11A
U Connector (Single Hole)

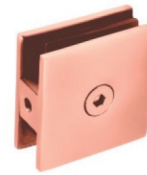
Material : SS 304 -4mm
Door Thickness : 8mm-12mm
Finish : Matt & Chrome Plated



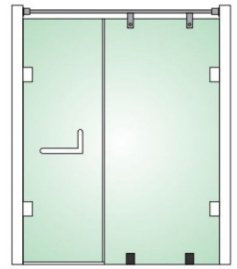
GC-11A B
U Connector (Single Hole)



GC-11A G
U Connector (Single Hole)



GC-11A RG
U Connector (Single Hole)



GC-11
U Connector

Material : SS 304 -4mm
Door Thickness : 8mm-12mm
Finish : Matt & Chrome Plated



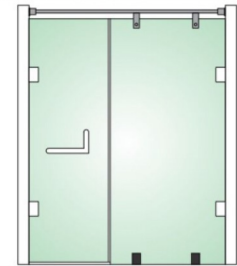
GC-11 B
U Connector



GC-11 G
U Connector



GC-11 RG
U Connector



GC-12
Glass to Glass 135°

Material : SS 304 -4mm
Door Thickness : 8mm-12mm
Finish : Matt & Chrome Plated



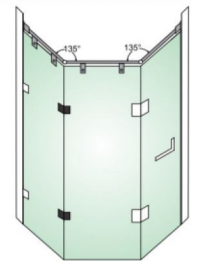
GC-12 B
Glass to Glass 135°



GC-12 G
Glass to Glass 135°



GC-12 RG
Glass to Glass 135°

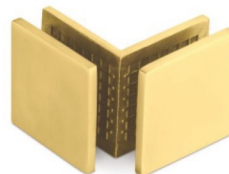


GC-13
Glass to Glass 90°

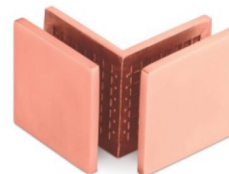
Material : SS 304 -4mm
Door Thickness : 8mm-12mm
Finish : Matt & Chrome Plated



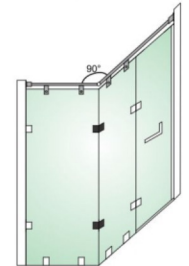
GC-13 B
Glass to Glass 90°



GC-13 G
Glass to Glass 90°



GC-13 RG
Glass to Glass 90°



GC-14
L Connector

Material : SS 304 -4mm
Door Thickness : 8mm-12mm
Finish : Matt & Chrome Plated



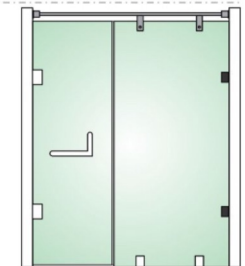
GC-14 B
L Connector



GC-14 G
L Connector



GC-14 RG
L Connector



GC-15
Glass to Glass 180°

Material : SS 304 -4mm
Door Thickness : 8mm-12mm
Finish : Matt & Chrome Plated



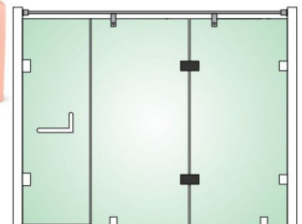
GC-15 B
Glass to Glass 180°



GC-15 G
Glass to Glass 180°



GC-15 RG
Glass to Glass 180°



GC-16
Wall to Glass 180°

Material : SS 304 -4mm
Door Thickness : 8mm-12mm
Finish : Matt & Chrome Plated



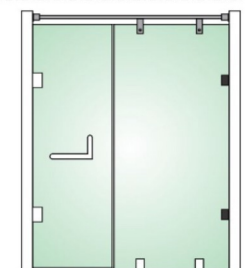
GC-16 B
Wall to Glass 180°



GC-16 G
Wall to Glass 180°



GC-16 RG
Wall to Glass 180°



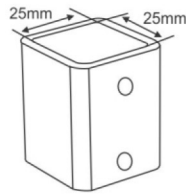


SHOWER KNIGHT HEAD ACC.

Square Series (Dia 19mm)



KH-11
Wall to Rod



Specification
Finish : Satin Nikle/Chrome Plated
Material : Stainless Steel 304 Grade
Reinforcing connector wall to rod



KH-11 B
Wall to Rod

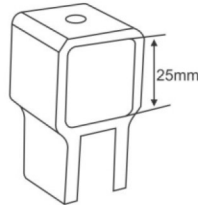
Round Series (Dia 25mm)



KH-21
Wall to Rod



KH-12
Rod to Glass



Specification
Finish : Satin Nikle/Chrome Plated
Material : SS 304 Grade
Reinforcing connector rod to glass (One side blind)



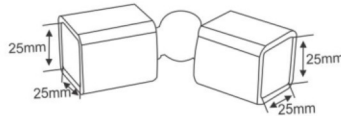
KH-12 B
Rod to Glass



KH-22
Rod to Glass
(One Side Blind)



KH-13
Rod to Rod



Specification
Finish : Satin Nikle/Chrome Plated
Material : SS 304 Grade
Reinforcing connector rod to rod (Adjustable Angle)



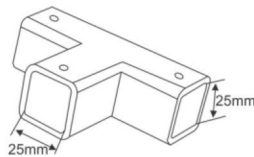
KH-13 B
Rod to Rod



KH-23
Rod to Rod



KH-14
Rod to Rod
T-Connector



Specification
Finish : Satin Nikle/Chrome Plated
Material : SS 304 Grade
Reinforcing connector rod to rod (T-Type)



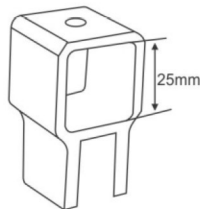
KH-14 B
Rod to Rod
T-Connector



KH-24
Rod to Rod
T-Connector



KH-15
Rod to Glass



Specification
Finish : Satin Nikle/Chrome Plated
Material : SS 304 Grade
Reinforcing connector rod to glass



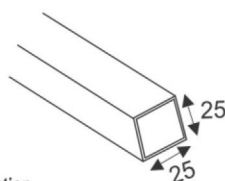
KH-15 B
Rod to Glass



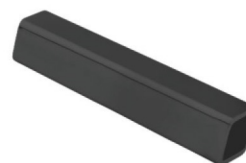
KH-25
Rod to Glass
(One Side Blind)



KH-16
Reinforcing Rod (25mm)



Specification
25mm outer diameter pipe
Available in 2 & 3 mtr. length
Material : Stainless Steel 304 Grade



KH-16 B
Reinforcing Rod (25mm)



KH-26
Reinforcing Rod (Dia 25mm)

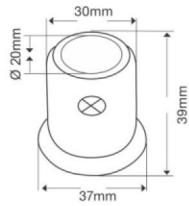
SHOWER KNIGHT HEAD ACC.



Round Series (Dia 19mm)



KH-01
Wall to Rod



Specification
Finish : Satin Nikle/Chrome Plated
Material : Stainless Steel 304 Grade/ Brass
Reinforcing connector wall to rod



KH-01 B
Wall to Rod



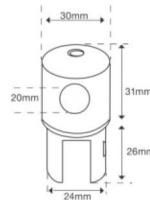
KH-01 G
Wall to Rod



KH-01 RG
Wall to Rod



KH-02
Rod to Glass
(One Side Blind)



Specification
Finish : Satin Nikle/Chrome Plated
Material : Stainless Steel 304 Grade/ Brass
Reinforcing connector rod to glass (One side blind)



KH-02 B
Rod to Glass
(One Side Blind)



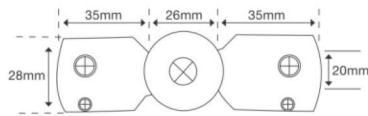
KH-02 G
Rod to Glass
(One Side Blind)



KH-02 RG
Rod to Glass
(One Side Blind)



KH-03
Rod to Rod



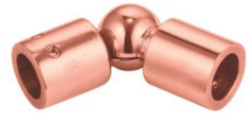
Specification
Finish : Satin Nikle/Chrome Plated
Material : Stainless Steel 304 Grade/ Brass
Reinforcing connector rod to rod (Adjustable Angle)



KH-03 B
Rod to Rod



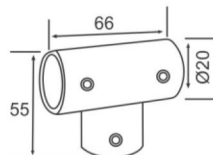
KH-03 G
Rod to Rod



KH-03 RG
Rod to Rod



KH-04
Rod to Rod
T-Connector



Specification
Finish : Satin Nikle/Chrome Plated
Material : Stainless Steel 304 Grade/ Brass
Reinforcing connector rod to rod (T-Type)



KH-04 B
Rod to Rod
T-Connector



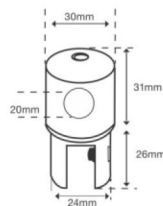
KH-04 G
Rod to Rod
T-Connector



KH-04 RG
Rod to Rod
T-Connector



KH-05
Rod to Glass
(One Side Blind)



Specification
Finish : Satin Nikle/Chrome Plated
Material : Stainless Steel 304 Grade/ Brass
Reinforcing connector rod to glass



KH-05 B
Rod to Glass
(One Side Blind)



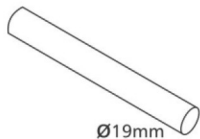
KH-05 G
Rod to Glass
(One Side Blind)



KH-05 RG
Rod to Glass
(One Side Blind)



KH-06
Reinforcing Rod (Dia 19mm)



Specification
19mm outer diameter pipe
Available in 2 & 3 mtr. length
Material : Stainless Steel 304 Grade



KH-06 B
Reinforcing Rod (Dia 19mm)



KH-06 G
Reinforcing Rod (Dia 19mm)

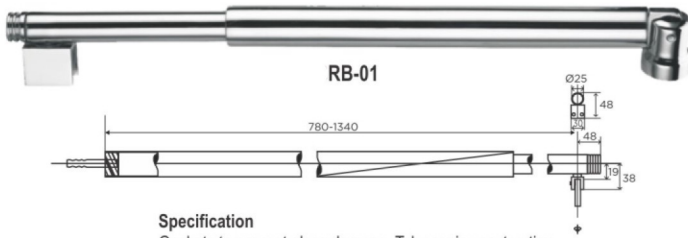


KH-06 RG
Reinforcing Rod (Dia 19mm)

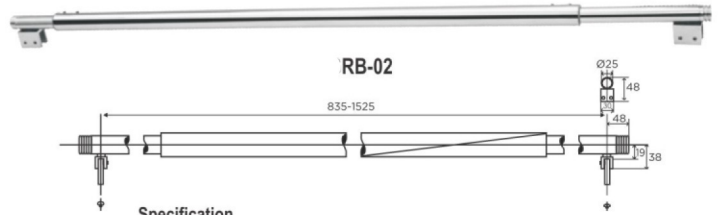


SHOWER KNIGHT HEAD ACC.

REINFORCING BAR



Specification
Gaskets to prevent glass damage, Telescopic construction
Length adjustable from 780mm to 1340mm Left Right adjustment at wall end
Firm positioning of the glass panels, Stainless Steel Grade 304, Finish: PSS

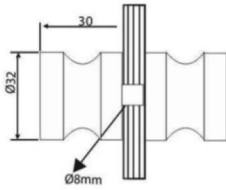


Specification
Gaskets to prevent glass damage, Telescopic construction
Length adjustable from 835mm to 1525mm, Firm positioning of the glass panels
Stainless Steel Grade 304, Finish: PSS

DOOR KNOBS



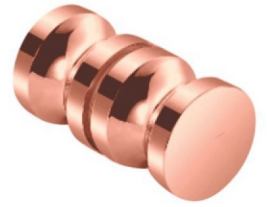
DK-01
Door Knob



DK-01B
Door Knob



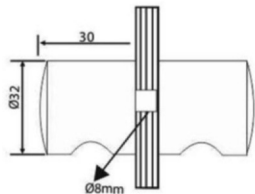
DK-01 G
Door Knob



DK-01 RG
Door Knob



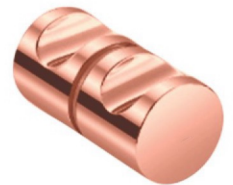
DK-02
Door Knob



DK-02 B
Door Knob



DK-02 G
Door Knob

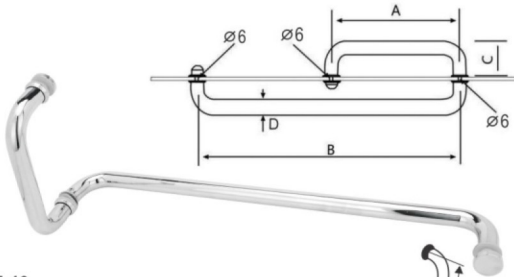


DK-02 RG
Door Knob

SHOWER HANDLES

(SS 304)

Specification
Gaskets to prevent glass damage,
Back to Back Installation
Stainless Steel Grade 304



DH-19

SIZES

19x152/457SSS
19x152/457PSS
19x152/457SSS/PSS



DH-19 B

SIZES

19x152/457SSS
19x152/457PSS
19x152/457SSS/PSS



DH-19 G

SIZES

19x152/457SSS
19x152/457PSS
19x152/457SSS/PSS



DH-19 RG

SIZES

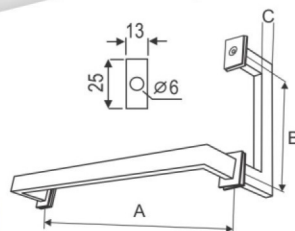
19x152/457SSS
19x152/457PSS
19x152/457SSS/PSS



DH-20

SIZES

15/30x152/457SSS
15/30x152/457SSS/PSS



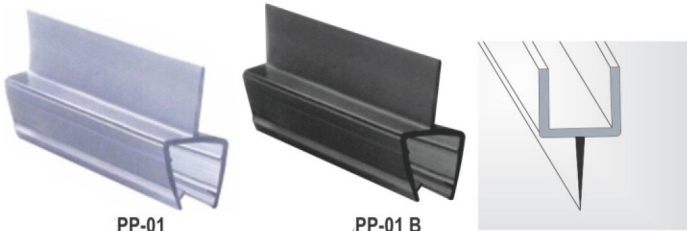
DH-20 B

SIZES

15/30x152/457SSS
15/30x152/457SSS/PSS



FINISH : Transparent For : 8/10/12mm Glass, Size : 2.2mtr / 2.5mtr.



PP-01
Centre Seal

PP-01 B
Centre Seal

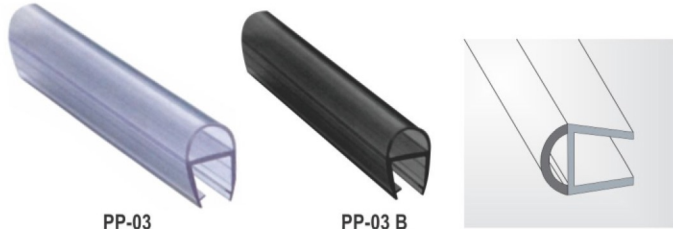
Specification
Material : PVC, Finish : Transparent
Size Available : 2.2mtr and 2.5mtr. for 8/10/12 mm Glass



PP-02
Central Seal

PP-02 B
Central Seal

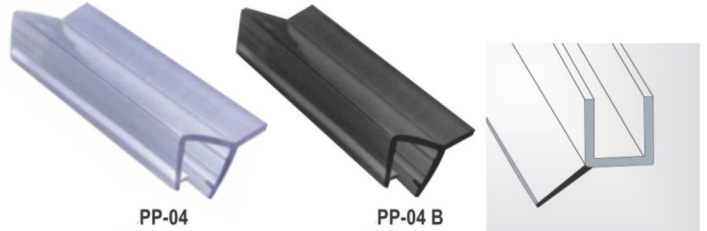
Specification
Material : PVC, Finish : Transparent
Size Available : 2.2mtr and 2.5mtr. for 8/10/12 mm Glass



PP-03
D Seal

PP-03 B
D Seal

Specification
Material : PVC, Finish : Transparent
Size Available : 2.2mtr and 2.5mtr. for 8/10/12 mm Glass



PP-04
Wall Seal

PP-04 B
Wall Seal

Specification
Material : PVC, Finish : Transparent
Size Available : 2.2mtr and 2.5mtr. for 8/10/12 mm Glass



PP-05
Magentic Seal 180°

PP-05 B
Magentic Seal 180°

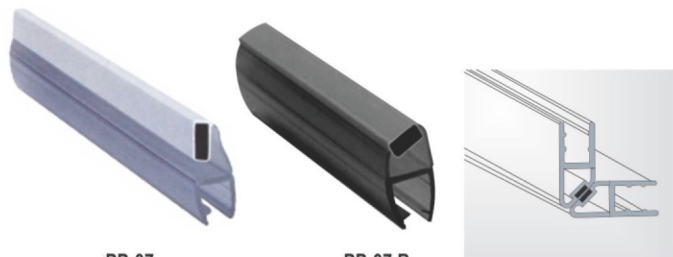
Specification
Material : PVC, Finish : Transparent
Size Available : 2.2mtr and 2.5mtr. for 8/10/12 mm Glass



PP-06
Magentic Seal 135°

PP-06 B
Magentic Seal 135°

Specification
Material : PVC, Finish : Transparent
Size Available : 2.2mtr and 2.5mtr. for 8/10/12 mm Glass



PP-07
Magentic Seal 90°

PP-07 B
Magentic Seal 90°

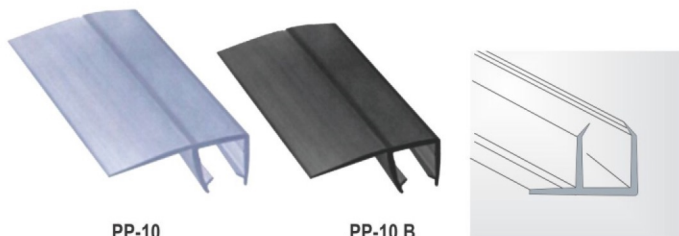
Specification
Material : PVC, Finish : Transparent
Size Available : 2.2mtr and 2.5mtr. for 8/10/12 mm Glass



PP-09
Soft Nose Seal

PP-09 B
Soft Nose Seal

Specification
Material : PVC, Finish : Transparent
Size Available : 2.2mtr and 2.5mtr. for 8/10/12 mm Glass



PP-10
Sliding Door Seal

PP-10 B
Sliding Door Seal

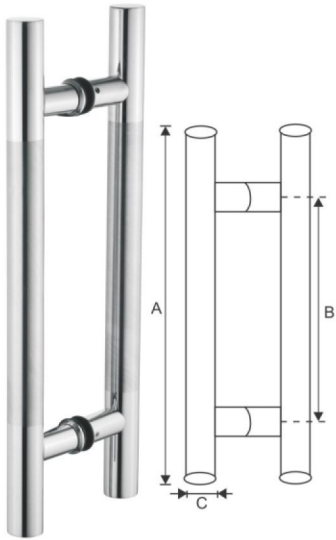
Specification
Material : PVC, Finish : Transparent
Size Available : 2.2mtr and 2.5mtr. for 8/10/12 mm Glass





DOOR HANDLES

Finish : Satin stainless steel Polish stainless steel, Material : Stainless steel, For back to back installation
 With gasket to prevent glass from damage, With grub screw to give neat look, **All sizes in mm**
 Sizes : Length X Center to Center Hole X Diameter



Overall Length (A)	Centre to Centre Hole (B)	Centre Diameter (C)
300	200	25
350	250	25
400	300	25
650	450	25
450	300	32
600	400	32
650	450	32
800	600	32
1200	900	32

Specification
 Finish : Satin + Polish stainless steel / Full Satin
 Material : Stainless steel
 For back to back installation
 With gasket to prevent glass from damage
 With grub screw to give neat look
All sizes in mm

DH-01



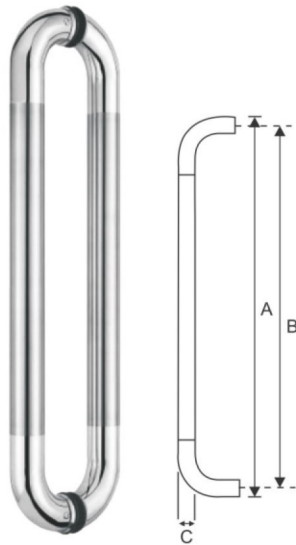
DH-01 B



DH-01 G



DH-01 RG



Overall Length (A)	Centre to Centre Hole (B)	Centre Diameter (C)
222	200	25
272	250	25
322	300	25
422	400	25
472	450	25
622	600	25
322	300	32

Specification
 Finish : Satin + Polish stainless steel / Full Satin
 Material : Stainless steel
 For back to back installation
 With gasket to prevent glass from damage
 With grub screw to give neat look
All sizes in mm

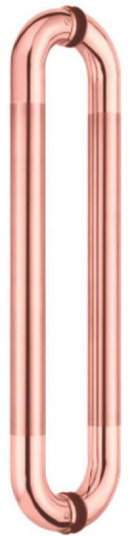
DH-03



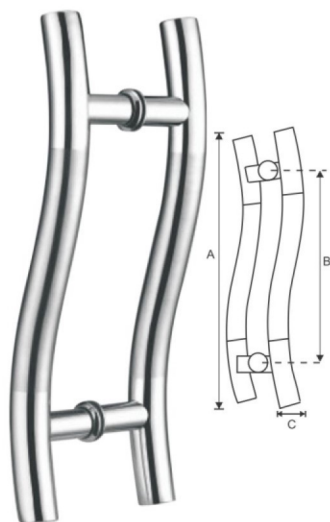
DH-03 B



DH-03 G



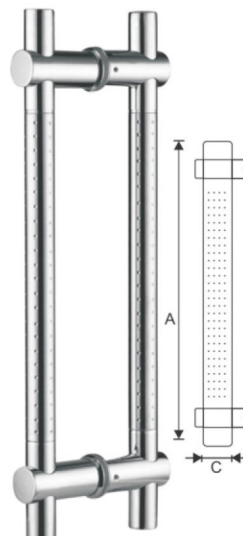
DH-03 RG



Overall Length (A)	Centre to Centre Hole (B)	Centre Diameter (C)
300	200	25
350	250	25
400	300	25

Specification
 Finish : Satin + Polish stainless steel / Full Satin
 Material : Stainless steel
 For back to back installation
 With gasket to prevent glass from damage
 With grub screw to give neat look
All sizes in mm

DH-02



Overall Length (A)	Centre to Centre Hole (B)	Centre Diameter (C)
325	200	25
457	302	21
600	450	32

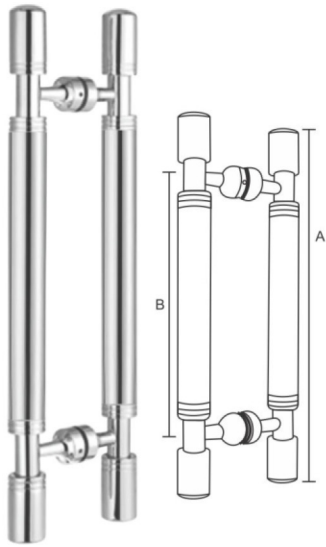
Specification
 Finish : Satin + Polish stainless steel / Full Satin
 Material : Stainless steel
 For back to back installation
 With gasket to prevent glass from damage
 With grub screw to give neat look
All sizes in mm

DH-04

DOOR HANDLES



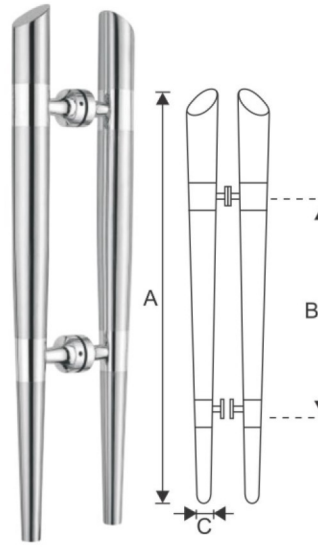
Finish : Satin stainless steel Polish stainless steel, Material : Stainless steel, For back to back installation
 With gasket to prevent glass from damage, With grub screw to give neat look, **All sizes in mm**
 Sizes : Length X Center to Center Hole X Diameter



Overall Length Centre to Centre Diameter		
(A)	Hole (B)	(C)
457	302	38

Specification
 Finish : Satin + Polish stainless steel / Full Satin
 Material : Stainless steel
 For back to back installation
 With gasket to prevent glass from damage
 With grub screw to give neat look
All sizes in mm

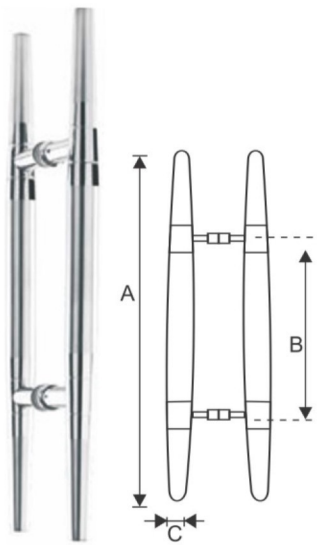
DH-05



Overall Length Centre to Centre Diameter		
(A)	Hole (B)	(C)
457	305	38

Specification
 Finish : Satin + Polish stainless steel / Full Satin
 Material : Stainless steel
 For back to back installation
 With gasket to prevent glass from damage
 With grub screw to give neat look
All sizes in mm

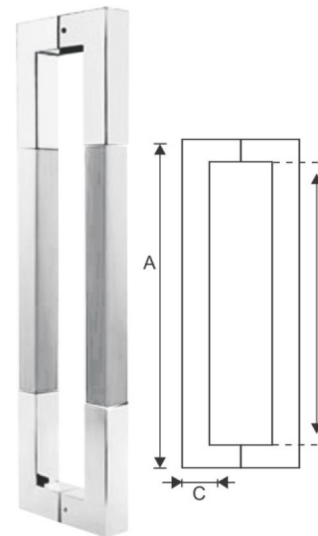
DH-06



Overall Length Centre to Centre Diameter		
(A)	Hole (B)	(C)
500	302	32

Specification
 Finish : Satin + Polish stainless steel / Full Satin
 Material : Stainless steel
 For back to back installation
 With gasket to prevent glass from damage
 With grub screw to give neat look
All sizes in mm

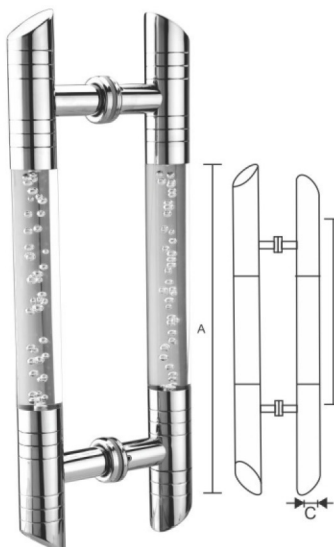
DH-07



Overall Length Centre to Centre Diameter		
(A)	Hole (B)	(C)
327	305	30

Specification
 Finish : Satin + Polish stainless steel / Full Satin
 Material : Stainless steel
 For back to back installation
 With gasket to prevent glass from damage
 With grub screw to give neat look
All sizes in mm

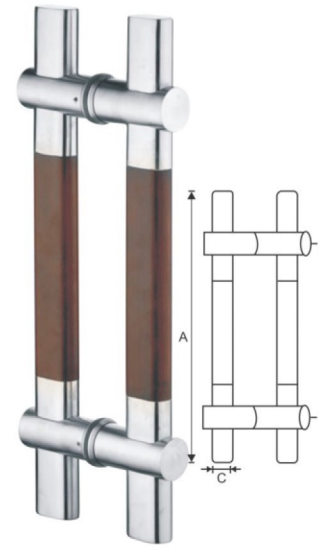
DH-08



Overall Length Centre to Centre Diameter		
(A)	Hole (B)	(C)
327	305	25
450	420	25
600	568	25

Specification
 Finish : Polish stainless steel & Acrylic
 Material : Stainless steel
 For back to back installation
 With gasket to prevent glass from damage
 With grub screw to give neat look
All sizes in mm

DH-09



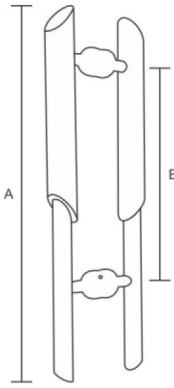
Overall Length Centre to Centre Diameter		
(A)	Hole (B)	(C)
450	305	38

Specification
 Finish : Wood/ Polish Stainless Steel (TW/PSS)
 Material : Stainless steel
 For back to back installation
 With gasket to prevent glass from damage
 With grub screw to give neat look
All sizes in mm

DH-10



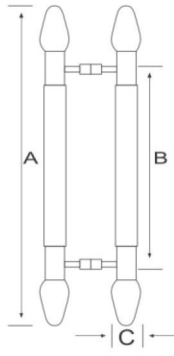
DOOR HANDLES



Overall Length Centre to Centre Diameter		
(A)	Hole (B)	(C)
450	305	38

Specification
 Finish : Wood/ Polish Stainless Steel (TW/PSS)
 Material : Stainless steel
 For back to back installation
 With gasket to prevent glass from damage
 With grub screw to give neat look
 All sizes in mm

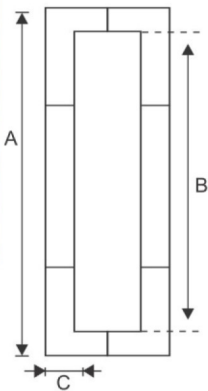
DH-11



Overall Length Centre to Centre Diameter		
(A)	Hole (B)	(C)
450	305	38

Specification
 Finish : Wood/ Polish Stainless Steel (TW/PSS)
 Material : Stainless steel
 For back to back installation
 With gasket to prevent glass from damage
 With grub screw to give neat look
 All sizes in mm

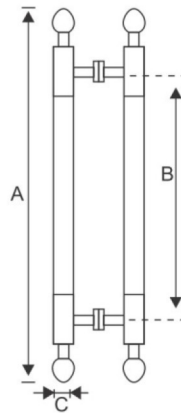
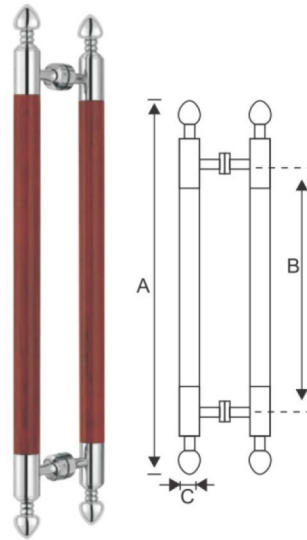
DH-12



Overall Length Centre to Centre Diameter		
(A)	Hole (B)	(C)
327	305	30

Specification
 Finish : Wood/ Polish Stainless Steel (TW/PSS)
 Material : Stainless steel
 For back to back installation
 With gasket to prevent glass from damage
 With grub screw to give neat look
 All sizes in mm

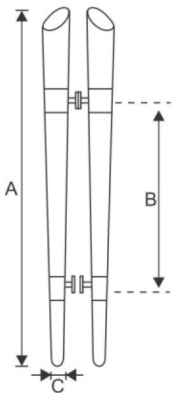
DH-13



Overall Length Centre to Centre Diameter		
(A)	Hole (B)	(C)
500	305	38

Specification
 Finish : Wood/ Polish Stainless Steel (TW/PSS)
 Material : Stainless steel
 For back to back installation
 With gasket to prevent glass from damage
 With grub screw to give neat look
 All sizes in mm

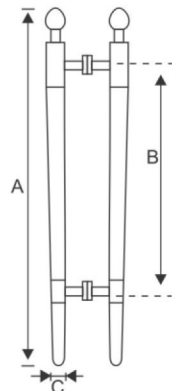
DH-14



Overall Length Centre to Centre Diameter		
(A)	Hole (B)	(C)
450	305	38

Specification
 Finish : Wood/ Polish Stainless Steel (TW/PSS)
 Material : Stainless steel
 For back to back installation
 With gasket to prevent glass from damage
 With grub screw to give neat look
 All sizes in mm

DH-15

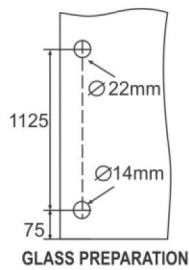
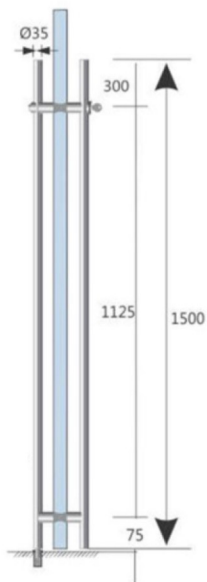


Overall Length Centre to Centre Diameter		
(A)	Hole (B)	(C)
459	305	38

Specification
 Finish : Wood/ Polish Stainless Steel (TW/PSS)
 Material : Stainless steel
 For back to back installation
 With gasket to prevent glass from damage
 With grub screw to give neat look
 All sizes in mm

DH-16

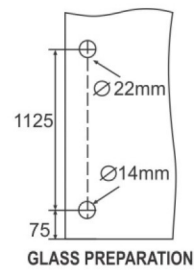
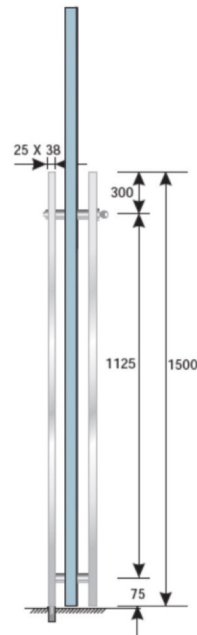
DOOR HANDLES WITH LOCK



DH-21

SIZES

35x1125x1500



DH-22

SIZES

35x1125x1500



DH-23

SIZES

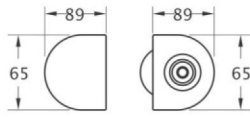
38x100/850/290x1340



LOCKS WITHOUT CUTOUT



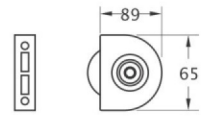
LK-1
Double Door Lock
(Only Key)



Specification
Material : Stainless Steel, Finish : Satin Stainless steel
One side key-Lock from outside only
Suitable for 10/12mm Glass
Glass preparation/cutout not required
With gasket to prevent glass from damage
With three brass computer key
Suitable for glass to Glass



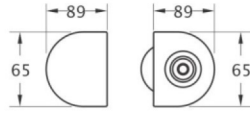
LK-2
Single Door Lock
(Only Key)



Specification
Material : Stainless Steel, Finish : Satin Stainless steel
One side key-Lock from outside only
Suitable for 10/12mm Glass
Glass preparation/cutout not required
With gasket to prevent glass from damage
With three brass computer key
Suitable for glass to wall/fix structure



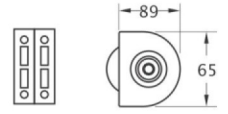
LK-3
Double Door Lock
(Key & Knob)



Specification
Material : Stainless Steel, Finish : Satin Stainless steel
One side key-Lock from outside only
Suitable for 10/12mm Glass
Glass preparation/cutout not required
With gasket to prevent glass from damage
With three brass computer key
Suitable for glass to Glass



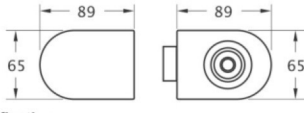
LK-4
Single Door Lock
(Key & Knob)



Specification
Material : Stainless Steel, Finish : Satin Stainless steel
One side key-Lock from outside only
Suitable for 10/12mm Glass
Glass preparation/cutout not required
With gasket to prevent glass from damage
With three brass computer key
Suitable for glass to wall/fix structure



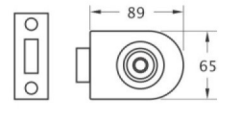
LK-5
Double Door Lock
(Key & Knob)



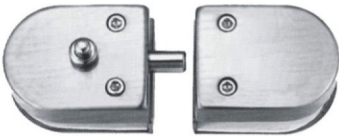
Specification
Material : Stainless Steel, Finish : Satin Stainless steel
One side key-Lock from outside only
Suitable for 10/12mm Glass
Glass preparation/cutout not required
With gasket to prevent glass from damage
With three brass computer key
Suitable for glass to Glass



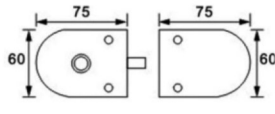
LK-6
Single Door Lock
(Key & Knob)



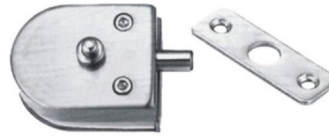
Specification
Material : Stainless Steel, Finish : Satin Stainless steel
One side key-Lock from outside only
Suitable for 10/12mm Glass
Glass preparation/cutout not required
With gasket to prevent glass from damage
With three brass computer key
Suitable for glass to wall/fix structure



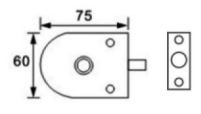
LK-7
Double Door Lock
(Only Knob)



Specification
Material : Stainless Steel, Finish : Satin Stainless steel
One side Knob only
Suitable for 10/12mm Glass
Glass preparation/cutout not required
With gasket to prevent glass from damage
Suitable for glass to Glass



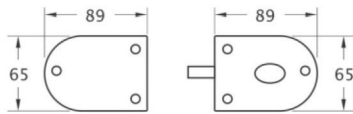
LK-8
Single Door Lock
(Only Knob)



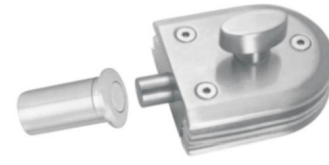
Specification
Material : Stainless Steel, Finish : Satin Stainless steel
One side Knob only
Suitable for 10/12mm Glass
Glass preparation/cutout not required
With gasket to prevent glass from damage
Suitable for glass to wall/fix structure



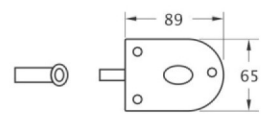
LK-9
Double Door Lock
(Only Knob)



Specification
Material : Stainless Steel, Finish : Satin Stainless steel
One side Knob only
Suitable for 10/12mm Glass
Glass preparation/cutout not required
With gasket to prevent glass from damage
Suitable for glass to Glass



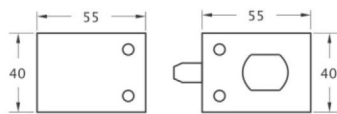
LK-10
Single Door Lock
(Only Knob)



Specification
Material : Stainless Steel, Finish : Satin Stainless steel
One side Knob only
Suitable for 10/12mm Glass
Glass preparation/cutout not required
With gasket to prevent glass from damage
Suitable for glass to wall/fix structure



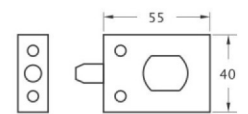
LK-11
Double Door Lock
(Only Knob)



Specification
Material : Stainless Steel, Finish : Satin Stainless steel
One side Knob only
Suitable for 10/12mm Glass
Glass preparation/cutout not required
With gasket to prevent glass from damage
Suitable for glass to Glass



LK-12
Single Door Lock
(Only Knob)



Specification
Material : Stainless Steel, Finish : Satin Stainless steel
One side Knob only
Suitable for 10/12mm Glass
Glass preparation/cutout not required
With gasket to prevent glass from damage
Suitable for glass to wall/fix structure

LOCKS WITHOUT CUTOUT



LK-3 B
Double Door Lock
(Key & Knob)



LK-3 G
Double Door Lock
(Key & Knob)



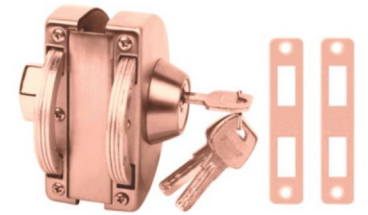
LK-3 RG
Double Door Lock
(Key & Knob)



LK-4 B
Single Door Lock
(Key & Knob)



LK-4 G
Single Door Lock
(Key & Knob)



LK-4 RG
Single Door Lock
(Key & Knob)

DIGITAL GLASS DOOR LOCK









LK-100
Double Door Lock



LK-100
Single Door Lock

Technical Details

Fingerprint Collector : Semiconductor
 Fingerprint Capacity : 1000 Pieces
 Fingerprint Time : < 0.5 Seconds
 Resistant Rate : < 0.1%
 Leave Recognition Rate : < 0.001%
 Password Group Number : 500 Groups
 Password Length : 6-20
 IC Card group Number : 500 Groups
 Remote Control Group Number : 500 Group (Optional)
 Working Power : 4 Section 5 Basic Battery
 Operating Voltage : 4.5-6.5 V
 Operating Temperature : -20 C to 55C
 Relative Humidity : 20-93 % RH
 Main Material : Zinc Alloy Die Casting, electroplating
 Applicable Door Type : Framed Door, Glass Door without Frame
 Applicable Door Thickness : Framed Door 40-60mm
 Frame Less Glass Door 10,12 and15 mm
 Emergency Power Supply : Micro USB Emergency
 Power Supply intedace, Voltage Range 5-7 V

-  One Card Function
-  Fingerprint Indetification
-  Anti Theft Alarm (Optional)
-  Doorbell
-  Combination Lock
-  Low Voltage Alarm
-  Automatic Identify office Number
-  Undetected anti-hijacking Alarm Functon
-  Remote Unlock
-  Voice Functon
-  USB Data Acquisition
-  Security Against Peeping Password Input
-  Wireless Remote Control
-  Attendance Function





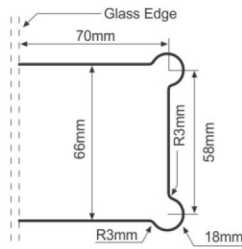
HYDRAULIC DOOR HINGES

HYDRAULIC DOOR HINGES



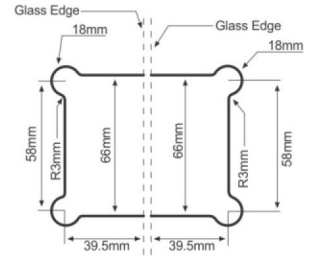
DH-01

W to G 90° Hydraulic Door Hinges

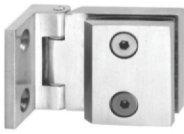


DH-02

G to G 180° Hydraulic Door Hinges

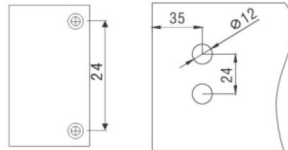


HYDRAULIC CABINET HINGES



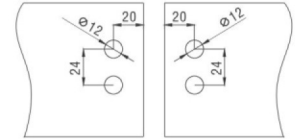
MH-01

Wall to Glass Hinges
(6-8mm Glass)



MH-04

Glass to Glass Hinges
(6-8mm Glass)



MH-03 (Brass)

Wall to Glass Cabinet Hinges
(6-8mm Glass)



GLAZING PROFILE



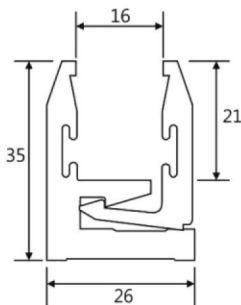
GP-01

Glazing Profile (10 Ft.)

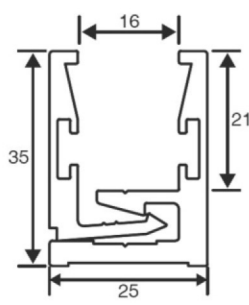


GP-01 B

Glazing Profile (10 Ft.)



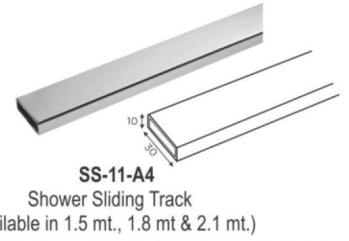
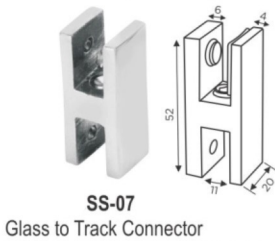
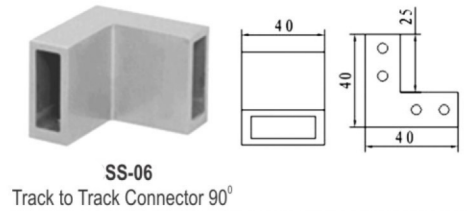
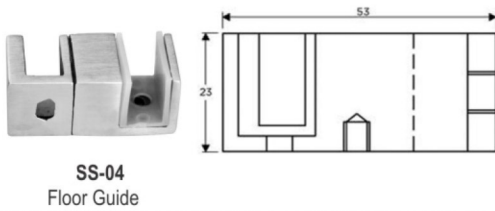
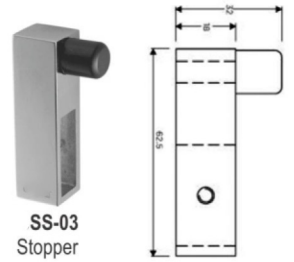
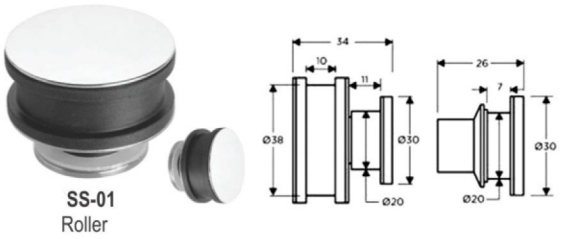
Glazing Profile



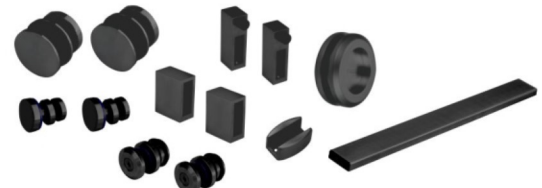
Square Type Glazing Profile



SHOWER SLIDING SYSTEM



SHOWER SLIDING SYSTEM FULL SET

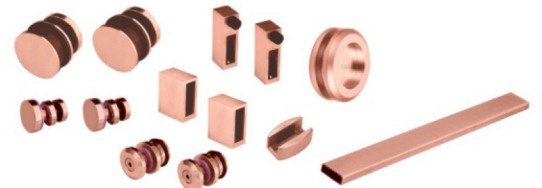


SS-01 FS (2mtr.)
Shower Sliding- 2 Pcs., Track to Glass Holder-2 Pcs.
Support for Track-2Pcs., Wall to Track Socket-2Pcs.
End Bracket-2Pcs., Floor Guide-1Pc., Sliding Door Handle-1Pc., Track 2mtr.

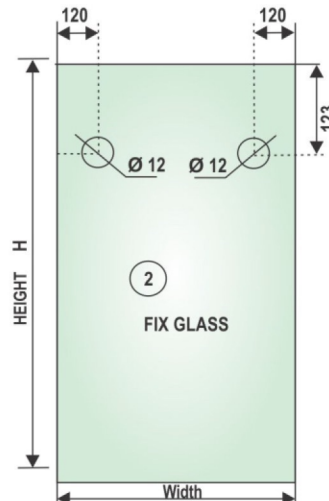
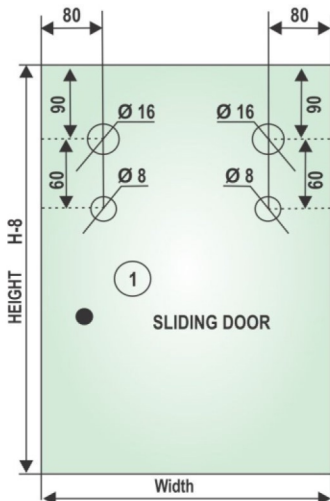
SS-01 FS B (2mtr.)
Shower Sliding- 2 Pcs., Track to Glass Holder-2 Pcs.
Support for Track-2Pcs., Wall to Track Socket-2Pcs.
End Bracket-2Pcs., Floor Guide-1Pc., Sliding Door Handle-1Pc., Track 2mtr.



SS-01 FS G (2mtr.)
Shower Sliding- 2 Pcs., Track to Glass Holder-2 Pcs.
Support for Track-2Pcs., Wall to Track Socket-2Pcs.
End Bracket-2Pcs., Floor Guide-1Pc., Sliding Door Handle-1Pc., Track 2mtr.



SS-01 FS RG (2mtr.)
Shower Sliding- 2 Pcs., Track to Glass Holder-2 Pcs.
Support for Track-2Pcs., Wall to Track Socket-2Pcs.
End Bracket-2Pcs., Floor Guide-1Pc., Sliding Door Handle-1Pc., Track 2mtr.





SHOWER GLASS SLIDING SYSTEM

SHOWER GLASS SLIDING SYSTEM SET

Single Door Shower Sliding Fitting System (2Mtr. Track)



Single Door Shower Sliding Fitting System (3Mtr. Track)

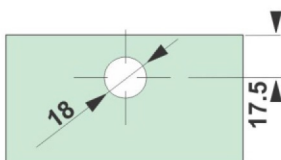


Single Door Shower Sliding Fitting System for 90 T (3Mtr. Track)



Features :

- Sliding Door Weight: 50kg Max.
- Sliding Door Size: 750x2000mm Max.
- Glass Thickness: 8 to 10mm



Glass Preparation

Regular Fitting



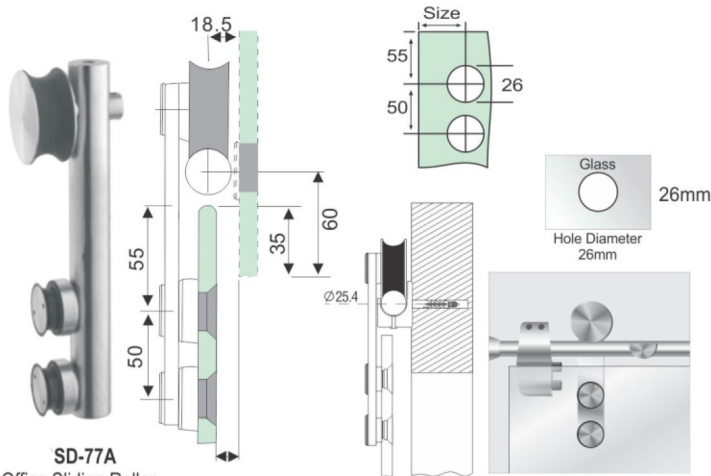
Corner Sliding Fitting



SLIDING DOOR SYSTEM



SLIDING DOOR SYSTEM



SD-77A

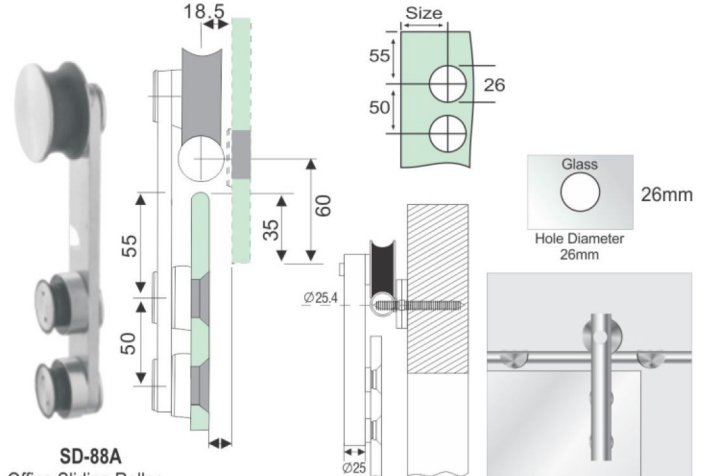
Office Sliding Roller

Specification

Material : Stainless Steel • Glass Thickness : 8mm-12mm

Weight Cap. : 150kg • Finish : SSS

Non Countersunk Hole



SD-88A

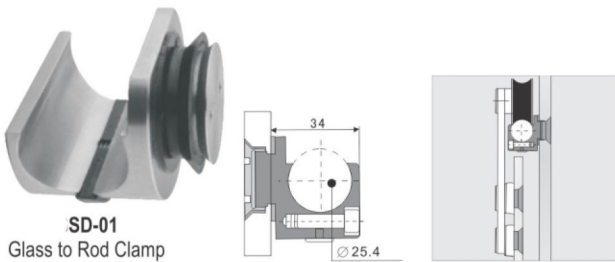
Office Sliding Roller

Specification

Material : Stainless Steel • Glass Thickness : 8mm-12mm

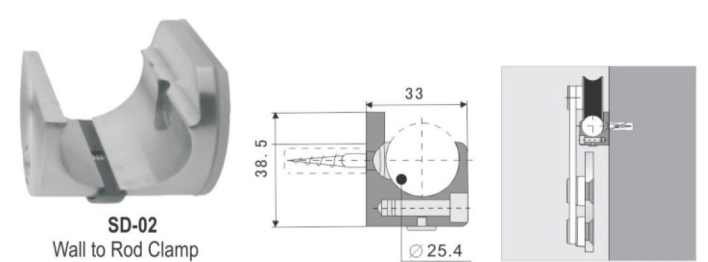
Weight Cap. : 150kg • Finish : SSS

Non Countersunk Hole



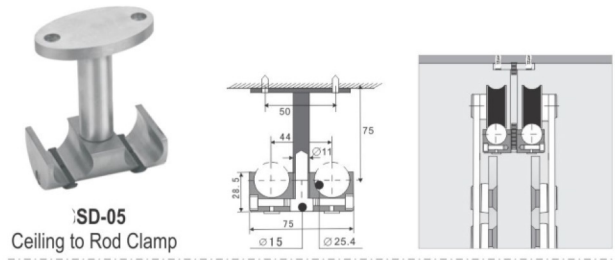
SD-01

Glass to Rod Clamp



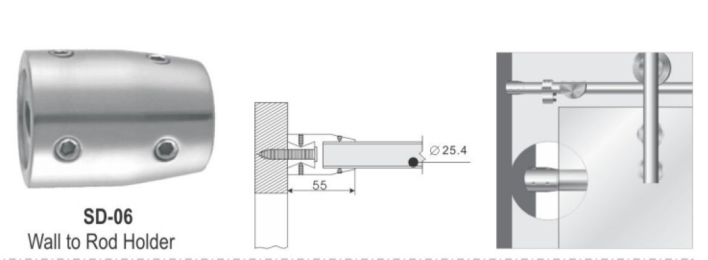
SD-02

Wall to Rod Clamp



SD-05

Ceiling to Rod Clamp



SD-06

Wall to Rod Holder



SD-07

Door Stopper



SD-08

Glass to Glass Connector 180°

SD-11
Sliding Track Rod

Sliding Door System Set- GSD-88A

Sliding Door System Set- GSD-88A B



SD-88A

Office Sliding Roller
2 Pcs

SD-01

Glass to Rod Clamp
4 Pcs



SD-88A B

Office Sliding Roller
2 Pcs

SD-01 B

Glass to Rod Clamp
4 Pcs



SD-07

Door Stopper
2 Pcs

SL-33G

Floor Guide
1 Pc



SD-07 B

Door Stopper
2 Pcs

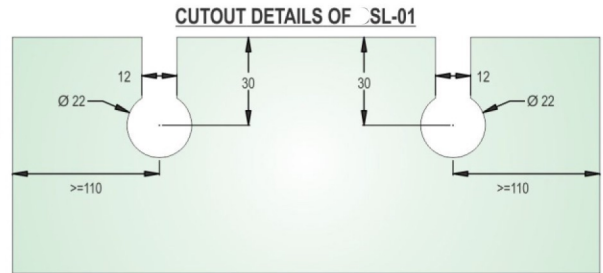
SL-33G B

Floor Guide
1 Pc





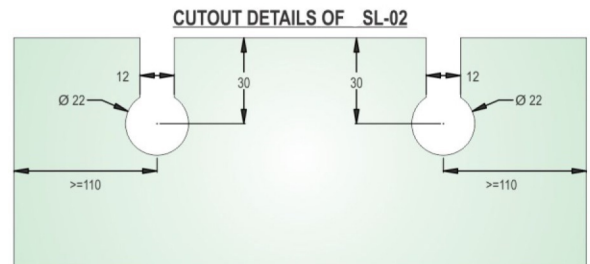
SLIDING ROLLER (SMALL COIN)



Specification

Four fiber reinforced plastic rollers of 30 mm diameter
 Stainless Steel Grade 304 glass holding point
 Height adjustable glass holding points (10 mm)
 Secure grip for the door
 Self aligning suspension of door
 Roller configuration for even distribution of load
 Independently connected rollers to prevent damage to track and rollers
 Suitable for 10 mm or 12 mm glass
 Suitable for door weight 60-80 kg.

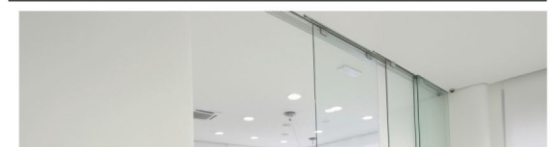
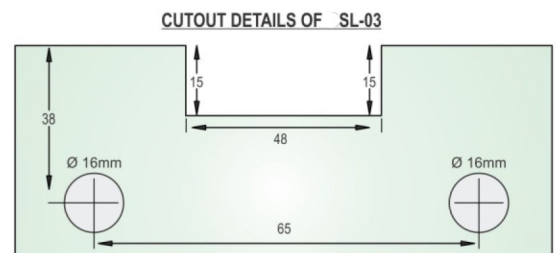
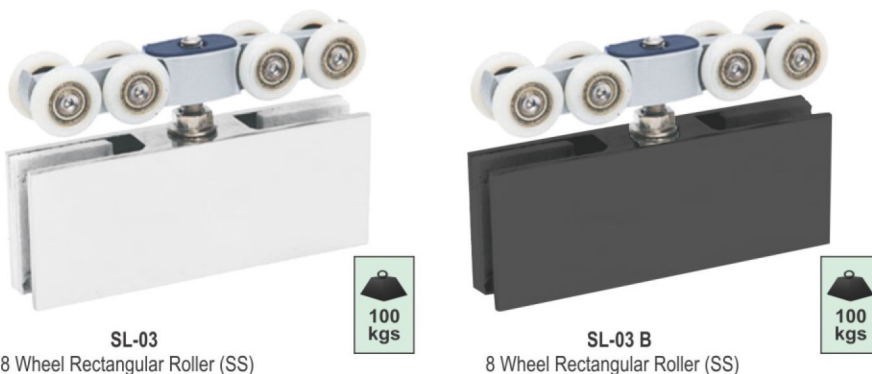
SLIDING ROLLER (BIG COIN)



Specification

Heavy duty sliding door roller
 Suitable for up to a door weight of 80-100 Kg
 Larger surface area for secure grip of the door
 Adjustable threaded rod for installation perfection
 Solid brass for glass holding

SLIDING ROLLER (8 WHEEL RECTANGLE)



Specification

Material : Stainless steel 304 grade
 Finish : Satin stainless steel (SSS)

GLASS SLIDING FITTING SET



SLIDING ROLLER SET (SMALL COIN)



SL-01 Set (Metal Body)
Roller (SS)-2Pcs.,
Stopper-2Pcs., Floor Guide-1Pc.



SL-01 Set B (Metal Body)
Roller (SS)-2Pcs.,
Stopper-2Pcs., Floor Guide-1Pc.



SL-01 P Set (Plastic Body)
Roller (SS)-2Pcs.,
Stopper-2Pcs., Floor Guide-1Pc.

SLIDING ROLLER SET (BIG COIN)



SL-02 Set (Metal Body)
Roller (Brass)-2Pcs.,
Stopper-2Pcs., Floor Guide-1Pc.

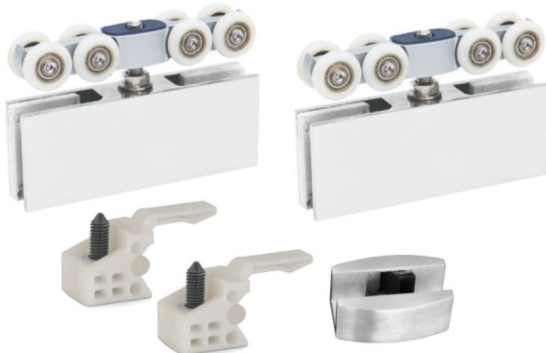


SL-02 Set B (Metal Body)
Roller (Brass)-2Pcs.,
Stopper-2Pcs., Floor Guide-1Pc.

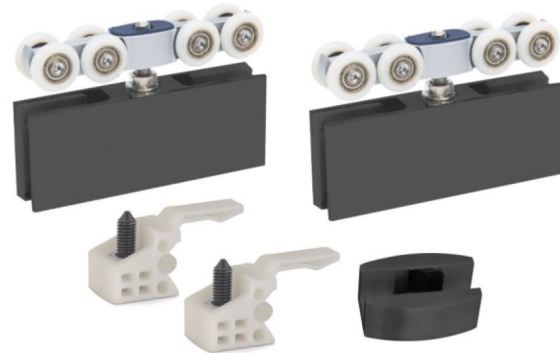


SL-02 Set P (Plastic Body)
Roller (Brass)-2Pcs.,
Stopper-2Pcs., Floor Guide-1Pc.

SLIDING ROLLER SET (8 WHEEL RECTANGLE)

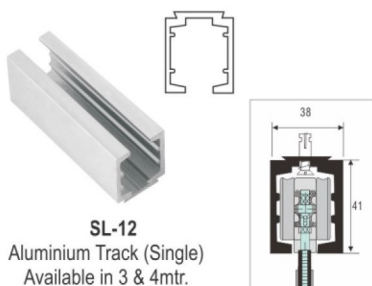


SL-03 Set
8 Wheel Rectangular Roller (SS)-2Pcs.,
Stopper-2Pcs., Floor Guide-1Pc.

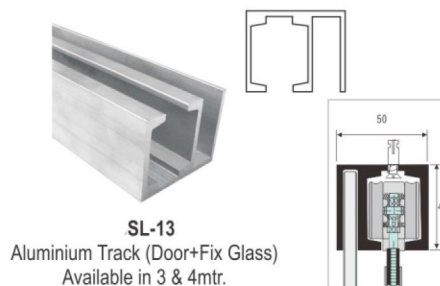


SL-03 Set
8 Wheel Rectangular Roller (SS)-2Pcs.,
Stopper-2Pcs., Floor Guide-1Pc.

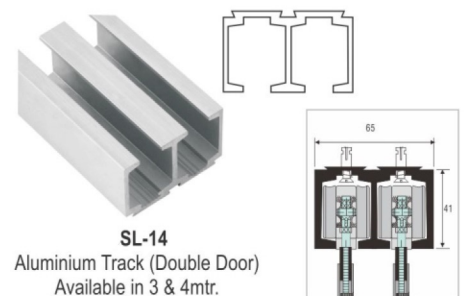
SLIDING TRACK Use These Track for Above Roller Sets



SL-12
Aluminium Track (Single)
Available in 3 & 4mtr.



SL-13
Aluminium Track (Door+Fix Glass)
Available in 3 & 4mtr.



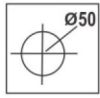
SL-14
Aluminium Track (Double Door)
Available in 3 & 4mtr.



GLASS SLIDING FITTING ACC.



SD-HN-50
Sliding Door Handle



SD-HN-50 B
Sliding Door Handle



SD-HN-50 G
Sliding Door Handle



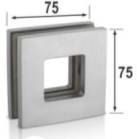
SD-HN-50 RG
Sliding Door Handle



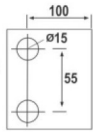
SD-04
Sliding Door Handle



SD-04 B
Sliding Door Handle



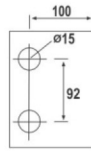
SD-03
Sliding Door Handle



SD-03 B
Sliding Door Handle



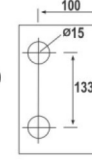
SL-04
Rectangle Handle



SL-04 B
Rectangle Handle



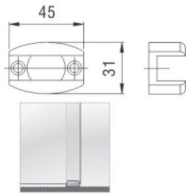
SL-04 A
Rectangle Handle



SL-04 A B
Rectangle Handle



SL-33G (SS)
Floor Guide



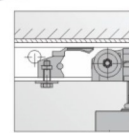
SL-33G B
Floor Guide



SL-44G (SS)
Double Floor Guide



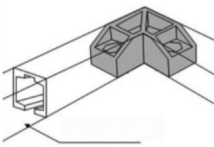
SL-05
Stopper



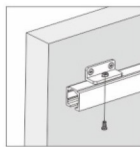
SL-06
End Bracket for Sliding Track



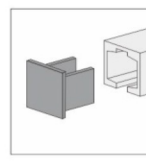
SL-07
Track Connector 90°



SL-08
Wall to Track Clamp



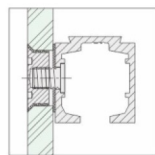
SL-11
Slide Plate for Track



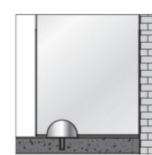
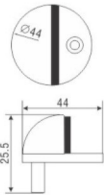
SL-15
Stopper Aluminium



SL-16
Glass to Track Clamp



SL-17
Half Stopper



SL-17 B
Half Stopper



SL-17 G
Half Stopper



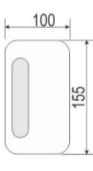
SL-17 RG
Half Stopper



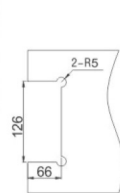
SL-18
Strike Box for Over Lap Glass



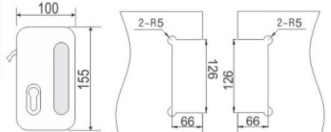
SL-19
Strike Box



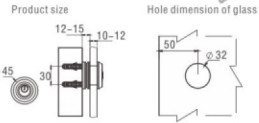
SL-20
Sliding Door Lock
with Strike Plate



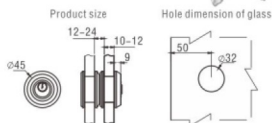
SL-21
Sliding Door Lock
with Strike Box



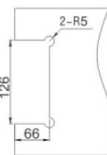
SL-22
Sliding Lock
(Wall to Glass)



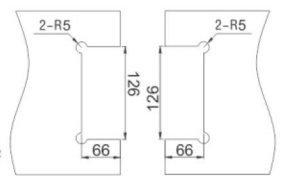
SL-23
Sliding Lock
(Glass to Glass)



SL-24
Sliding Door Lock
with Handle & Strike Plate



SL-25
Sliding Door Lock
with Handle & Strike Box



AUTOMATIC SLIDING SENSOR DOOR

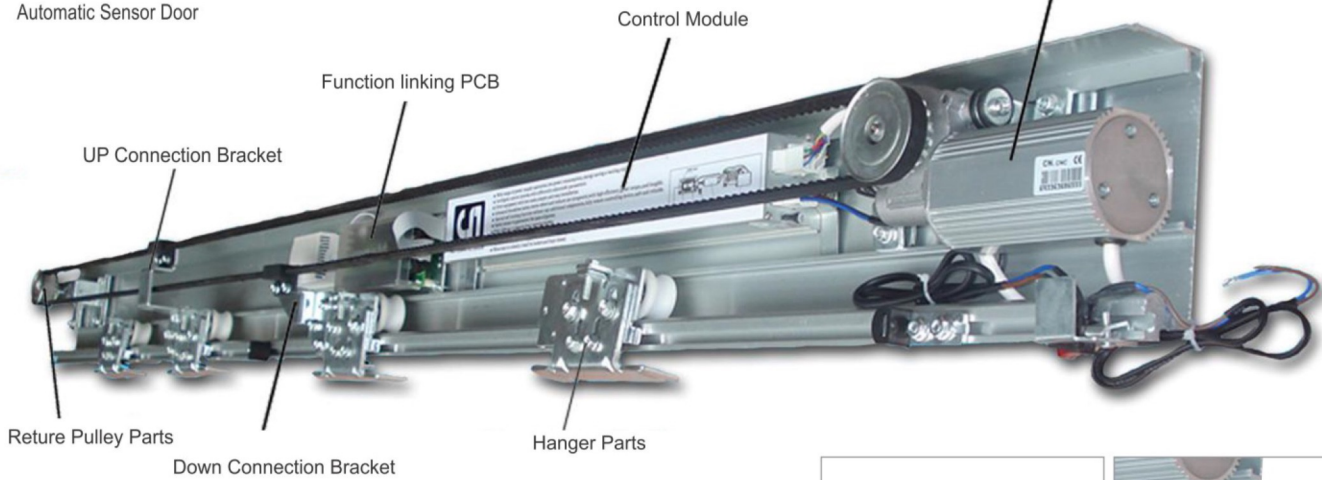


SINGLE DOOR SLIDING SYSTEM



ASD-1
Automatic Sensor Door

DC Brushless Motor



Features and advantages

1. Wide range of power-supply operation.
2. Intelligent control system.
3. Drive equipment with low noise
4. Advanced brushless motor and worm wheel reducer are integrated.
5. Special self-locking function without any addition components
6. With different triggered opening modes
7. Double door interlock function
8. Optional backup power supply to ensure the normal operation.
9. When door is closed, it shall be locked and kept closed
10. Apply to doors for garage, usage of anti-radiation for hospitals, warehouses, science and technology factories, barrier-free space, commercial building, shopping mall, etc.
11. To connect with safety and Security system.
12. Easy installation & Easy Maintenance.
13. Track size : 4200mm/6400mm.

Specification

Door Parameter	
Single Leaf Maximum Opening	1200mm x 2400mm
Bi-parting Door Maximum Opening	2200mm x 2400mm
Maximum Door Weight Single Leaf	75kg to 90kg (Single Door)
Maximum Door Weight Double Leaf	75kg x 2 Door (Bi-parting)



AUTOMATIC DOOR PARAMETER

TYPE	SASSD-1
Opening Speed	Adjust Between 250-600mm/Sec.
Closing Speed	Adjust Between 150-300mm/Sec.
Holding Time	1-15 Sec.
Pushing Force	<37N <45N
Power	Ac 200-250V
Voltage	DC 24V-50W
Environment Temperature	-200C - +500C

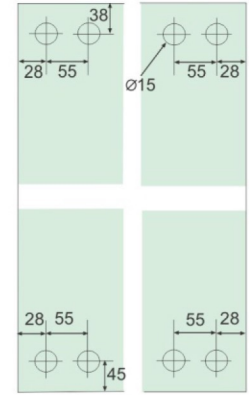


GLASS SLIDING FOLDING SYSTEM

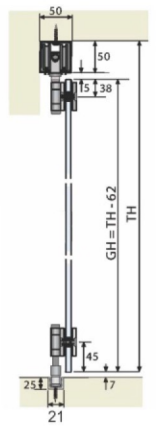
Available Finish: ■
Black (BM)



Glass Preparation for A, B & C



Glass Preparation for D



Glass Sliding Solution

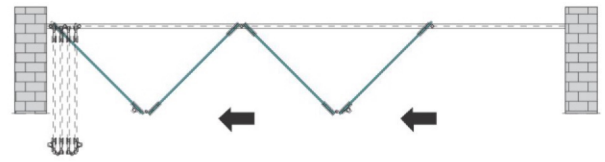
Extensive Range of Glass Sliding System and Partition Sliding System .

These are Available in Various Finishes: Satin and Black Matt .

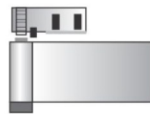
These are Required in Various Application in Showroom, Home, Mall, and Airport & Other Places.

Every Hardware Fittings is Test for Quality, Stability and Safety as per International Standard.

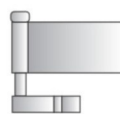
(Stainless Steel 304 Grade)



SFS-101 H
Wall to Glass Hinge



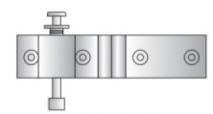
SFS-101 P
Fixed Hinge for Top Pivot



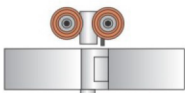
SFS-101 B
Fixed Hinges with Bottom Pivot



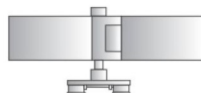
SFS-102 A
Glass to Glass Center Hinge



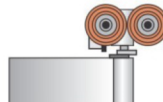
SFS-102 B
Glass to Glass Center Hinge
with Floor Lock



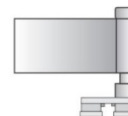
SFS-103 A
Glass to Glass Center Hinge
with Roller



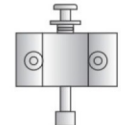
SFS-103 A
Glass to Glass Center Hinge
with Roller



SFS-104 A
End Hinge with Roller



SFS-104 B
End Hinge with Guide



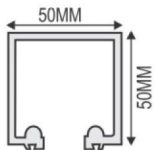
SFS-105 (L/R)
End Panel Fitting with Floor Lock



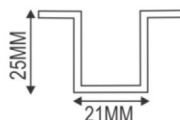
SFS-106
Center Hinge with Handle



SFS-107
Center Partition Handle



SFS-01
Top Track (12 Ft.)
Aluminium



SFS-02
Bottom Track (12 Ft.)
Aluminium

SFS-101- Satin

Ordering Information for Glass Sliding Folding System- R1-SFS-101

Product Code	GSFS-101 P GSFS-101 B	GSFS-102 A GSFS-102 B	GSFS-103 A GSFS-103 B	GSFS-104 A GSFS-104 B
No. of Panels 02	1 Set	1 Set	-	1 Set
No. of Panels 03	1 Set	1 Set	1 Set	-
No. of Panels 04	1 Set	2 Set	1 Set	1 Set
No. of Panels 05	1 Set	2 Set	2 Set	-
No. of Panels 06	1 Set	3 Set	2 Set	1 Set

SFS-101- Black Matt

Ordering Information for Glass Sliding Folding System- R1-SFS-101 (Black Matt)

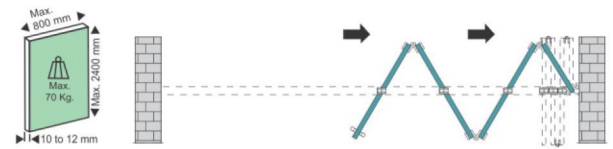
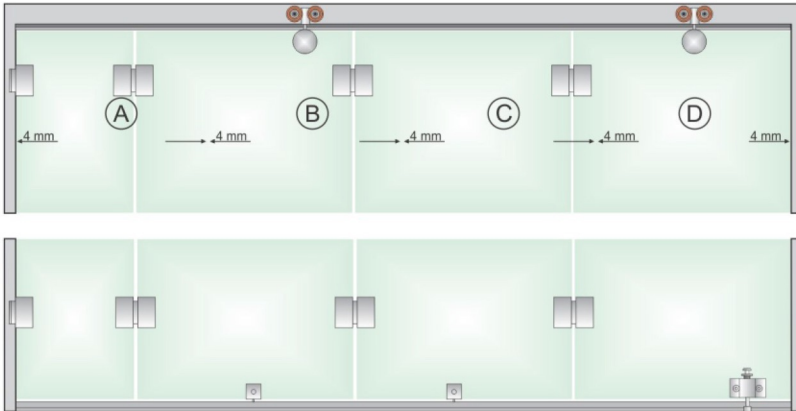
Product Code	GSFS-101 P GSFS-101 B	GSFS-102 A GSFS-102 B	GSFS-103 A GSFS-103 B	GSFS-104 A GSFS-104 B
No. of Panels 02	1 Set	1 Set	-	1 Set
No. of Panels 03	1 Set	1 Set	1 Set	-
No. of Panels 04	1 Set	2 Set	1 Set	1 Set
No. of Panels 05	1 Set	2 Set	2 Set	-
No. of Panels 06	1 Set	3 Set	2 Set	1 Set

HFS-102- Satin

Ordering Information for Glass Sliding Folding System- R1-SFS-102

Product Code	GSFS-101 H GSFS-101 H	GSFS-102 A GSFS-102 B	GSFS-103 A GSFS-103 B	GSFS-104 A GSFS-104 B
No. of Panels 02	1 Set	1 Set	-	1 Set
No. of Panels 03	1 Set	1 Set	1 Set	-
No. of Panels 04	1 Set	2 Set	1 Set	1 Set
No. of Panels 05	1 Set	2 Set	2 Set	-
No. of Panels 06	1 Set	3 Set	2 Set	1 Set

GLASS CENTER SLIDING FOLDING SYSTEM



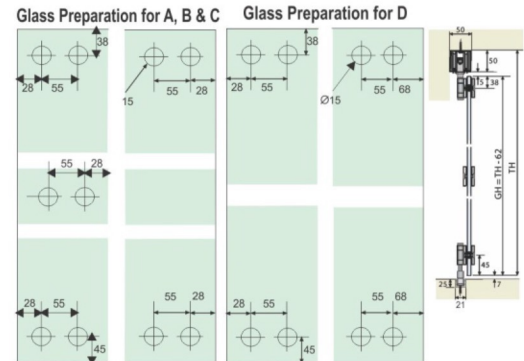
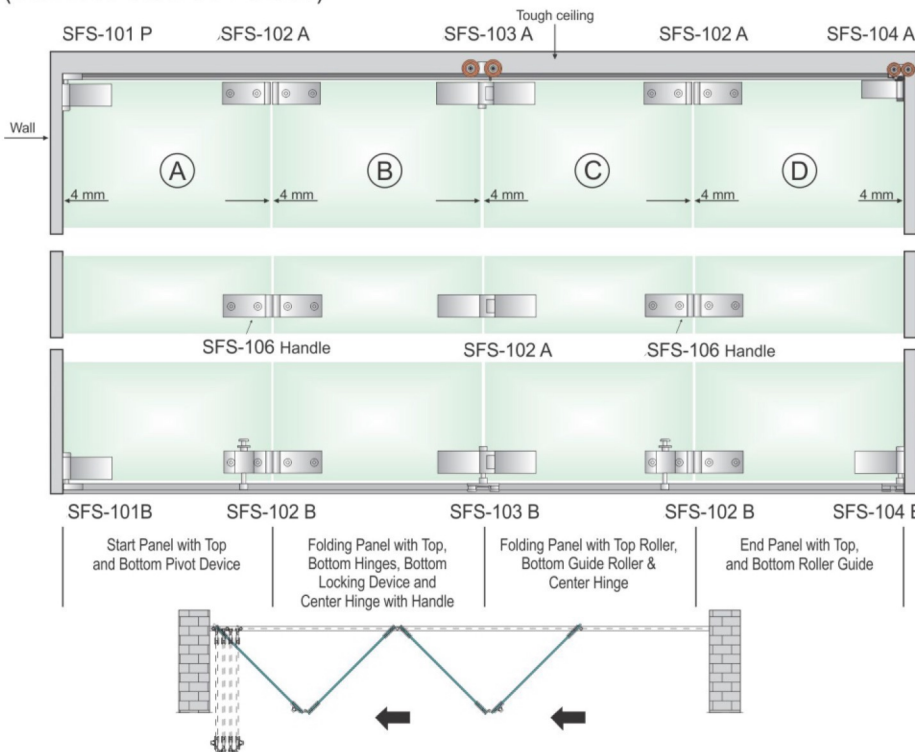
Ordering Information for Center Sliding Folding System

Products				
Code	GCFS-01	GCFS-02	GCFS-03	GGL-021
For 2 Door	1	2	2	Optional
For 3 Door	2	2	4	Optional
For 4 Door	3	2	6	Optional
For 5 Door	4	2	8	Optional
For 6 Door	5	2	10	Optional

GLASS SLIDING FOLDING SYSTEM SFS-103

Available Finish: Black (BM)

(Stainless Steel 304 Grade)



Ordering Information for Glass Sliding Folding System- SFS-103 (Satin)

Product Code				
	SFS-101 P SFS-101 B	SFS-102 A SFS-106 SFS-102 B	SFS-103 A SFS-102 A SFS-103 B	SFS-104 A SFS-104 B
No. of Panels 02	1 Set	1 Set	-	1 Set
No. of Panels 03	1 Set	1 Set	1 Set	-
No. of Panels 04	1 Set	2 Set	1 Set	1 Set
No. of Panels 05	1 Set	2 Set	2 Set	-
No. of Panels 06	1 Set	3 Set	2 Set	1 Set

Ordering Information for Glass Sliding Folding System- SFS-103 (Black Matt)

Product Code				
	SFS-101 P SFS-101 B	SFS-102 A SFS-106 SFS-102 B	SFS-103 A SFS-102 A SFS-103 B	SFS-104 A SFS-104 B
No. of Panels 02	1 Set	1 Set	-	1 Set
No. of Panels 03	1 Set	1 Set	1 Set	-
No. of Panels 04	1 Set	2 Set	1 Set	1 Set
No. of Panels 05	1 Set	2 Set	2 Set	-
No. of Panels 06	1 Set	3 Set	2 Set	1 Set



TELESCOPIC SLIDING FOLDING SYSTEM

Available Finish: **Black Matt** **Brush Gold**

SINGLE DOOR SLIDING SYSTEM

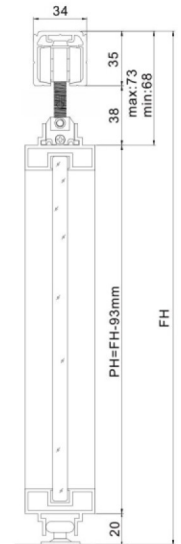
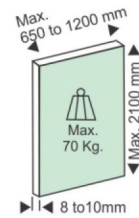


TSS-01
Telescopic Sliding System

Features

Telescopic Sliding System for Single Door.
Suitable for Sliding Doors for Homes, Hotels, Office Buildings etc.
Space Saving, Good Decorative .
Sliding Track: Aluminium Anodized.
Hanging Roller : Zinc Alloy, SN.

Single Door Telescopic Accessories Set.
Sliding Top Track.
Track Decorative Cover .
Top & Bottom Profile.
Side Profile.
Handles.
Divider Profile as Per Requirement.



2+1 TELESCOPIC SLIDING SYSTEM

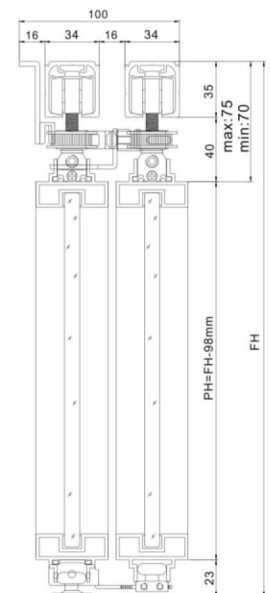


TSS-02
Telescopic Sliding System

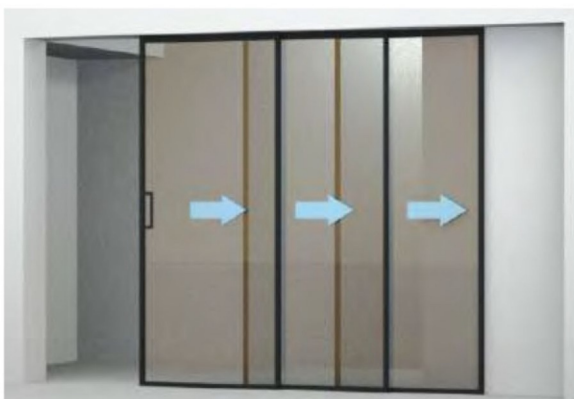
Features

Telescopic Sliding System for Two Door.
Suitable for Sliding Doors for Homes, Hotels, Office Buildings etc.
Space Saving, Good Decorative .
Sliding Track: Aluminium Anodized.
Hanging Roller : Zinc Alloy, SN.

2 Door Telescopic Accessories Set.
Sliding Top Track.
Track Decorative Cover .
Top & Bottom Profile.
Side Profile.
Handles.
Divider Profile as Per Requirement.



3+1 TELESCOPIC SLIDING SYSTEM

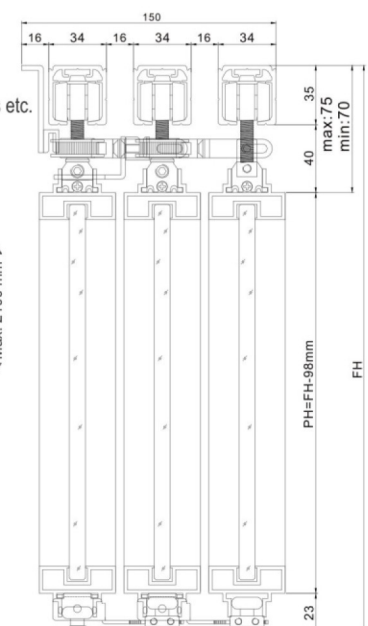


TSS-03
Telescopic Sliding System

Features

Telescopic Sliding System for Three Door.
Suitable for Sliding Doors for Homes, Hotels, Office Buildings etc.
Space Saving, Good Decorative .
Sliding Track: Aluminium Anodized.
Hanging Roller : Zinc Alloy, SN.

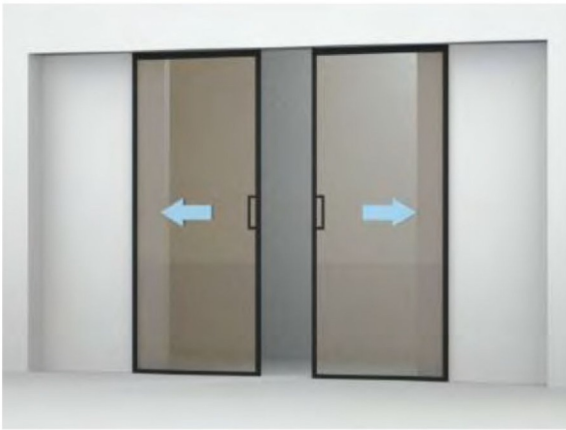
3 Door Telescopic Accessories Set.
Sliding Top Track.
Track Decorative Cover .
Top & Bottom Profile.
Side Profile.
Handles.
Divider Profile as Per Requirement.



PROFILE SYNCHRONIZED SLIDING SYSTEM



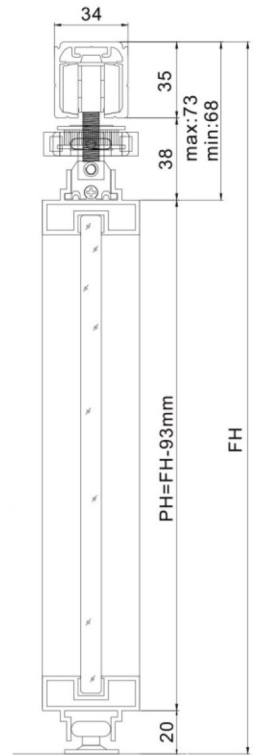
Available Finish: Black Matt Brush Gold



TSS-10
Profile Synchronized Sliding System

Features

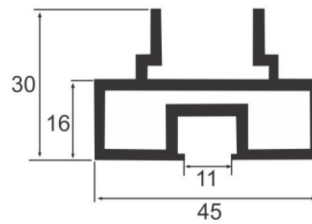
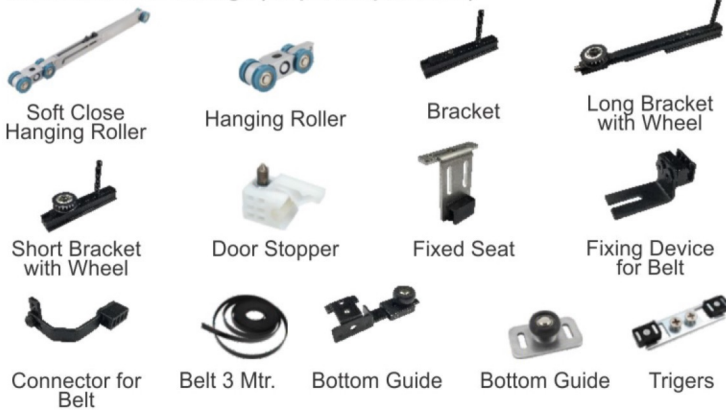
- For Double Leaf Sliding Doors, Synchronized Inversion Sliding System for Double Doors.
- Suitable for Sliding Doors for Homes, Hotels, Office Buildings etc .
- Space Saving, Good Decorative .
- Sliding Track: Aluminium Anodized.
- Hanging Roller: Zinc Alloy, SN.
- Synchronized Accessories Set.
- Sliding Top Track.
- Track Decorative Cover .
- Top & Bottom Profile .
- Side Profile.
- Handles.
- Divider Profile as Per Requirement.



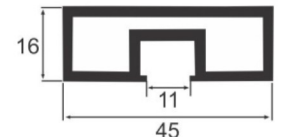
ACCESSORIES FOR FITTINGS

Accessories for Fittings (As per Requirement)

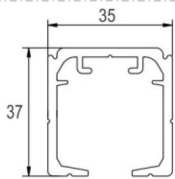
Available Finish: Black Matt Brush Gold



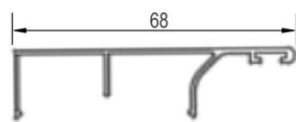
GGP -100
Horizontal Profile
Available Colours :
Black, Brush Gold, Rose Gold



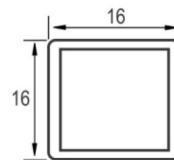
GGP -101
Vertical Profile
Available Colours :
Black, Brush Gold, Rose Gold



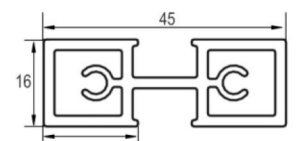
GP -102
Track
Available Colours :
Black, Brush Gold, Rose Gold



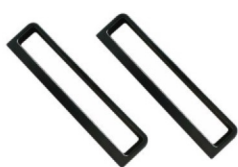
GP -103
Track Cover
Available Colours :
Black, Brush Gold, Rose Gold



GP -104
Sticking Profile
Available Colours :
Black, Brush Gold, Rose Gold



GP -105
Divider Profile
Available Colours :
Black, Brush Gold, Rose Gold



GP -106
Sliding Handle
Available Colours :
Black, Brush Gold, Rose Gold



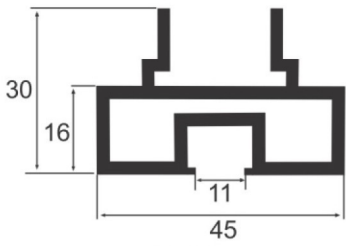
GP -107
Sliding Handle with Lock
Available Colours :
Black, Brush Gold, Rose Gold



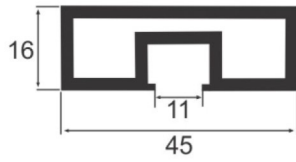
GP -111
Profile Corner Jointer



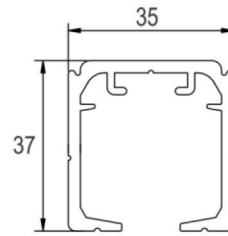
GP -115
Fix Door Accessories



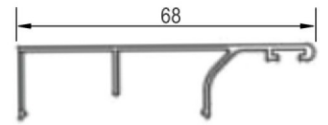
GP -100
Horizontal Profile
Available Colours :
Black, Brush Gold, Rose Gold



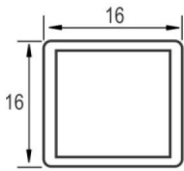
GP -101
Vertical Profile
Available Colours :
Black, Brush Gold, Rose Gold



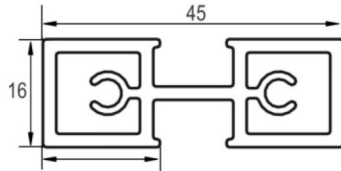
GP -102
Track
Available Colours :
Black, Brush Gold, Rose Gold



GP -103
Track Cover
Available Colours :
Black, Brush Gold, Rose Gold



GP -104
Sticking Profile
Available Colours :
Black, Brush Gold, Rose Gold



GP -105
Divider Profile
Available Colours :
Black, Brush Gold, Rose Gold



GP -106
Sliding Handle
Available Colours :
Black, Brush Gold, Rose Gold



GP -107
Sliding Handle with Lock
Available Colours :
Black, Brush Gold, Rose Gold

GLASS PROFILE ACCESSORIES



GP -108
Mortise Handle
Available Colours :
Black, Brush Gold, Rose Gold



GP -109
Glass Door Hinge
Available Colours :
Black, Brush Gold, Rose Gold



GP -110
Arm Pivot

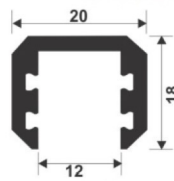


GP -111
Profile Corner Jointer

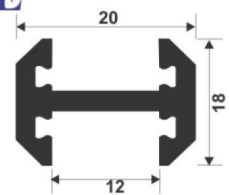


GP -112
Fix Door Accessories

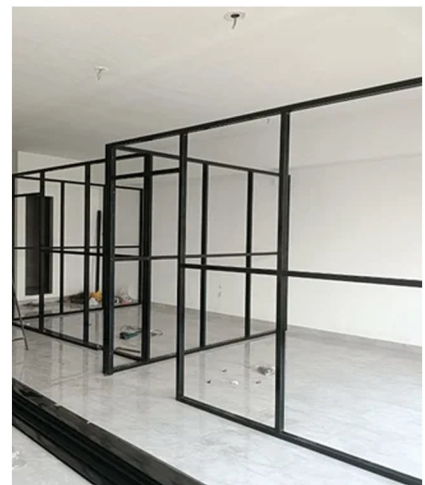
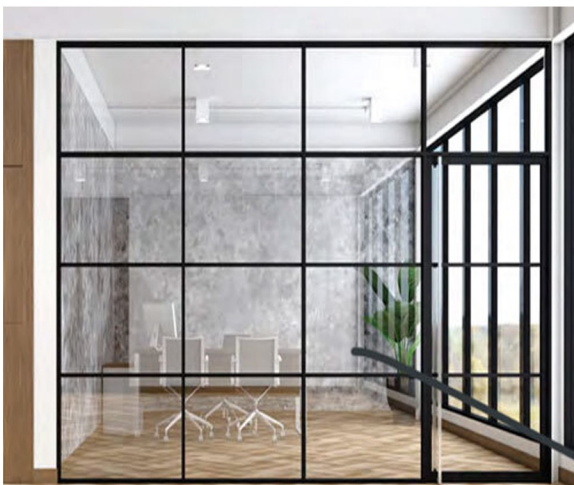
FIXED PROFILE



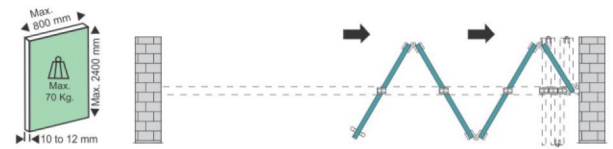
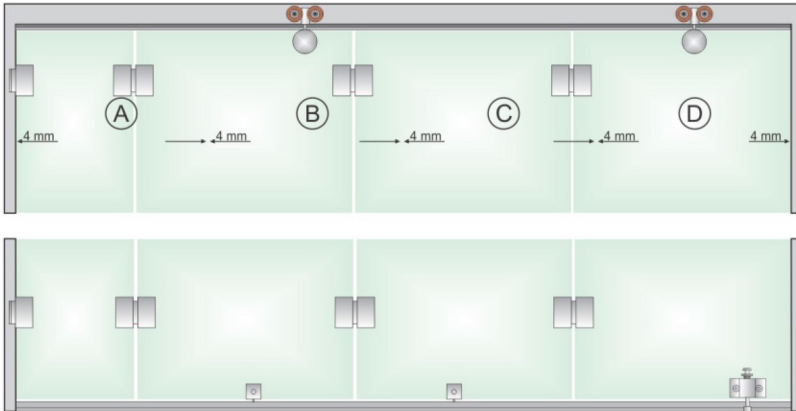
GP -113
Glass Edge Profile (Black Matt)



GP -114
Glass Edge Profile for Partition (Black Matt)



GLASS CENTER SLIDING FOLDING SYSTEM



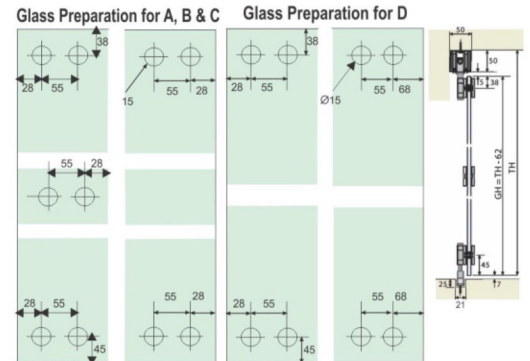
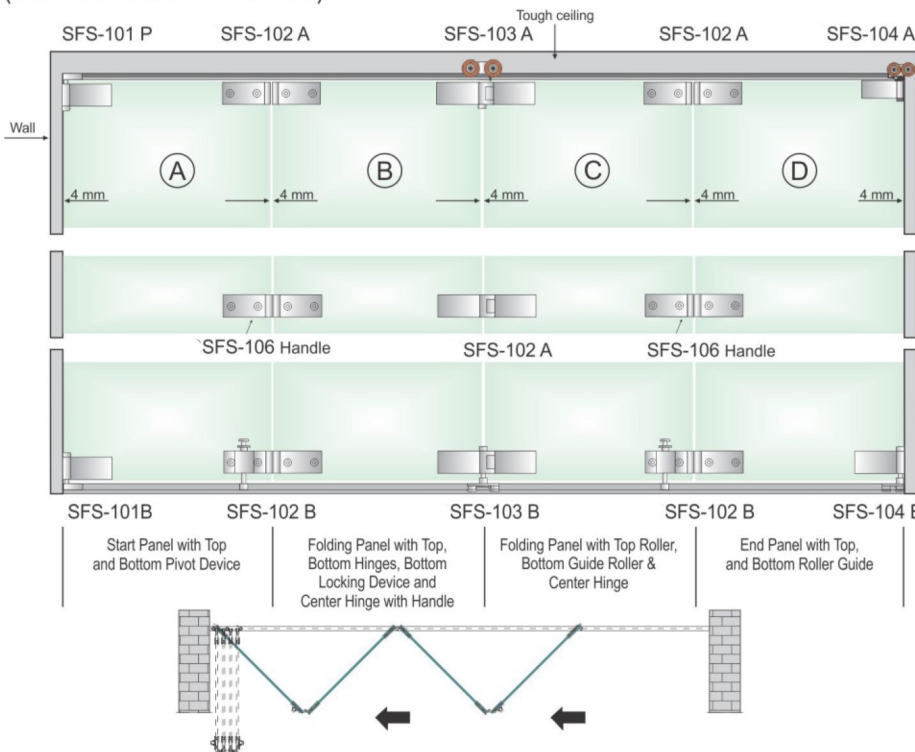
Ordering Information for Center Sliding Folding System

Products				
Code	CFS-01	CFS-02	CFS-03	GL-021
For 2 Door	1	2	2	Optional
For 3 Door	2	2	4	Optional
For 4 Door	3	2	6	Optional
For 5 Door	4	2	8	Optional
For 6 Door	5	2	10	Optional

GLASS SLIDING FOLDING SYSTEM SFS-103

Available Finish: Black (BM)

(Stainless Steel 304 Grade)



Ordering Information for Glass Sliding Folding System- SFS-103 (Satin)

Product Code				
Product Code	SFS-101 P SFS-101 B	SFS-102 A SFS-106 SFS-102 B	SFS-103 A SFS-102 A SFS-103 B	SFS-104 A SFS-104 B
No. of Panels 02	1 Set	1 Set	-	1 Set
No. of Panels 03	1 Set	1 Set	1 Set	-
No. of Panels 04	1 Set	2 Set	1 Set	1 Set
No. of Panels 05	1 Set	2 Set	2 Set	-
No. of Panels 06	1 Set	3 Set	2 Set	1 Set

Ordering Information for Glass Sliding Folding System- SFS-103 (Black Matt)

Product Code				
Product Code	SFS-101 P SFS-101 B	SFS-102 A SFS-106 SFS-102 B	SFS-103 A SFS-102 A SFS-103 B	SFS-104 A SFS-104 B
No. of Panels 02	1 Set	1 Set	-	1 Set
No. of Panels 03	1 Set	1 Set	1 Set	-
No. of Panels 04	1 Set	2 Set	1 Set	1 Set
No. of Panels 05	1 Set	2 Set	2 Set	-
No. of Panels 06	1 Set	3 Set	2 Set	1 Set

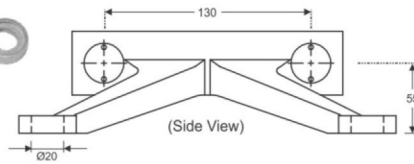


SPIDERS WITH FIN

(SS 316)



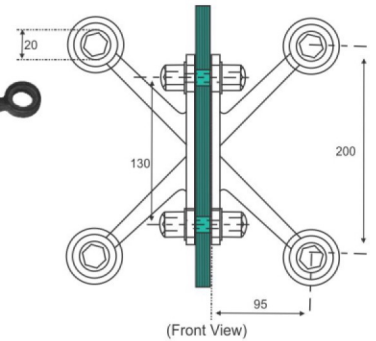
SF-A4
Four Way Spider



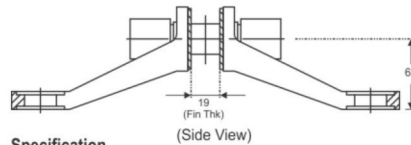
Specification
Four Way Spider with fin to suit four panel glass assembly
Material : Stainless Steel 316 Grade
With gasket & Teflon washers to prevent glass from damage
Hold glass with the help of articulated/fix routels



SF-A4 B
Four Way Spider



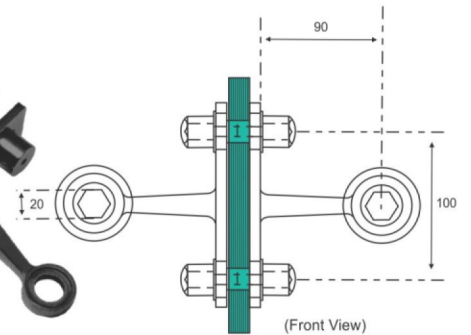
SF-A2
Two Way Spider



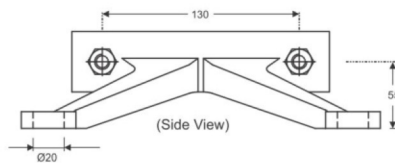
Specification
Two Way Spider with fin to suit two panel glass assembly
Material : Stainless Steel 316 Grade
With gasket & teflon washers to prevent glass from damage
Hold glass with the help of articulated/fix routels



SF-A2 B
Two Way Spider



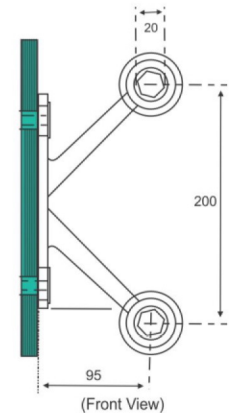
SF-A44
Two Way Spider (Wall Mounted)



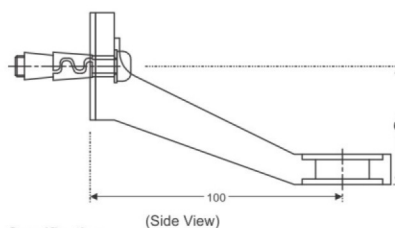
Specification
Two Way Spider with fin to suit two panel wall assembly
Material : Stainless Steel 316 Grade
With gasket & teflon washers to prevent glass from damage
Hold glass with the help of articulated/fix routels



SF-A44 B
Two Way Spider (Wall Mounted)



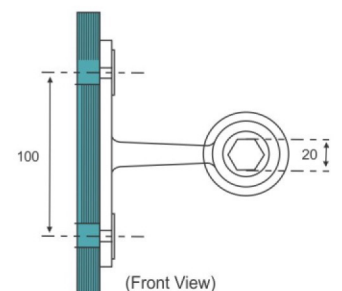
SF-A22
One Way Spider (Wall Mounted)



Specification
One Way Spider with fin to suit one panel wall assembly
Material : Stainless Steel 316 Grade
With gasket & Teflon washers to prevent glass from damage
Hold glass with the help of articulated/fix routels



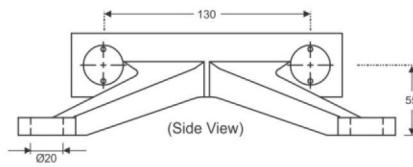
SF-A22 B
One Way Spider (Wall Mounted)



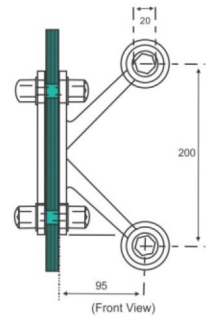
SPIDER FITTING



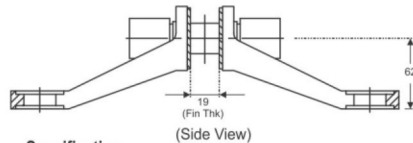
SF-A3
Two Way Fin Type Spider 90°



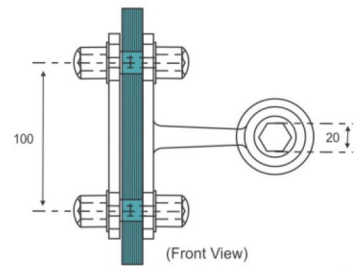
Specification
Two Way Spider with fin to suit two panel wall assembly
Material : Stainless Steel 316 Grade
With gasket & Teflon washers to prevent glass from damage
Hold glass with the help of articulated/fix routels



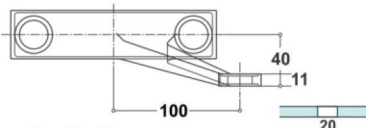
SF-A5
One Way Fin Type Spider



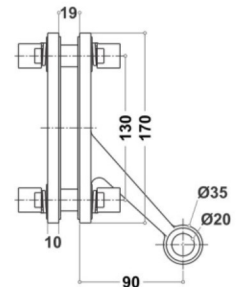
Specification
One Way Spider with fin to suit one panel wall assembly
Material : Stainless Steel 316 Grade
With gasket & Teflon washers to prevent glass from damage
Hold glass with the help of articulated/fix routels



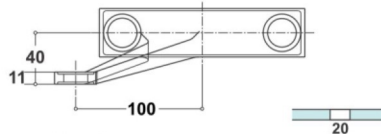
SF-A6
One Way Fin Type Spider 45° (Right Side)



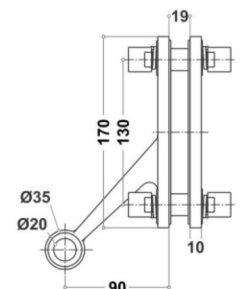
Specification
One Way Spider with fin to suit one panel wall assembly
Material : Stainless Steel 316 Grade
With gasket & Teflon washers to prevent glass from damage
Hold glass with the help of articulated/fix routels



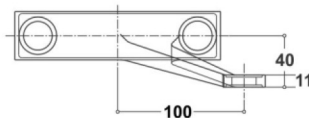
SF-A7
One Way Fin Type Spider 45° (Left Side)



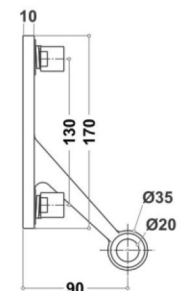
Specification
One Way Spider with fin to suit one panel wall assembly
Material : Stainless Steel 316 Grade
With gasket & Teflon washers to prevent glass from damage
Hold glass with the help of articulated/fix routels



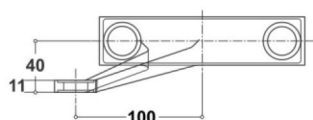
SF-A7
One Way Fin Type Spider 45° (Left Side)



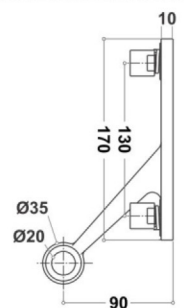
Specification
One Way Spider with fin to suit one panel wall assembly
Material : Stainless Steel 316 Grade
With gasket & Teflon washers to prevent glass from damage
Hold glass with the help of articulated/fix routels



SF-A7
One Way Fin Type Spider 45° (Left Side)



Specification
One Way Spider with fin to suit one panel wall assembly
Material : Stainless Steel 316 Grade
With gasket & Teflon washers to prevent glass from damage
Hold glass with the help of articulated/fix routels



Dimensions are subject to change. Please refer to actual product for hole preparation. Customized solutions can be provided according to the requirements of the project. (Spider, Fin / Splice Plates & Routels)



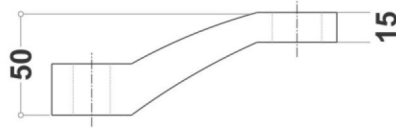
SPIDER FITTING

SPIDERS WITH OUT FIN

(SS 304)



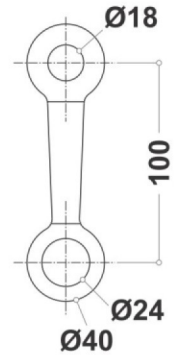
SF-B1
One Way Spider without Fin



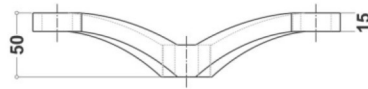
Specification
160 mm arm
One Way Spider without fin to hold the glass at one point
Material : Stainless Steel 304 Grade
Hold glass with the help of articulated/fix routel.
Designed to hold with fix structure



SF-B1 B
One Way Spider without Fin



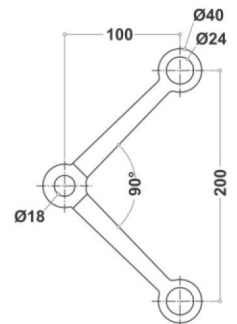
SF-B2 (90°)
Two Way Spider without Fin



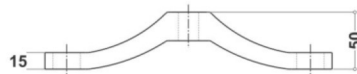
Specification
Two Way Spider without fin to hold two glass panels at 90° with fixed structure.
Material : Stainless Steel 304 Grade
Hold glass with the help of articulated/fix routels.
Designed to hold with fix structure



SF-B2 (90°) B
Two Way Spider without Fin



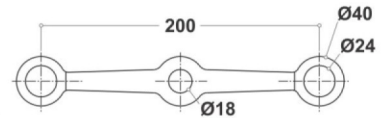
SF-B2 (180°)
Two Way Spider without Fin



Specification
220 mm arm
Two Way Spider without fin to hold two glass panels at 180° with fixed structure.
Material : Stainless Steel 304 Grade
Hold glass with the help of articulated/fix routels.
Designed to hold with fix structure



SF-B2 (180°) B
Two Way Spider without Fin



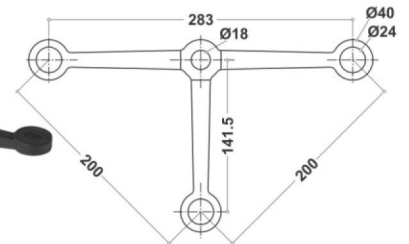
SF-B3
Three Way Spider without Fin



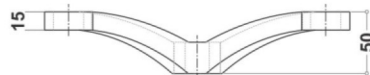
Specification
Three Way Spider without fin to hold three glass panels together with fixed structure
Material : Stainless Steel 304 Grade
Hold glass with the help of articulated/fix routels.
Designed to hold with fix structure



SF-B3 B
Three Way Spider without Fin



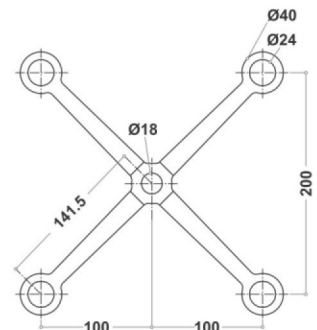
SF-B4
Four Way Spider without Fin



Specification
Four Way Spider without fin to hold four glass panel together with fixed structure
Material : Stainless Steel 304 Grade
Hold glass with the help of articulated/fix routel.
Designed to hold with fix structure



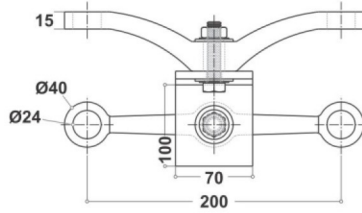
SF-B4 B
Four Way Spider without Fin



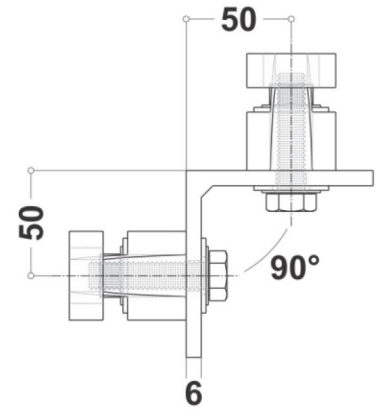
SPIDER FITTING



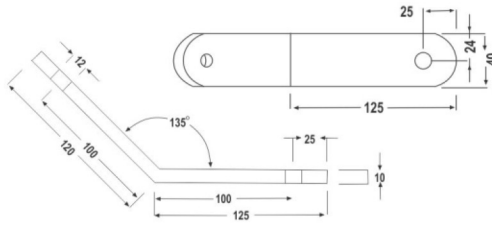
SF-B5
Four Way Point Type Spider 90°
Installed at 180°



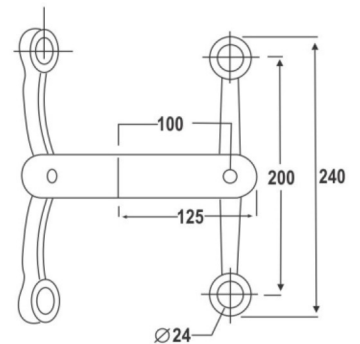
Specification
Four Way Spider without fin 90° to hold four glass panel together with fixed structure
Material : Stainless Steel 304 Grade
Hold glass with the help of articulated/fix routel
Designed to hold with fix structure



SF-B6
Four Way Point Type Spider 135°
Installed at 180°



Specification
Four Way Spider without fin 135° to hold four glass panel together with fixed structure
Material : Stainless Steel 304 Grade
Hold glass with the help of articulated/fix routel
Designed to hold with fix structure





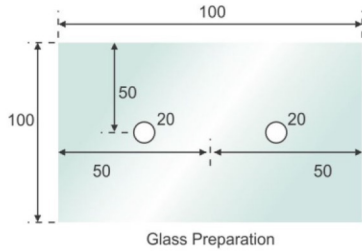
FIN PLATES

(SS 304)

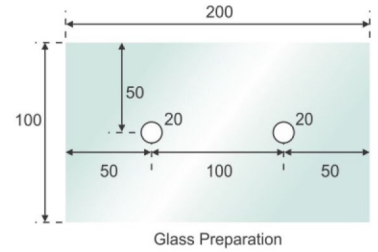
SPIDER FITTING



FP-01
Fin Plate 100mm



FP-02
Fin Plate 200mm



FP-01 B
Fin Plate 100mm

Specification
Two point holding of fin
Finish : Satin Stainless Steel (SSS)
Material : Stainless Steel 304 Grade
With teflon washers to prevent glass from damage

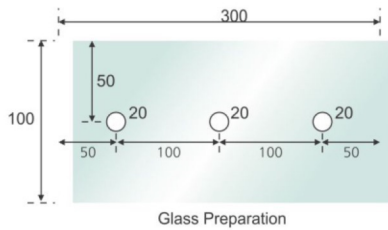


FP-02 B
Fin Plate 200mm

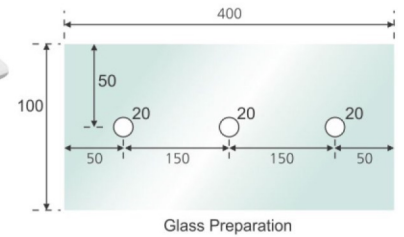
Specification
Two point holding of fin
Finish : Satin Stainless Steel (SSS)
Material : Stainless Steel 304 Grade
With teflon washers to prevent glass from damage



FP-03
Fin Plate 300mm



FP-04
Fin Plate 400mm



FP-03 B
Fin Plate 300mm

Specification
Three point holding of fin
Finish : Satin Stainless Steel (SSS)
Material : Stainless Steel 304 Grade
With teflon washers to prevent glass from damage



FP-04 B
Fin Plate 400mm

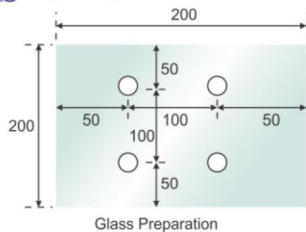
Specification
Three point holding of fin
Finish : Satin Stainless Steel (SSS)
Material : Stainless Steel 304 Grade
With teflon washers to prevent glass from damage

SPLICE PLATES

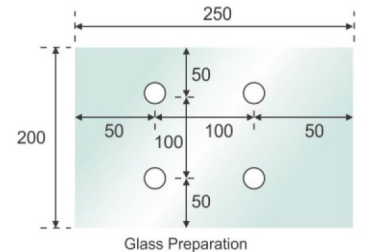
(SS 304)



SP-01
Splice Plate 200mm

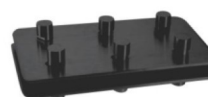


SP-02
Splice Plate 250mm



SP-01 B
Splice Plate 200mm

Specification
• Two point holding with each fin part
• Finish : Satin Stainless Steel (SSS)
• Material : Stainless Steel 304 Grade
• With teflon washers to prevent glass from damage

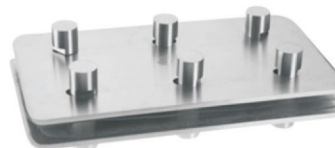
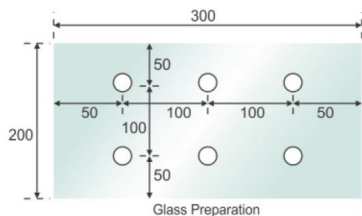


SP-02 B
Splice Plate 250mm

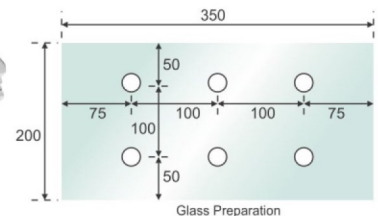
Specification
• Three point holding with each fin part
• Finish : Satin Stainless Steel (SSS)
• Material : Stainless Steel 304 Grade
• With teflon washers to prevent glass from damage



SP-03
Splice Plate 300mm

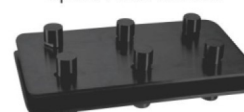


SP-04
Splice Plate 350mm



SP-03 B
Splice Plate 300mm

Specification
• Three point holding with each fin part
• Finish : Satin Stainless Steel (SSS)
• Material : Stainless Steel 304 Grade
• With teflon washers to prevent glass from damage



SP-04 B
Splice Plate 350mm

Specification
• Three point holding with each fin part
• Finish : Satin Stainless Steel (SSS)
• Material : Stainless Steel 304 Grade
• With teflon washers to prevent glass from damage

SPIDER FITTING



ARTICULATED ROUTELS

(SS 304)



SP-10
Articulated Routel

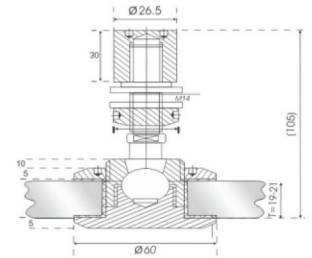


SP-10 B
Articulated Routel



Specification

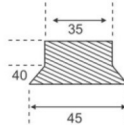
- Articulated flat head routel to be used along with spiders to hole glass
- Material : Stainless Steel 304 Grade
- With teflon washers to prevent glass from damage
- Adjustable upto 15mm glass thickness



SP-20
Articulated Routel
with Counter Sunk Hole

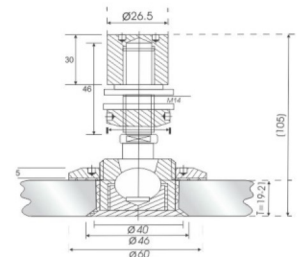


SP-20 B
Articulated Routel
with Counter Sunk Hole



Specification

- Articulated Cunter Sunk routel to be used along with spiders to hole glass
- Material : Stainless Steel 304 Grade
- With teflon washers to prevent glass from damage
- Adjustable upto 15mm glass thickness



SP-30
Fix Routel
(Flat Head)

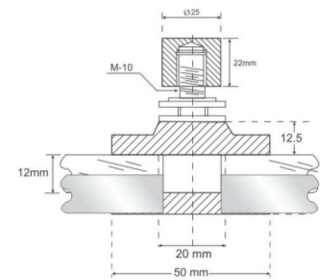


SP-30 B
Fix Routel
(Flat Head)



Specification

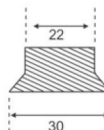
- Fixed flat head routel to be used along with spiders to hold glass
- Material : Stainless Steel 304 Grade
- With teflon washers to prevent glass from damage
- Adjustable to glass thickness
- Smaller in sizes



SP-40
Fix Routel
(Counter Sunk)

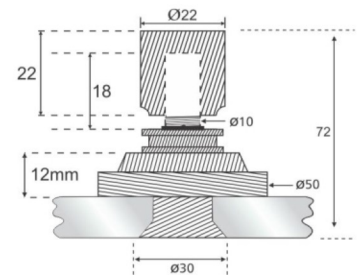


SP-40 B
Fix Routel
(Counter Sunk)



Specification

- Countersunk head routel to be used along with spiders to hold glass
- Material : Stainless Steel 304 Grade
- With teflon washers to prevent glass from damage



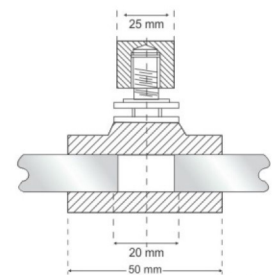
SP-60
Rigid Bolt
(Flat Head/Counter Sunk)



SP-60 B
Rigid Bolt
(Flat Head/Counter Sunk)

Specification

- Rigid Bolt to be used along with spiders to hole glass
- Material : Stainless Steel 304 Grade
- With teflon washers to prevent glass from damage
- Adjustable upto 15mm glass thickness



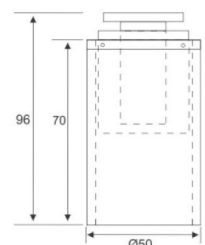
SP-50
Iron Assembly



SP-50 B
Iron Assembly

Specification

- Fixing bolt helps to hold without fin spiders with fix structure
- Material : Stainless Steel 304 Grade
- Adjustable height for accurate fixing of pider with flat head

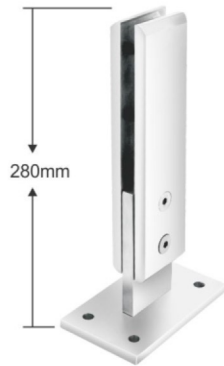




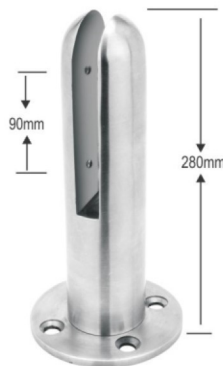
GLASS RAILING ACCESSORIES



RA-1
Spigot



RA-2
Spigot



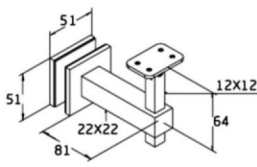
RA-3
Spigot



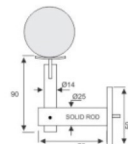
Specification
Solid Stainless Steel 304 Grade • Suitable for 10-15mm Glass
With Teflon Gasket to Prevent Glass From Damage
No needs to be grouted inside the Floor Level
No Holes required in the Glass • Also Can be used with accessories
Finish : SSS/ CP



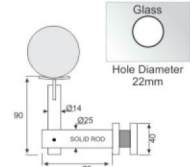
RA-4
Glass to Handrail



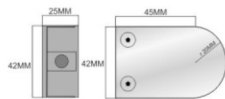
RA-5
Wall to Handrail



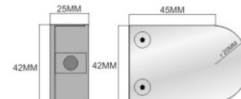
RA-6
Glass to Handrail
(Round)



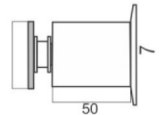
RA-7 (Flat Type)
U Shape Railing Connector



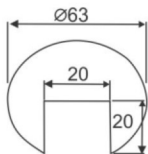
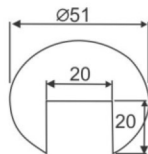
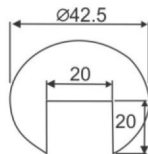
RA-8 (Curve Type)
U Shape Railing Connector



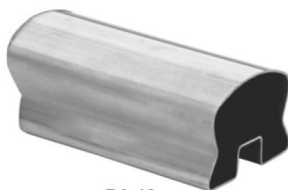
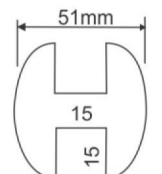
RA-9
Railing Stud &
Fastener



RA-10
Single Slotted Round Pipe
Available in 6mtr. Length



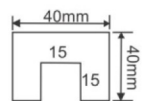
RA-11
Double Slotted Round Pipe
Available in 6mtr. Length



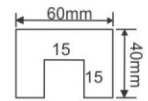
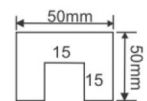
RA-12
Single Slotted Curve Pipe
Available in 6mtr. Length



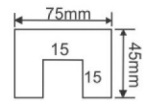
RA-13
Double Slotted Square Pipe
Available in 6mtr. Length



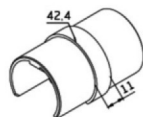
Square Groove Pipe



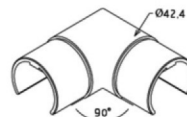
Rectangle Groove Pipe



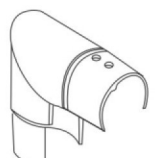
RA-14
Slotted Pipe Joints 180°



RA-15
Slotted Pipe Joints 90°

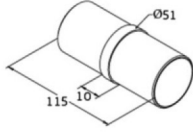


RA-16
Slotted Pipe
Joints L-Type 90°

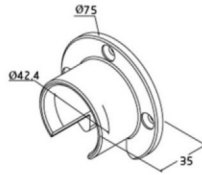




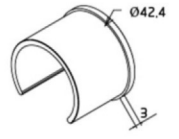
RA-17
Straight Jointer



RA-18
Wall to Slotted Pipe Jointer



RA-19
Slotted Pipe End Cap



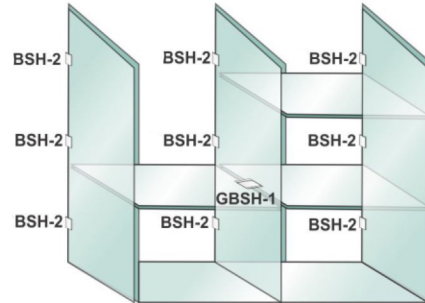
BRACKET SHELF HOLDERS



GBSH-01
Double Shelf Holder
(10-12mm)



GBSH-02
Single Shelf Holder
(10-12mm)



SUCTION CUP



SC-01
Glass Lifter with Single Cup



SC-02
Glass Lifter with Two Cup



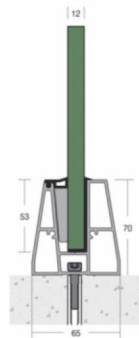
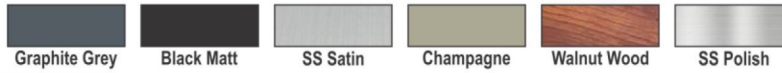
SC-03
Glass Lifter with Three Cup





ALUMINIUM GLASS RAILING

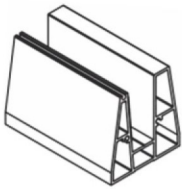
Available Colours :



AR-01
Aluminium Railing

This is an ideal solution Specially for Residence, Hotels and Public Area
Length 16 ft.
offering an impressive and functional result with no view limit.
Profile is Compatible for upto 3ft. Height of Glass

Advantages :
Economical with Good Aesthetic Design
Cleaning Convenience
Space Saving and Minimalist Design
Whether Proof
Maintenance Free
Can be Recycled
Space Saving and Economical



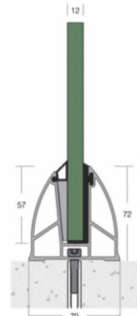
AR-01



AR-01 EC



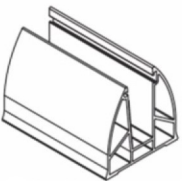
AR-01 EC Slotted



AR-02
Aluminium Railing

It is an ideal Indoor and Outdoor
The Sturdy Construction and High-Quality Material make this Railing perfect Investment for Owner
Corrosion Resistance and Light Weight
Length 16 ft.
Offering an impressive and functional result with no view limit.
Profile is Compatible for upto 3ft. Height of Glass

Advantages :
Architcural Aesthetic by Oval and Angled Rail Profile
Cleaning Convenience
Space Saving and Minimalist Design
Easy Installation Saves Workmanship and Time
Whether Proof
Maintenance Free
Can be Recycled



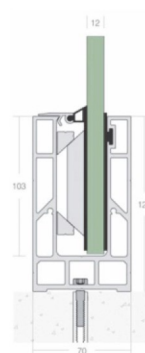
AR-01



AR-01 EC



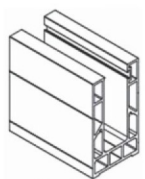
AR-01 EC Slotted



AR-03
Aluminium Railing

The Sturdy Railing that can be protect people from the Balcony or Staircase
Corrosion Resistance, Light Weight and Last for Long Time
Length 12 ft.
Offering an impressive and functional result with no view limit.
Profile is Compatible for upto 4ft. Height of Glass

Advantages :
Aluminium Cladding with SS Effect
Cleaning Convenience
Space Saving and Minimalist Design
Easy Glass Installation
Whether Proof
Maintenance Free
Can be Recycled



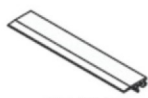
AR-03



AR-03 EC



AR-03 EC Slotted



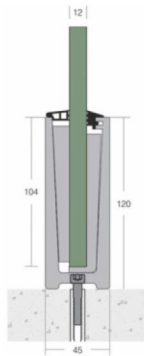
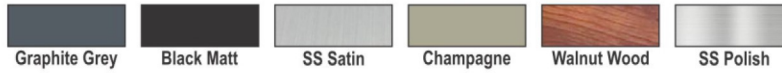
AR-03 SQ



ALUMINIUM GLASS RAILING



Available Colours :

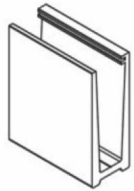


AR-04
Aluminium Railing

This is an ideal solution Specially for the Public Area This is made of Sturdy Aluminium and will be Beautiful Addition to any Porch Simple and Sleek Design useful for Commercial and Residential Application Length 12 ft. offering an impressive and functional result with no view limit. Profile is Compatible for upto 4ft. Height of Glass

Advantages :

- Suitable for Concrete Floor and Steel Construction
- Cleaning Convenience
- Slim Line, Elegant Design
- Whether Proof
- Low Maintenance
- Can be Recycled
- Space Saving and Economical



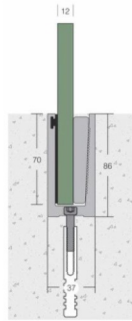
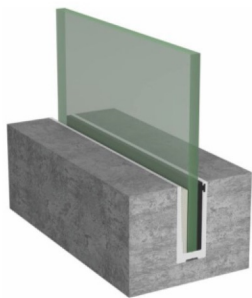
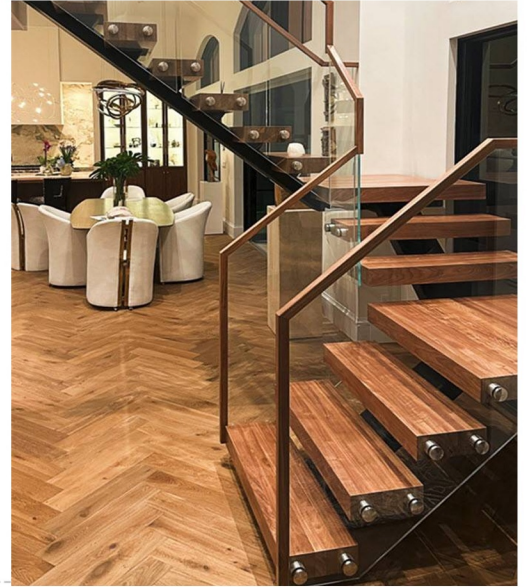
AR-04



AR-04 EC



AR-04 EC Slotted

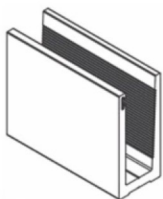


AR-05
Aluminium Railing

It is an ideal Indoor and Outdoor Built to be Both Elegant and Functional, and is Easy to Install Length 16 ft. Offering an impressive and functional result with no view limit. Profile is Compatible for upto 3.5ft. eight of Glass

Advantages :

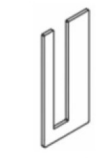
- High Structural Strength Provides Maximum Security
- Cleaning Convenience
- Top, Ceiling Concealed Mounting
- Whether Proof
- Maintenance and Rust Free
- Can be Recycled



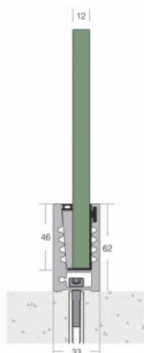
AR-05



AR-05 EC



AR-05 EC Slotted

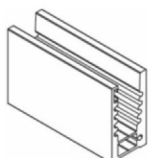


AR-06
Aluminium Railing

This is Light and Slim Aluminium Railing and Perfect Solution for Areas where Traditional Railing Can not Installed Simple and Sleek Design useful for Commercial, Residential and Hotels Etc. Length 16ft. offering an impressive and functional result with no view limit. Profile is Compatible for upto 3ft. Height of Glass

Advantages :

- Space Saving
- Cleaning Convenience
- Slim Line, Elegant Design & Whether Proof
- Economical and Low Maintenance
- Can be Recycled



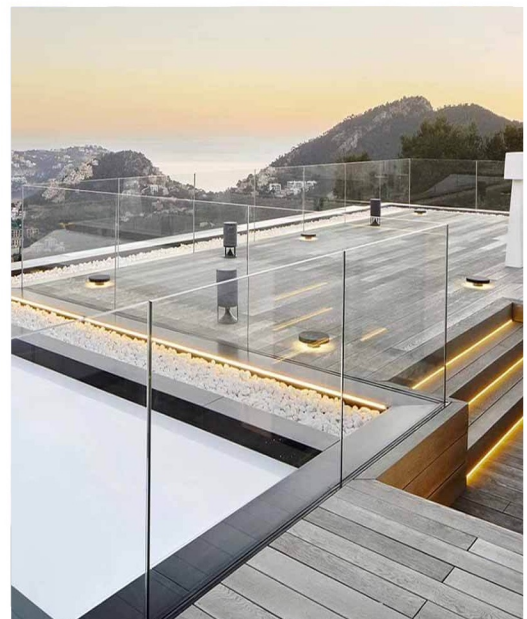
AR-06



AR-06 EC



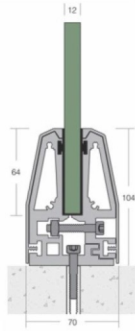
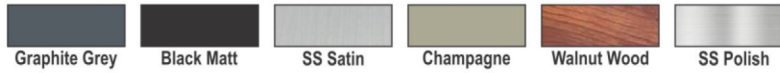
AR-06 EC Slotted





ALUMINIUM GLASS RAILING

Available Colours :



AR-07
Aluminium Railing

Slope Design for Perfect Aesthetic View
Can be used in Interior, Exterior and Public Area
Length 16 ft. with Bracket Cover
Suitable for Concrete Floor and Steel Construction
Profile is Compatible for upto 3ft. Height of Glass

Advantages :
Attractive Alternative to the Standard Metal Railing
Cleaning Convenience
Whether Proof
Maintenance Free
Can be Recycled



AR-07



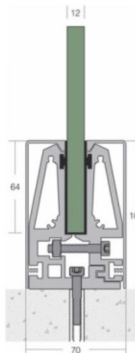
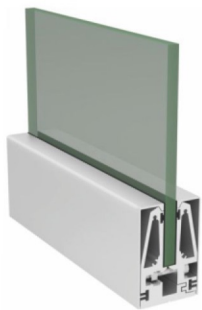
AR-07 CV



AR-07 EC



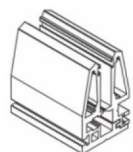
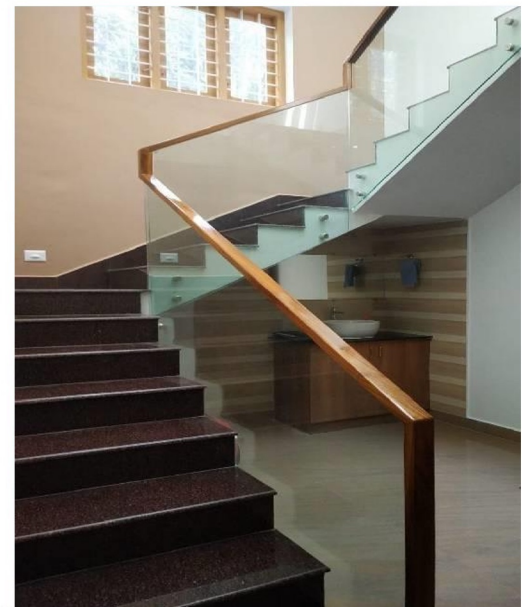
AR-07 EC Slotted



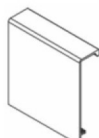
AR-08
Aluminium Railing

Square Cover Aluminium Railing is an Attractive and Sturdy Railing for deck or Patio
Premium Design
Can be used in Interior, Exterior Application
Length 16 ft. with Bracket Cover
Suitable for Concrete Floor and Steel Construction
Profile is Compatible for upto 3ft. Height of Glass

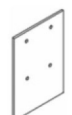
Advantages :
Attractive Alternative to the Standard Metal Railing
Cleaning Convenience
Whether Proof
Maintenance Free
Can be Recycled



AR-08



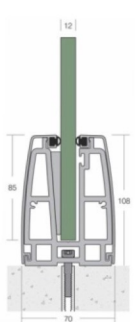
AR-08 CV



AR-08 EC



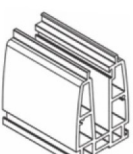
AR-08 EC Slotted



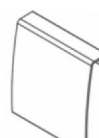
AR-09
Aluminium Railing

Strongest Architectural by Oval and Angled Design
High Structural Strength for Maximum Safety
Length 12 ft.
Offering an impressive and functional result with no view limit.
Profile is Compatible for upto 4ft. Height of Glass

Advantages :
Aluminium Cladding with SS Effect
Cleaning Convenience
Space Saving Design
Easy to Assemble and Installation
Whether Proof
Maintenance Free
Can be Recycled



AR-09



AR-09 CV



AR-09 EC

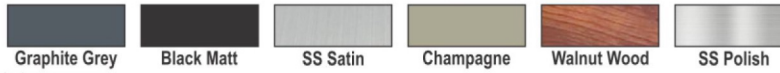


AR-09 EC Slotted

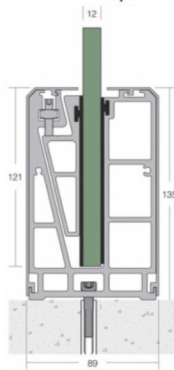
ALUMINIUM GLASS RAILING



Available Colours :



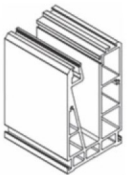
AR-10
Aluminium Railing



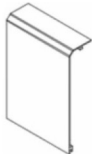
This is an ideal solution Specially for High Rise Buildings
This is made of Sturdy Aluminium and will be Beautiful Addition to any Porch
High Structural Strength Provides Maximum Safety
Length 16 ft.
Profile is Compatible for upto 4ft. Height of Glass

Advantages :

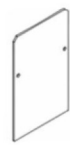
- Suitable for Frameless Railing
- Cleaning Convenience
- Whether Proof
- Low Maintenance
- Can be Recycled
- Unlimited View



AR-10



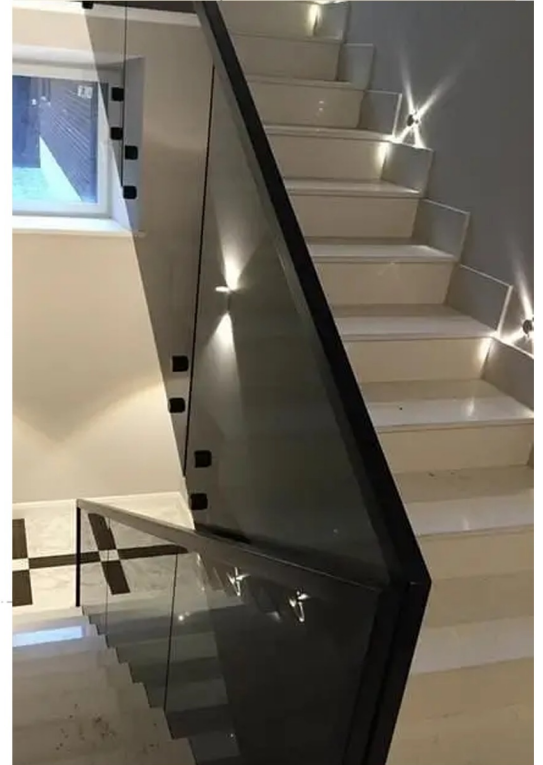
AR-10CV



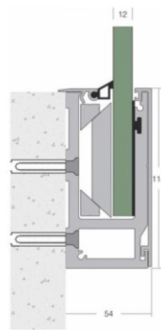
AR-10 EC



AR-08 10 Slotted



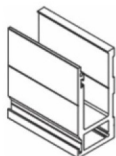
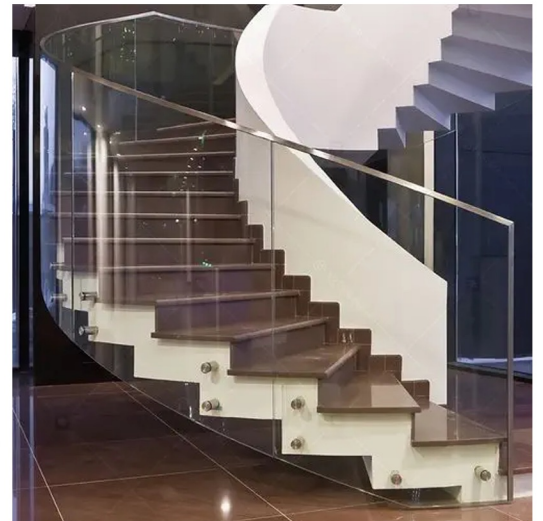
AR-11
Aluminium Railing



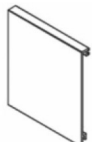
Slim Line, Elegant Design and Designed in a way that completely Looks Frameless
Space Saving Minimalist Design
Clear View from Areas Enclosed by Floor
Length 16 ft.
Profile is Compatible for upto 3ft. Height of Glass

Advantages :

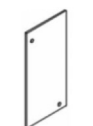
- High Structural Strength Provides Maximum Security
- Cleaning Convenience
- Whether Proof
- Maintenance and Rust Free
- Can be Recycled



AR-11



AR-11 CV



AR-11 EC



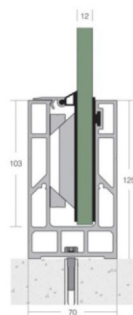
AR-11 EC Slotted



AR-11 SQ



AR-12
Aluminium Railing



Suitable for Balcony and Staircase
Perfect Aesthetic View
Length 70mm & 140mm.
Designed for Saving Time and Workmanship
Profile is Compatible for upto 4ft. Height of Glass

Advantages :

- Economical and Good Looking
- Cleaning Convenience
- Slim Line, Elegant Design & Whether Proof
- Easy Installation and Low Maintenance
- Can be Recycled



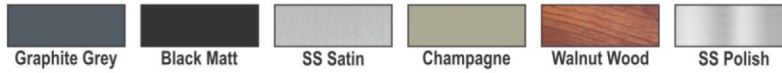
AR-12



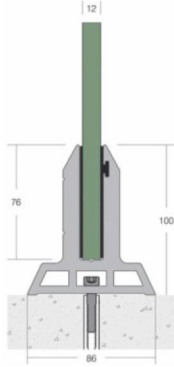


ALUMINIUM GLASS RAILING

Available Colours :



AR-13
Aluminium Railing



Suitable for Balcony, Staircase and Commercial Building
Space Saving Perfect Aesthetic View
Length 70mm.
Designed for Saving Time and Workmanship
Profile is Compatible for upto 4ft. Height of Glass

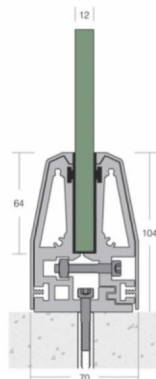
Advantages :
Economical and Good Looking
Cleaning Convenience
Slim Line, Elegant Design & Whether Proof
Easy Installation and Low Maintenance
Can be Recycled



AR-13



AR-14
Aluminium Railing



Suitable for Balcony, Staircase
A Slope Aluminium Glass Bracket is
Sleek and Modern Mounting Solution
for Attaching a Glass Panel to Surface
Space Saving Perfect Aesthetic View
Length 70mm & 140mm.
Designed for Saving Time and Workmanship
Profile is Compatible for upto 4ft. Height of Glass

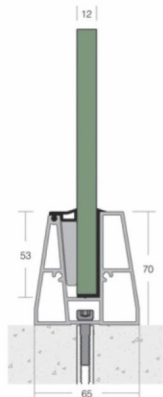
Advantages :
Economical and Good Looking
Cleaning Convenience
Slim Line, Elegant Design & Whether Proof
Easy Installation and Low Maintenance
Can be Recycled



AR-14

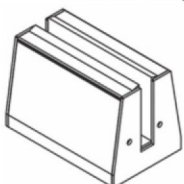


AR-15
Aluminium Railing

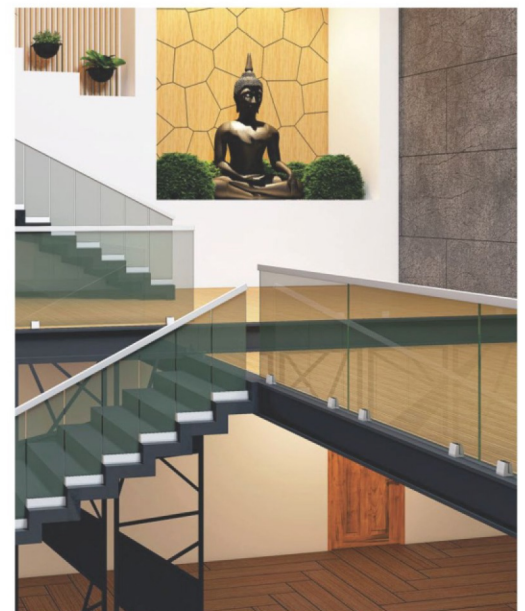


This Bracket is Crafted from High Quality
Aluminium & design it Light Weight and Strong
Suitable for Balcony, Staircase
Light Commercial and Residential Use
Length 70mm & 140mm.
Designed for Saving Time and Workmanship
Profile is Compatible for upto 3.5ft. Height of Glass

Advantages :
Economical and Good Looking
Cleaning Convenience
Slim Line, Elegant Design & Whether Proof
Easy Installation and Low Maintenance
Can be Recycled



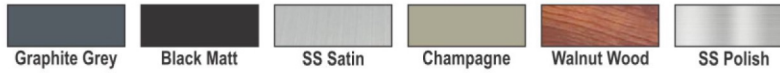
AR-15



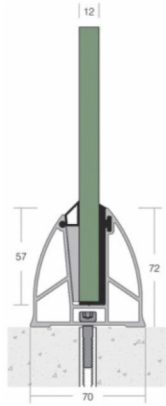
ALUMINIUM GLASS RAILING



Available Colours :

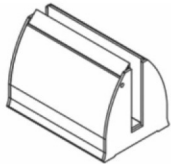


AR-16
Aluminium Railing

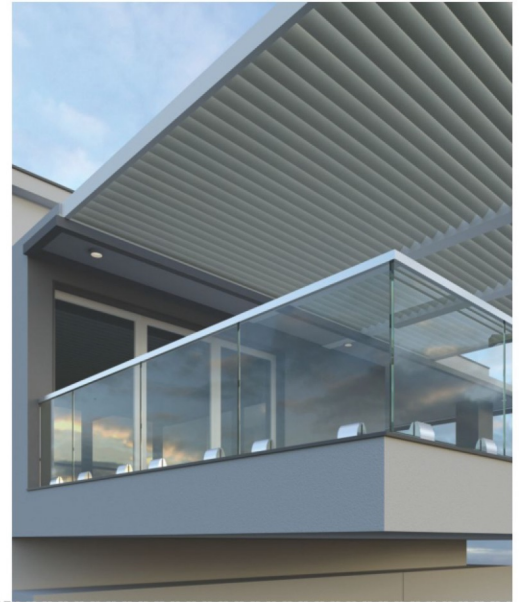
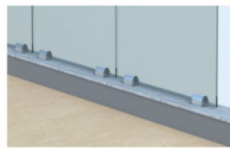


This Bracket is Crafted from High Quality Aluminium & design it Light Weight and Strong Suitable for Balcony, Porch Light Commercial and Residential Use Length 70mm &140mm. Designed for Saving Time and Workmanship Profile is Compatible for upto 3.5ft. Height of Glass

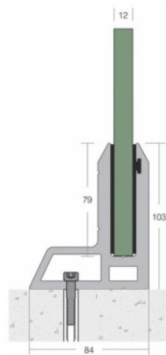
Advantages :
Economical and Good Looking
Cleaning Convenience
Slim Line, Elegant Design & Whether Proof
Easy Installation and Low Maintenance
Can be Recycled



AR-16

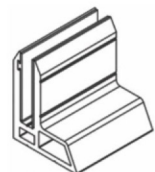


AR-17
Aluminium Railing



The "L" Shaped Bottom Glass Bracket is a Versatile and Stylish Bracket that can be used in many different Ways Length 70mm Designed for Saving Time and Workmanship Profile is Compatible for upto 4ft. Height of Glass

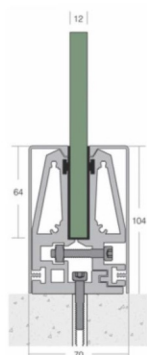
Advantages :
Economical and Good Looking
Cleaning Convenience
Slim Line, Elegant Design & Whether Proof
Easy Installation and Low Maintenance
Can be Recycled



AR-17

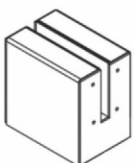


AR-18
Aluminium Railing



Suitable for Balcony and Staircase Perfect Aesthetic View Length 70mm &140mm. Designed for Saving Time and Workmanship Profile is Compatible for upto 4ft. Height of Glass

Advantages :
Economical and Good Looking
Cleaning Convenience
Slim Line, Elegant Design & Whether Proof
Easy Installation and Low Maintenance
Can be Recycled



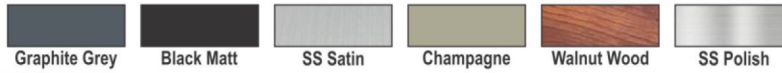
AR-18



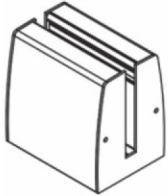


ALUMINIUM GLASS RAILING

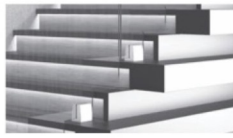
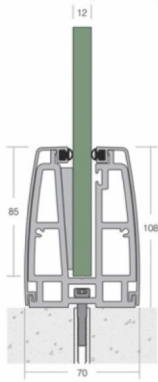
Available Colours :



AR-19
Aluminium Railing



AR-19



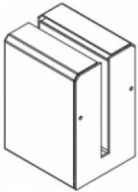
Suitable for Balcony and Staircase
Perfect Aesthetic View
Length 70mm & 140mm.
Designed for Saving Time and Workmanship
Profile is Compatible for upto 4ft. Height of Glass

Advantages :

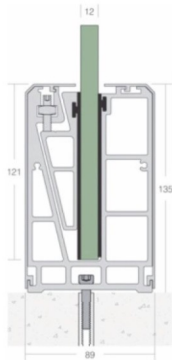
Economical and Good Looking
Cleaning Convenience
Slim Line, Elegant Design & Whether Proof
Easy Installation and Low Maintenance
Can be Recycled



AR-20
Aluminium Railing



AR-20



Easy to Install Glass, Ultra Slender and Base
Bottom Bracket System Allow you to create
Balcony Railing with Endless View
Suitable for Balcony and Staircase
Perfect Aesthetic View
Length 70mm & 140mm.
Designed for Saving Time and Workmanship
Profile is Compatible for upto 5ft. Height of Glass

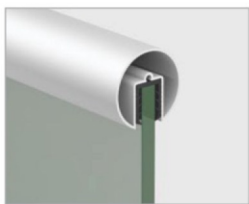
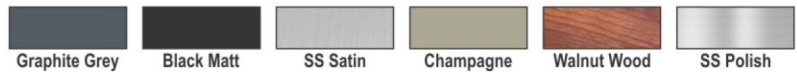
Advantages :

Economical and Good Looking
Cleaning Convenience
Slim Line, Elegant Design & Whether Proof
Easy Installation and Low Maintenance
Can be Recycled



HANDRAIL ACCESSORIES

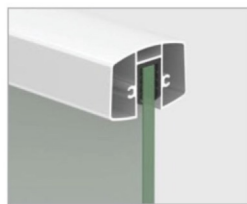
Available Colours :



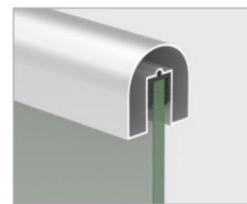
HR-01 (50mm)
Round Hand Rail



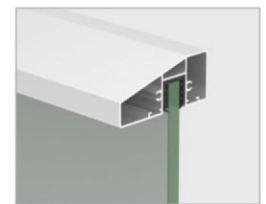
HR-02 (50x50mm)
Square Hand Rail



HR-03 (65x45mm)
Rectangle Hand Rail



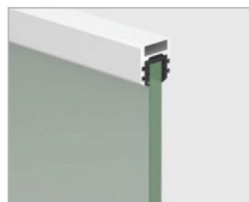
HR-04 (55x55mm)
"U" Tube Hand Rail



HR-05 (80x35mm)
Incline Hand Rail



HR-06 (40x40mm)
Square Hand Rail



HR-07 (25x25mm)
Slim Line Hand Rail



HR-08 (65x40mm)
Club Hand Rail

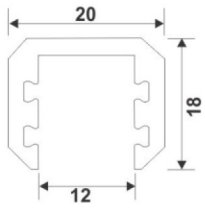


HR-09 (70x35mm)
LED Hand Rail

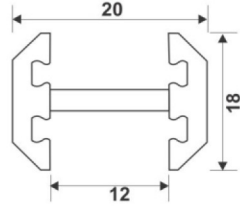


HR-10 (25x75mm)
Rectangle Hand Rail

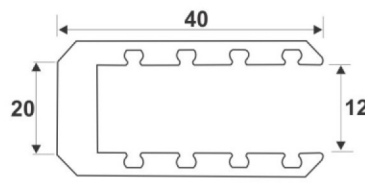
GLASS PARTITION PROFILE



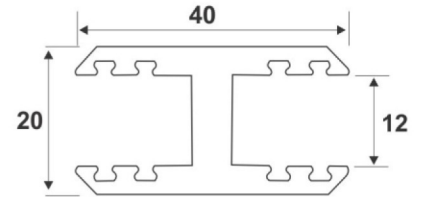
GEP-01
For Glass Door



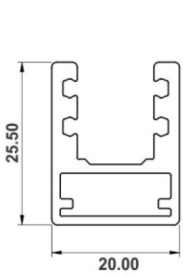
GEP-02
For Glass Door Partion



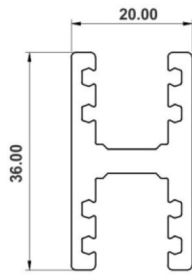
GEP-03
For Glass Door



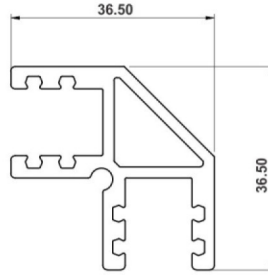
GEP-04
For Glass Door Partion



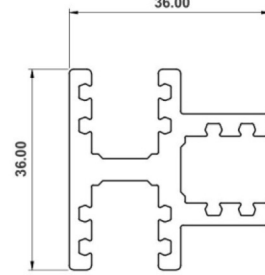
GEP-05



GEP-06



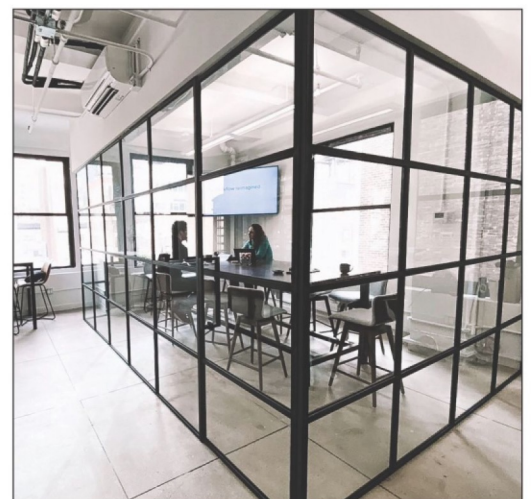
GEP-07



GEP-08

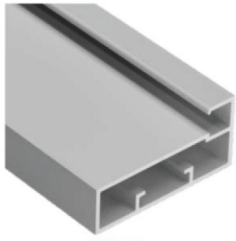
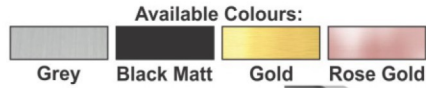


GEP-09

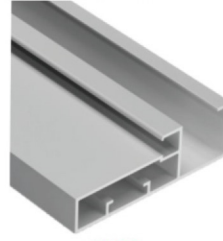
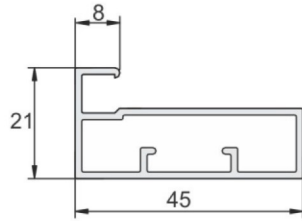




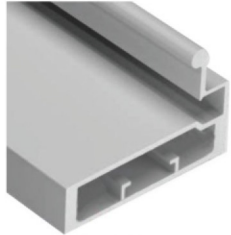
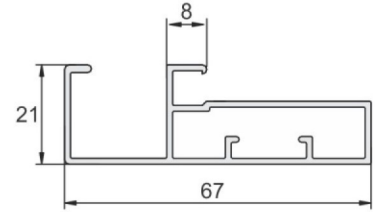
ALUMINIUM KITCHEN PROFILES



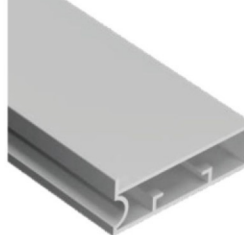
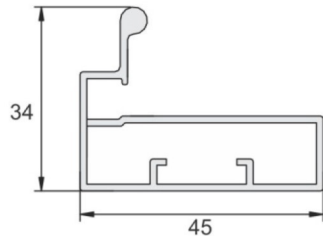
L-45
45mm Profile



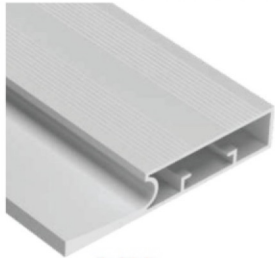
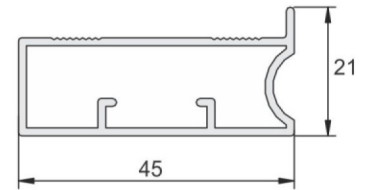
L-68
67mm Profile



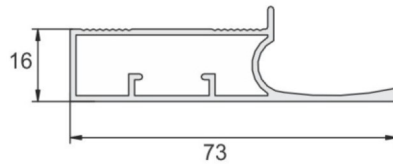
L-45 H
45mm Top Handle Profile



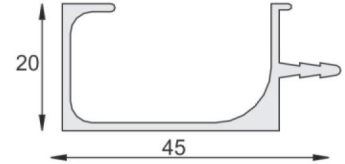
L-03 A
Glass Stick Profile 4mm



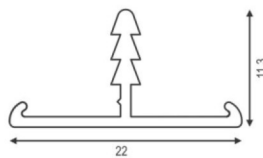
L-04 A
Glass Stick Profile 4mm



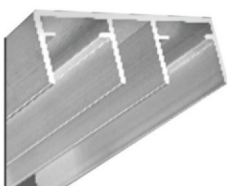
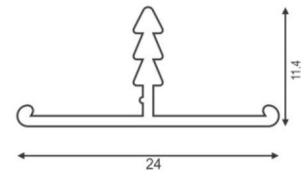
L-35
G Handle Profile



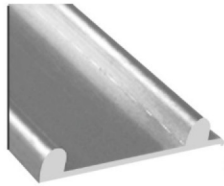
AP-04
'T' Edge Profile 22mm



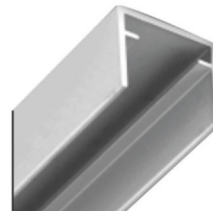
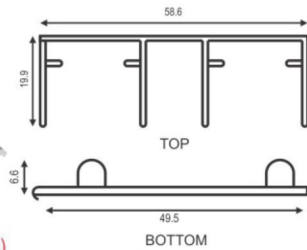
AP-05
'T' Edge Profile 24mm



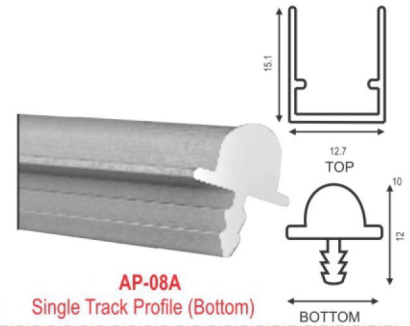
AP-07
Double Track Profile (Top)



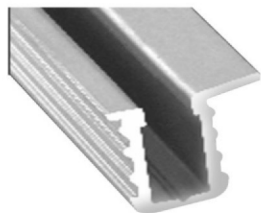
AP-07A
Double Track Profile (Bottom)



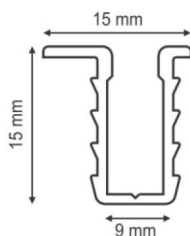
AP-08
Single Track Profile (Top)



AP-08A
Single Track Profile (Bottom)



AP-09
Slideline - 56 Profile



Profile Connector with
Two Screw Hole
Set of 4 Pcs.



Profile Connector with
Four Screw Hole
Set of 4 Pcs.

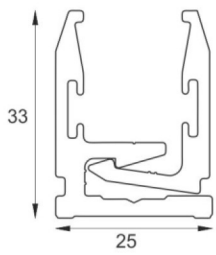


Shutter Profile Connector
50mm

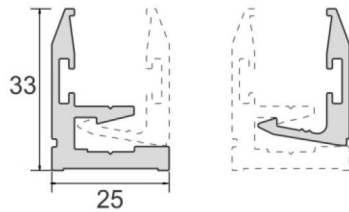
GLAZING PROFILE & SLIDING TRACK



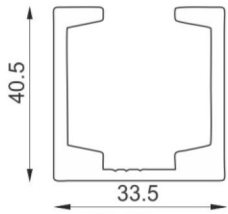
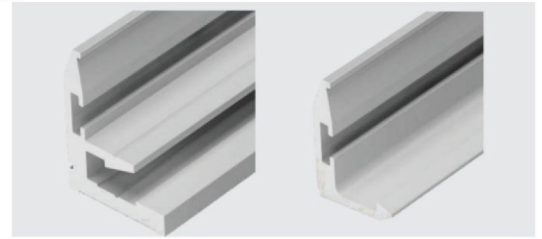
Available Colours:



L-12
Glazing Profile



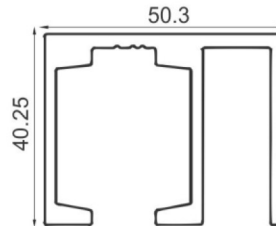
Available Finish : Aluminium, Matt Black



SL-128
Single Door Sliding Track



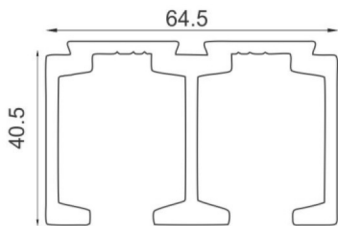
Available Finish : Aluminium Matt



SL-13
Single Door Sliding Track (1 Fix + 1 Sliding)



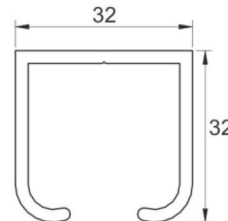
Available Finish : Aluminium Matt



SL-14
Double Door Sliding Track



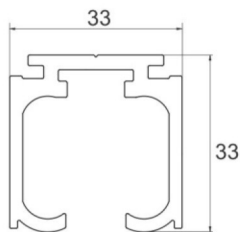
Available Finish : Aluminium Matt



L-07
Sliding Track



Available Finish : Aluminium Matt



L-08
Sliding Track (For Soft Close Door)



Available Finish : Aluminium Matt





AV INDUSTRIES

CONTACT US

ADDRESS

Plot no 25, Nexus Industrial
Complex, Dabua Pali Road,
NIT Faridabad

CONTACT NUMBER

+91 9891164671

EMAIL

princegtc@gmail.com

WEBSITE

www.avindustries.in